



## Eglinton, 50 Luminous Crescent

### Modern Family Living in Allara Estate



Built in 2016 and set on a 375sqm block, this beautifully presented home offers modern comfort and energy efficiency with a 5kW solar panel system. Ideally positioned opposite the Allara walkway and parklands, and just a short stroll to the Kinkuna Water Playground, it's perfect for families seeking both convenience and lifestyle.

The home features a spacious master bedroom with a walk-in robe and ensuite, plus three additional bedrooms with built-in robes. A versatile theatre room can serve as a fifth bedroom or additional living space. The heart of the home is the stylish open-plan family and meals area, complemented by a well-appointed kitchen with Caesarstone benchtops, and a walk-in pantry and dishwasher.

Additional highlights include a double lock-up garage with rear access, a security alarm system, split-system air conditioning in the main living area, timber laminate flooring throughout, and a study nook off the kitchen.

**For Sale**  
Please Call

**View**  
[ljhooker.com.au/JW7HRD](http://ljhooker.com.au/JW7HRD)

**Contact**  
**Marco Viljoen**  
0468747725  
[marco.viljoen@ljhooker.com.au](mailto:marco.viljoen@ljhooker.com.au)

**Ian Knight**  
0413 447 016  
[ian.knight@ljhooker.com.au](mailto:ian.knight@ljhooker.com.au)



**LJ Hooker Joondalup**  
**(08) 9300 2100**

**Disclaimer:** All information contained therein is gathered from relevant third parties sources. We cannot guarantee or give any warranty about the information provided. Interested parties must rely solely on their own enquiries.

The outdoor space boasts an alfresco area, newly laid lawn, a sandpit, a fire pit area, and a water softener and filter system-all within a fully enclosed yard with netting, making it ideal for relaxation, entertaining, and perfect for cat or bird owners seeking a secure outdoor space.

This is a fantastic opportunity to secure a modern, low-maintenance home in a sought-after location. Contact us today for more details or to arrange a viewing!

## More About this Property

<b>Property ID</b>	JW7HRD
<b>Property Type</b>	House
<b>House Size</b>	154 m2
<b>Land Area</b>	375 m2

### Marco Viljoen 0468747725

Sales Consultant | [marco.viljoen@ljhooker.com.au](mailto:marco.viljoen@ljhooker.com.au)

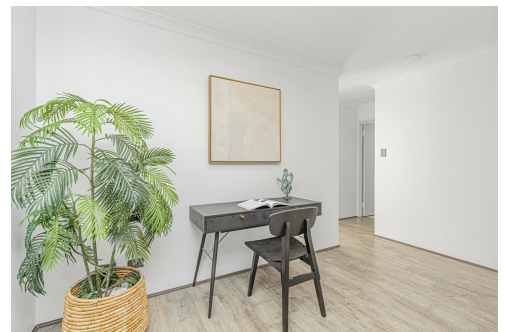
### Ian Knight 0413 447 016

Residential Sales Specialist | [ian.knight@ljhooker.com.au](mailto:ian.knight@ljhooker.com.au)

### LJ Hooker Joondalup (08) 9300 2100

4/25 Delage Street, JOONDALUP WA 6027

[joondalup.ljhooker.com.au](http://joondalup.ljhooker.com.au) | [admin.joondalup@ljhooker.com.au](mailto:admin.joondalup@ljhooker.com.au)





## 50 Luminous Crescent, Eglinton

For information and guidance purpose only / measurements shown are approximate



**LJ Hooker Joondalup**  
**(08) 9300 2100**

**Disclaimer:** All information contained therein is gathered from relevant third parties sources. We cannot guarantee or give any warranty about the information provided. Interested parties must rely solely on their own enquiries.