



15 Lorikeet Approach, Eglinton

PERFECT PLACE TO CALL HOME


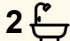
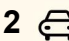
MOTIVATORS SELLERS!!

Modern build, near new, neutral and ready to go!

- bedroom, 2-bathroom, double secure garage, plus Home Theatre, plus Study area, plus Scullery. Contemporary and modern colour scheme throughout this home, easy to add your creative flair. The three minor bedrooms are to the front of the home with central area for either a study or home office, a home theatre and master suite with spacious walk-in robe and ensuite is to the rear of the property. The hub of the home works well with the kitchen overlooking the living and dining, very spacious and modern kitchen with scullery and walk in pantry, quality appliances and stone tops. The dining area takes you out through sliding doors to the alfresco for entertaining and the gardens are laid to lawn. Extras to this home include —high ceilings, ducted reverse cycle air conditioning, led downlights, built in 2024, 450sqm block, 177sq of living.

Location is perfect with all the new development happening in the area, including the Eglinton Shopping Centre, plenty of beautifully landscaped parks, schools, coastal restaurants/cafes, public transport & Eglinton train station and the Alkimos Aquatic Centre

All information contained therein is gathered from relevant third parties sources. We cannot guarantee or give any warranty about the information provided. Interested parties must rely solely on their own enquiries.

4  2  2 

FOR SALE

Offers from \$899k

VIEW

By Appointment

AGENTS

Chrys Timpson
0424 839 055
chrys.timpson@ljhpxp.com.au

AGENCY

LJ Hooker City Residential
(08) 9325 0700



(completion expected late 2026) all adding to this thriving community!

CALL CHRYS TIMPSON YOUR LOCAL SPECIALIST FOR MORE
DETAILS ON 0424839055
// DISCLAIMER THESE PHOTOGRAPHS ARE NOT RECENT AND
ARE FOR ILLUSTRATIVE PURPOSES ONLY //

MORE DETAILS

Property ID	3VJFFGJ
Property Type	House
House Size	177 m2
Land Area	450 m2
Including	Ensuite Air Conditioning Toilets (2) Outdoor Entertaining Remote Garage Theatre Room ducted air con stone tops high ceilings activity area

Chrys Timpson 0424 839 055

Sales Executive | chrys.timpson@ljhpxp.com.au

LJ Hooker City Residential (08) 9325 0700

Shop 30, 82 Royal Street, EAST PERTH WA 6004
cityresperth.ljhooker.com.au | hello@ljhpxp.com.au



Floor Plan

Design:

Prague

4 2 2

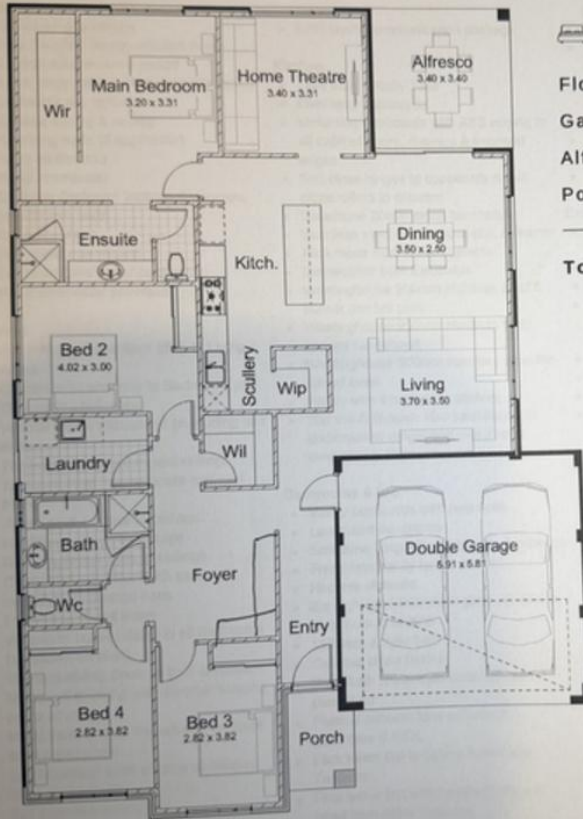
Floor Area: 177.28m²

Garage: 36.18m²

Alfresco: 11.56m²

Porch: 3.44m²

Total Area: 228.47m²



Disclaimer: Images for illustrative purposes only. Furniture is not included. Fencing and landscaping are included. Actual plans will accompany the build contract. Package is correct at time of publication.