



48 Woodlock Drive, Edmonton

Immaculate & Move-In Ready - Space for Your Boat or Caravan

First time offered to the market; this spacious family home offers excellent functionality in a sought-after pocket of Edmonton and is ready to move in and enjoy. Positioned on a quiet, tree-lined street, this residence delivers comfort, practicality, and plenty of room for the whole family.

Thoughtfully designed, the heart of the home centres around the modern chef's kitchen with quality appliances and a walk-in pantry, flowing to the open plan living and dining area. Large sliding doors connect seamlessly to the oversized undercover patio featuring privacy blinds - creating a fantastic space for entertaining or relaxing all year round.

A dedicated study area provides added flexibility for working from home or extra space for the kids.

The fully fenced backyard offers ample room for children and pets, with space to add a pool if desired.

Four generous bedrooms with built-in wardrobes, the master suite is positioned separately from the remaining bedrooms and features a

4 🏠 2 🚗 3 🚘

FOR SALE

Please Call

AGENTS

Kayla Pennefather
0429 364 945
kaylap@ljheh.com.au

AGENCY

LJ Hooker Cairns Edge Hill
(07) 4053 9999

All information contained therein is gathered from relevant third parties sources.
We cannot guarantee or give any warranty about the information provided.
Interested parties must rely solely on their own enquiries.

 **LJ Hooker**

walk-in robe and private ensuite.

For those needing extra parking, the property includes side access with a remote-controlled gate to a concrete slab suitable for a boat or caravan. The garage is designed to accommodate a standard vehicle and a longer vehicle, or up to three smaller cars.

Additional features include:

- Security screens and split system air-conditioning throughout
- Remote garage with internal access
- 620sqm level block
- 6kw Solar electricity and Genset switch
- Solar roof ventilation system
- Internal laundry
- Walk in linen cupboard
- Automated irrigation system
- Established fruiting lemon tree

Located just moments from Sugarworld Parklands, Sugarworld Adventure Park and Sugarworld Shopping Centre and only minutes to local schools, sporting facilities, and essential services, this home offers convenience with strong appeal for families and investors.

The southern corridor of Cairns is growing rapidly and buyer demand in this area remains high, this is an opportunity not to overlook. Do not miss your chance to secure a quality home in a sought-after location.

For more information or to arrange your private viewing contact Kayla Pennefather on 0429 364 945.

MORE DETAILS

Property ID	3XYCFMB
Property Type	House
House Size	250 m ²
Land Area Including	620 m ²
	Ensuite
	Air Conditioning
	Dishwasher
	Outdoor Entertaining
	Built-in-Robes
	Secure Parking
	Remote Garage
	Solar Panels

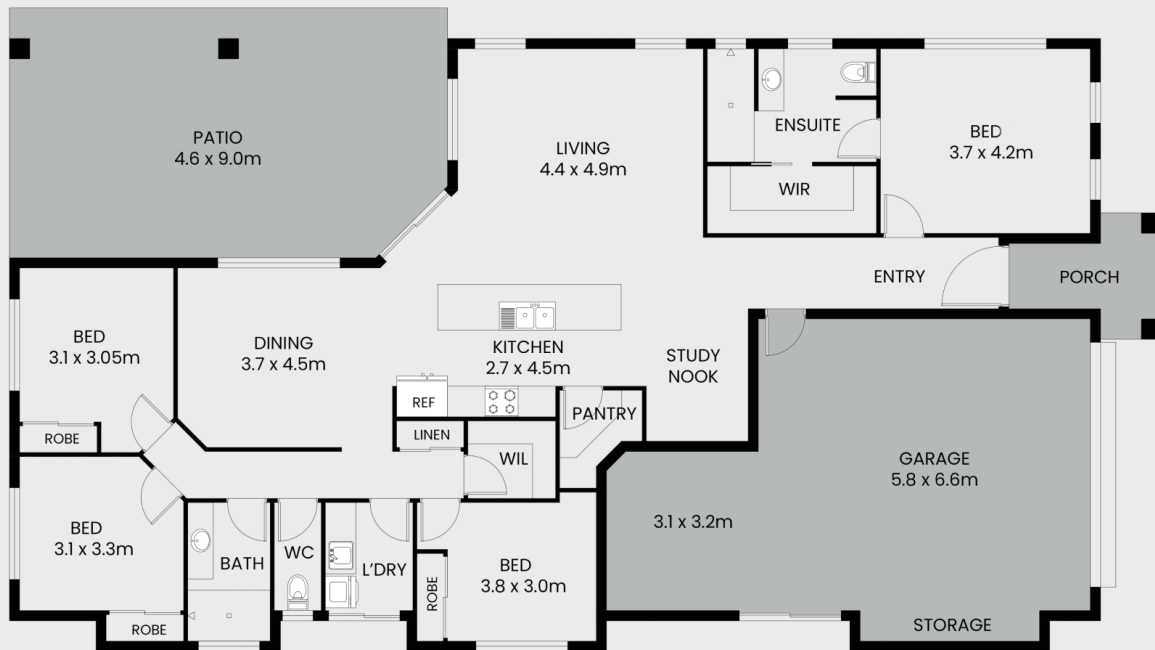
Kayla Pennefather 0429 364 945
Sales Consultant | kaylap@ljheh.com.au

LJ Hooker Cairns Edge Hill (07) 4053 9999
81 - 83 Woodward Street, EDGE HILL QLD 4870
cairnsedgehill.ljhooker.com.au | cairnsedgehill@ljheh.com.au



48 Woodlock Drive

Edmonton



This floor plan including furniture, fixture measurements and dimensions are approximate and for illustrative purposes only. BoxBrownie.com gives no guarantee, warranty or representation as to the accuracy and layout. All enquiries must be directed to the agent, vendor or party representing this floor plan.

