


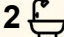

103 Dardanelles Road, Edmondson Park

## Easy-Care Living in a Convenient Location

This modern and well-appointed home offers comfortable family living with a practical layout and quality finishes throughout. Designed for easy living and entertaining, this property is perfect for families or savvy investors seeking a low-maintenance opportunity.

- Four generous bedrooms, master with ensuite and walk-in robe
- Built-in robes to all additional bedrooms
- Open-plan kitchen with gas cooking
- Light-filled living and dining area
- Covered alfresco area, perfect for entertaining
- Ducted air conditioning for year-round comfort

Located in the growing suburb of Edmondson Park, close to local schools, parks, shops, and transport, this home offers a convenient and family-friendly lifestyle.

4  2  1 

**FOR SALE**  
\$1,190,000

**VIEW**  
By Appointment

**AGENTS**  
Alen Toma  
0405 157 651  
[atoma.casula@ljhooker.com.au](mailto:atoma.casula@ljhooker.com.au)

**AGENCY**  
LJ Hooker Casula  
(02) 9601 8333

All information contained therein is gathered from relevant third parties sources. We cannot guarantee or give any warranty about the information provided. Interested parties must rely solely on their own enquiries.

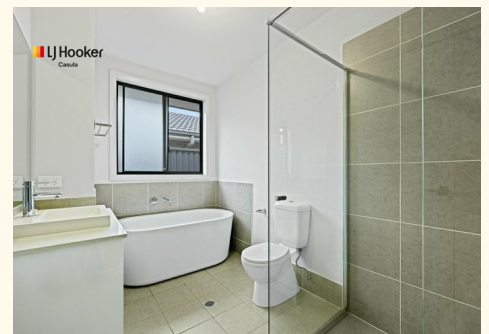
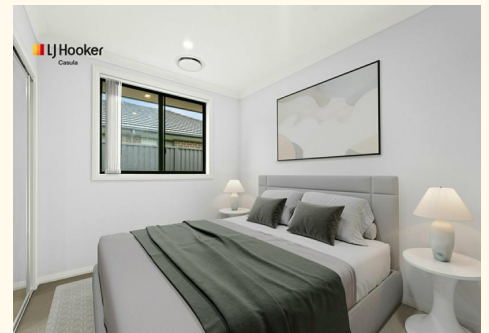
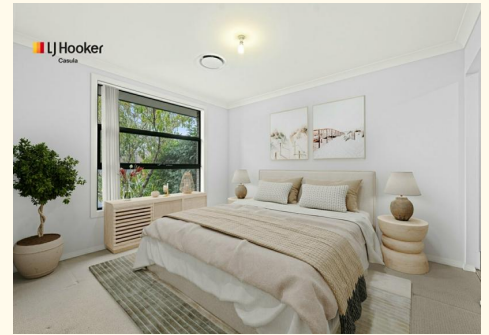
 **LJ Hooker**

## MORE DETAILS

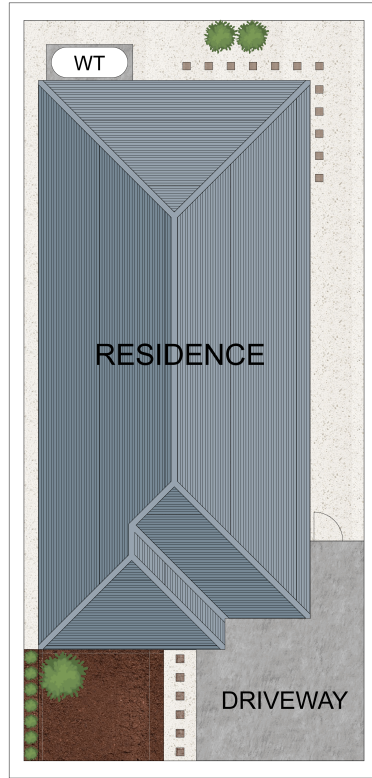
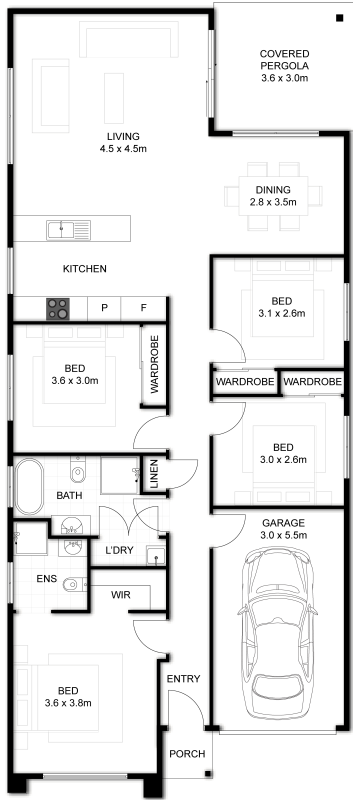
Property ID ZYHGRH  
Property Type House  
Land Area 300 m2  
Including Ensuite  
Air Conditioning  
Toilets (2)  
Outdoor Entertaining  
Built-in-Robes  
Secure Parking  
Fully Fenced  
Remote Garage  
Water Tank

**Alen Toma 0405 157 651**  
Principal | [atoma.casula@ljhooker.com.au](mailto:atoma.casula@ljhooker.com.au)

**LJ Hooker Casula (02) 9601 8333**  
62 Marsh Parade, CASULA NSW 2170  
[casula.ljhooker.com.au](http://casula.ljhooker.com.au) | [casula@ljhooker.com.au](mailto:casula@ljhooker.com.au)



All information contained therein is gathered from relevant third parties sources.  
We cannot guarantee or give any warranty about the information provided.  
Interested parties must rely solely on their own enquiries.



SITE PLAN



103 Dardanelles Road, Edmondson Park

Disclaimer: This floor plan is used for marketing purposes only and is subject to errors and inaccuracy. The marketing Agent & Maraj Media will not accept any liability. Interested parties should make and rely on their own enquiries.

