

Unit 2/120 Passendale Road, Edmondson Park

1 1 1

Modern Ground-Floor Living in the Heart of Edmondson Park

Located in the rapidly developing suburb of Edmondson Park walking distance away from shopping centers, schools and Train station. This brand-new-ground floor 1-bedroom, 1-bathroom apartment delivers modern comfort, stylish finishes and everyday convenience. With a thoughtful layout and plenty of natural lighting, this impressive residence presents the perfect opportunity for first-home buyers, downsizers, and smart investors alike.

Property Features:

- Modern open plan living and dining area with easy-care tiled flooring
- Sleek contemporary kitchen with stone benchtops and quality appliances
- Generous size bedroom with built-in wardrobe
- Modern bathroom with premium finishes
- Hidden laundry space for a clean, streamlined look
- Strong rental appeal with excellent investment potential

Location Highlights:

Walking distance from Edmondson Park Train station, Ed Square Shopping center, Edmondson Park Public School, and the popular Ed Tavern, this home offers modern living with every convenience at your

FOR SALE
Contact Agent

AGENTS

Dejan Gajic
0404 225 083
dejan.leppington@ljhooker.com.au

Anthony Bucca
0418 972 882
abucca.leppington@ljhooker.com.au

AGENCY

LJ Hooker Leppington | Austral
(02) 9606 4311

All information contained therein is gathered from relevant third parties sources.
We cannot guarantee or give any warranty about the information provided.
Interested parties must rely solely on their own enquiries.

LJ Hooker

doorstep. With multiple bus stops nearby, easy access to major motorways, and close proximity to local parks and community facilities, this location provides exceptional connectivity and lifestyle appeal.

- Virtual furniture used for illustration purposes. Actual property may differ.

Disclaimer: The above information has been furnished to LJ Hooker Leppington | Austral by the vendor/vendors legal representative. We have not verified whether or not that information is accurate, and do not have any belief one way or the other in its accuracy. LJ Hooker Leppington | Austral do not accept any responsibility to any person for its accuracy and do no more than pass it on. All interested parties should make and rely upon their own enquiries in order to determine whether or not this information is, in fact, accurate.

MORE DETAILS

Property ID	122YHCV
Property Type	Apartment
Including	Toilets (1)

Dejan Gajic 0404 225 083

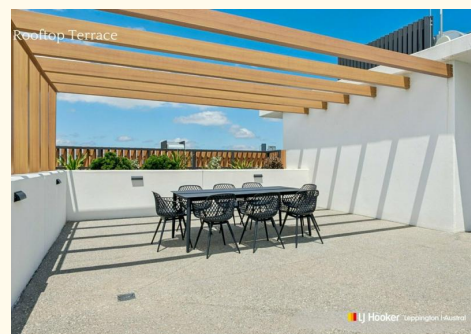
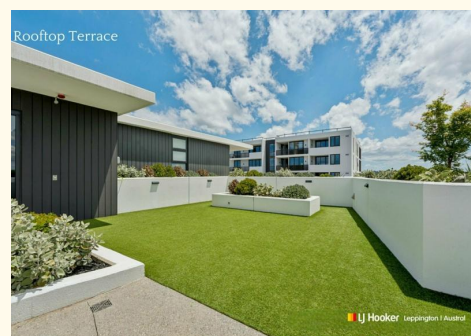
Licensed Sales Agent | dejan.leppington@ljhooker.com.au

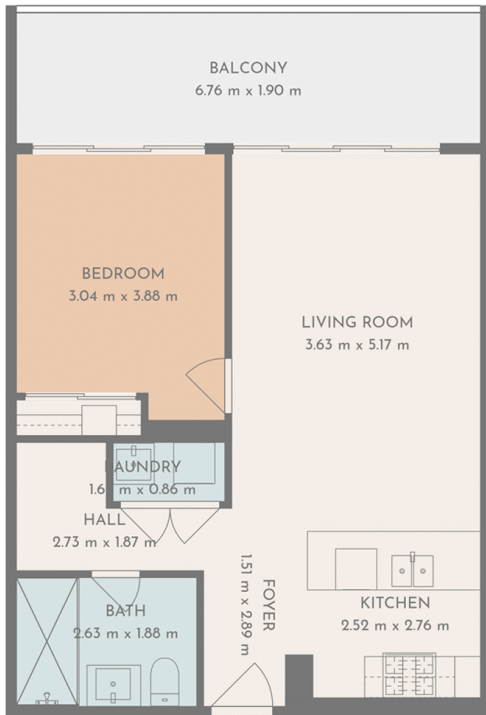
Anthony Bucca 0418 972 882

Sales Manager | abucca.leppington@ljhooker.com.au

LJ Hooker Leppington | Austral (02) 9606 4311

Leppington Village Shopping Centre, Shop GC1, 108-116 Ingleburn Road, LEPPINGTON NSW 2179
leppington.ljhooker.com.au | leppington@ljhooker.com.au





2/120 PASSENDALE ROAD, EDMONDSON PARK

Floor plans are approximate and for illustrative purposes only. While we do not doubt the accuracy of the floor plans, we make no guarantee, warranty, or representation as to their accuracy or completeness.