



Edithvale, 45/61 Hughes Avenue

sales postponed until further confirmation Charming Beachside Retreat in the Heart of Edithvale!

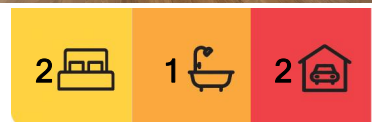
Welcome to 45/61 Hughes Avenue, Edithvale, where comfort meets convenience! Perfectly positioned in a sought-after neighborhood, this spacious and thoughtfully designed home offers a lifestyle of relaxation and practicality.

Key Features:

- * 2 Generous Bedrooms: Main bedroom with walk-in robe (WIR) and the second bedroom featuring a built-in robe (ROBE).
- * Open-Plan Living & Dining: Bright and expansive living area (6.4m x 4.8m) flowing into the dining space, perfect for entertaining or unwinding.
- * Modern Kitchen: Stylish and functional, complete with ample storage and a convenient layout.
- * Central Bathroom: Well-appointed with a separate WC for added privacy.
- * Laundry: Practical layout with easy access.



Disclaimer: All information contained therein is gathered from relevant third parties sources. We cannot guarantee or give any warranty about the information provided. Interested parties must rely solely on their own enquiries.



For Sale

For Sale: \$730,000-\$770,000

View

By Appointment

Contact

Yannie Hou

0416 868 512

yhou.rowville@ljhooker.com.au

LJ Hooker City Residential
(03) 9600 2166

* Prime Location: Close to Edithvale beach, cafes, schools, and public transport —enjoy the ultimate coastal lifestyle!

This home is ideal for first-home buyers, downsizers, or investors looking for a low-maintenance property in a vibrant, community-oriented area.

Don't miss this incredible opportunity! Contact us today to arrange a private inspection or attend our scheduled open homes.

Let me know if you'd like to adjust the tone or add specific selling points!

More About this Property

Property ID	NH6HC2
Property Type	Unit

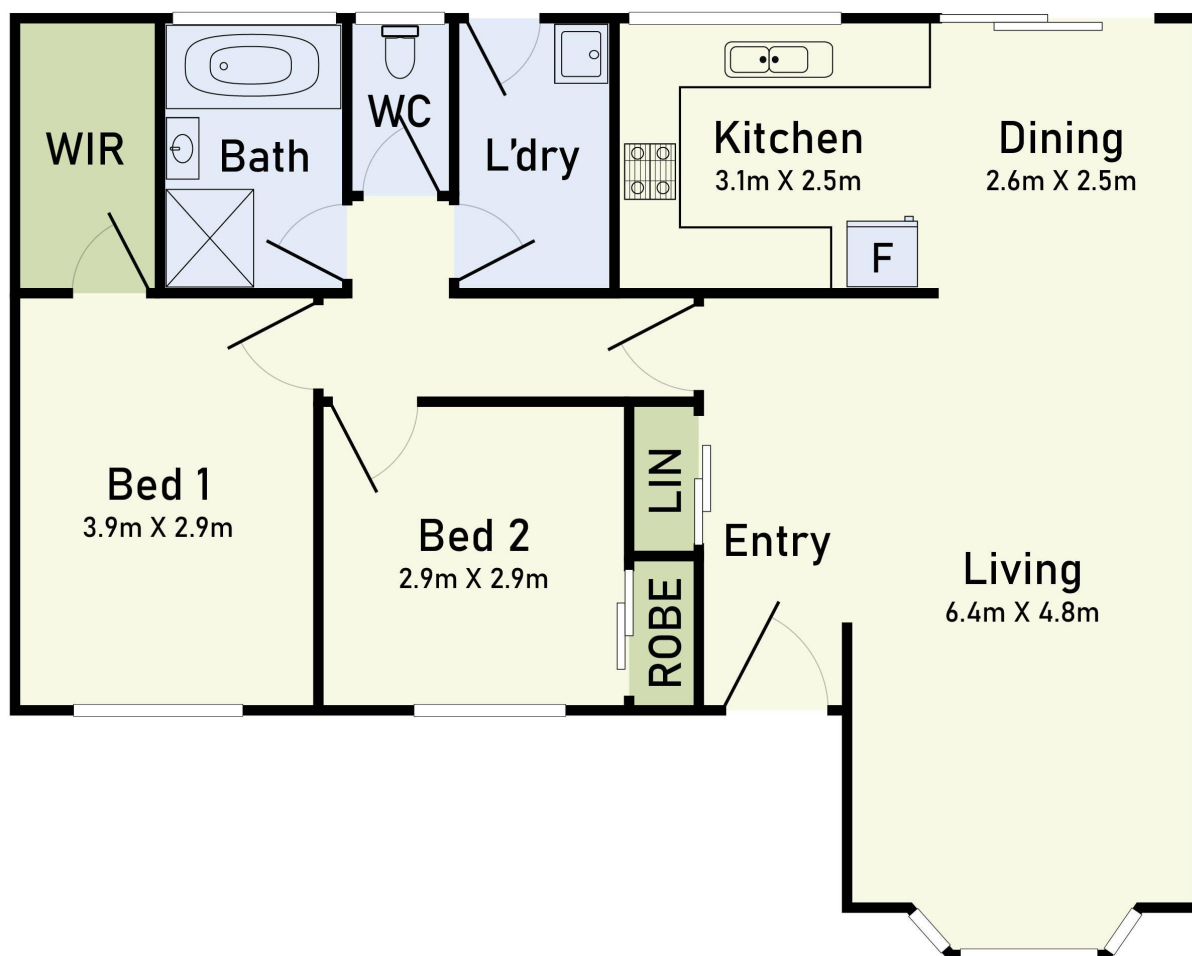
Yannie Hou 0416 868 512
Senior Property Consultant | yhou.rowville@ljhooker.com.au

LJ Hooker City Residential (03) 9600 2166
Upper Ground Floor, 439-445 Lonsdale St, MELBOURNE VIC 3000
cityresmelbourne.ljhooker.com.au | cityresmelbourne@ljhooker.com.au



Disclaimer: All information contained therein is gathered from relevant third parties sources. We cannot guarantee or give any warranty about the information provided. Interested parties must rely solely on their own enquiries.

LJ Hooker City Residential
(03) 9600 2166



45/61 Hughes Avenue, Edithvale

* Dimensions are approximate and for illustrative purposes only

