
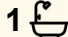





1/43 Allambie Road, Edensor Park

3  1  1 

Low-Maintenance Living with Everyday Convenience

Positioned in a quiet and well-maintained complex, this beautifully presented 3 bedroom townhouse delivers comfort, convenience, and space in one of the most desirable pockets. Located only approximately 500m to Edensor Park Plaza.

Boasting a generous open-plan layout, this home features a light-filled living and dining area, a neat and tidy kitchen with ample storage, and three well appointed bedrooms all with built-in wardrobes. Enjoy outdoor entertaining in your private, low-maintenance courtyard, and take advantage of internal access from the secure lock-up garage. Whether you're a young family, first-home buyer, or savvy investor, this property ticks all the boxes will be sold, don't miss out.

Approximate Quarterly Outgoings

Strata \$680.00

Water \$355.00

Council \$297.00

DISCLAIMER: We have in preparing this information used our best endeavours to ensure that the information contained therein is true and accurate however, accept no responsibility and disclaim all liability in respect of any errors, inaccuracies or misstatements

FOR SALE
\$949,000

AGENTS

Amelle Ghassibe
0424 754 232
aghasibe@ljhfairfield.com.au

Reneh Hanna
0420 980 183
rhanna@ljhfairfield.com.au

AGENCY

LJ Hooker Fairfield
(02) 9727 7766

All information contained therein is gathered from relevant third parties sources. We cannot guarantee or give any warranty about the information provided. Interested parties must rely solely on their own enquiries.

 **LJ Hooker**

contained herein. Prospective buyers should make their own enquiries to verify the information contained herein

MORE DETAILS

Property ID 146QF99
Property Type House
Land Area 225 m2

Amelle Ghassibe 0424 754 232

Residential Sales | aghasibe@ljhfairfield.com.au

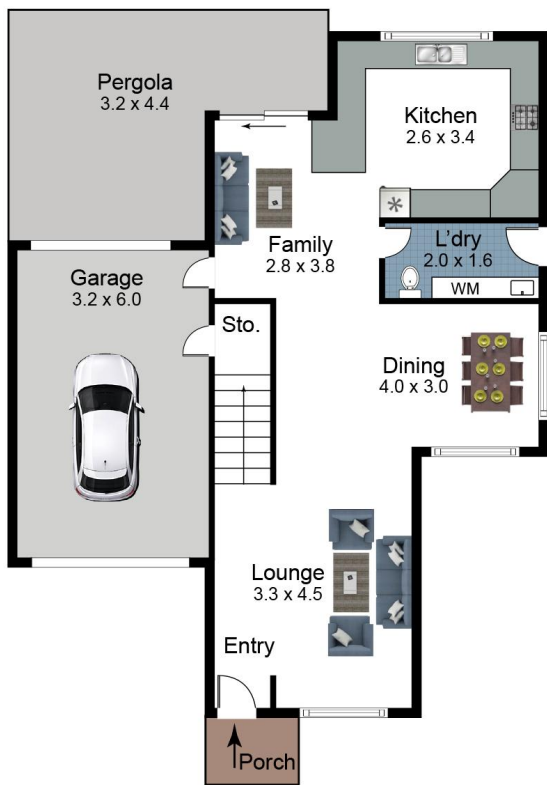
Reneh Hanna 0420 980 183

Residential Sales | rhanna@ljhfairfield.com.au

LJ Hooker Fairfield (02) 9727 7766

195b The Boulevard, FAIRFIELD HEIGHTS NSW 2165
fairfield.ljhooker.com.au | fairfield@ljhfairfield.com.au

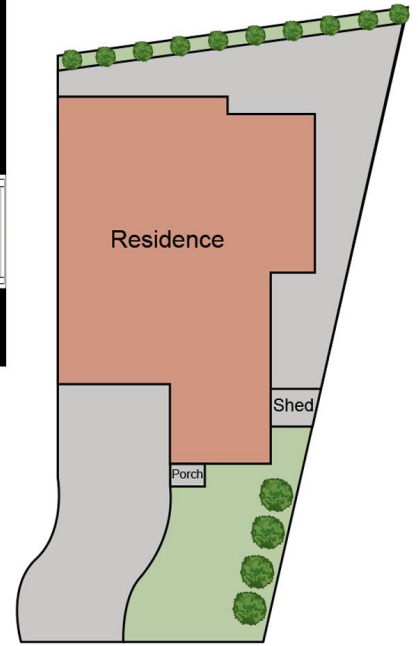




Ground Floor



First Floor



Site Plan

**1/43 Allambie Road
Edensor Park 2176**

Scales in metres. Indicative only. Dimensions are approximate. All information contained here in is gathered from sources we believe to be reliable. However we cannot guarantee its accuracy and interested persons should rely on their own enquiries.

