



Edens Landing, 85 Overland Drive

Elevated Living on a Spacious 704 sqm Block - Perfect for Families, Investors, and Lifestyle Seekers!

Nestled in the thriving, sought-after suburb of Edens Landing, this impeccable 3-bedroom residence is a rare gem that demands attention. Perched on an elevated, flood-proof block, this home offers breathtaking appeal for owner-occupiers and savvy investors alike. Positioned in a prestigious pocket just minutes from everything you need, this is a property you'll want to move fast for - so clear your schedule and don't miss the inspection!

Why You'll Fall in Love:

- * Master Retreat: Spacious bedroom with built-in robes, a smart ceiling fan, air conditioning, and a private ensuite - your personal oasis awaits.
- * Two Additional Bedrooms: Generously sized with built-ins, perfect for kids, guests, or a home office.
- * Year-Round Comfort: Fully insulated to keep you cool in summer and cozy in winter, plus dual split-system air conditioning (lounge and master).

LJ Hooker

Disclaimer: All information contained therein is gathered from relevant third parties sources. We cannot guarantee or give any warranty about the information provided. Interested parties must rely solely on their own enquiries.

3  2  1 

For Sale
CONTACT AGENT

View
ljhooker.com.au/435TGTJ

Contact
Robbie Dunn
0404 466 793
rdunn@ljhgc.com.au

LJ Hooker Coomera
(07) 5585 7888

- * Chef's Kitchen: Abundant cabinetry and prep space for culinary enthusiasts.
- * Modern & Move-In Ready: Sleek tiling in living areas paired with fresh carpet in bedrooms.
- * Outdoor Haven: Massive, secure rear yard with two fenced areas - ideal for kids, pets, or both! Plus, ample parking for your trailer, boat, jet skis, or caravan.
- * Convenient Parking: Single lock-up garage with internal and external access.
- * Prime Location: Just 1.5km to Edens Landing Train Station for fast trips to Brisbane or the Gold Coast. See the new Holmview Central Shopping Centre from your elevated backyard - Woolworths, a medical centre, and 20+ specialty stores are practically at your doorstep!
- * Looking for an investment: Rental appraisal of \$550 - \$580 a week

Lifestyle & Location Perfected:

Edens Landing sits perfectly halfway between Brisbane and the Gold Coast, with the M1 just 7 minutes away - zip south to the beaches or north to the city in under 30 minutes. Craving adventure? Nearby boat ramps offer direct river access to Moreton Bay, making weekends on the water a breeze. Facing northeast, this home captures beautiful natural light and breezes all year round.

Don't Wait - This One Won't Last!

Opportunities like this in Edens Landing's fast-growing community are rare. Whether you're seeking a forever home or a high-return investment, 85 Overland Drive ticks every box. Call now to secure your inspection - trust us, you'll want to see this one in person!

Disclaimer: While every care has been taken to ensure accuracy, LJ Hooker Coomera and its agents are not liable for any errors or omissions. All details are believed correct as of 10th of March 2025

More About this Property

| | |
|----------------------|---------------------------------------------------------------------------------------|
| Property ID | 435TGTJ |
| Property Type | House |
| House Size | 130 m2 |
| Land Area | 704 m2 |
| Including | Air Conditioning Courtyard Dishwasher Outdoor Entertaining Built-in-Robes |

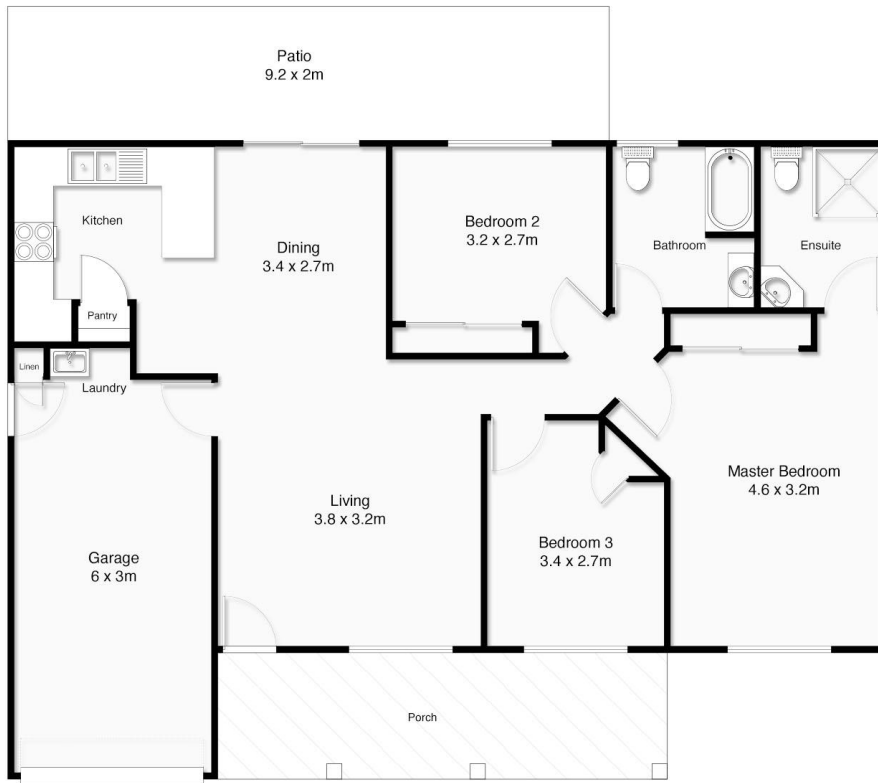
Robbie Dunn 0404 466 793
Sales Specialist | L.R.E.A | rdunn@ljhgc.com.au

LJ Hooker Coomera (07) 5585 7888
The Hub, 5/90 Days Road, UPPER COOMERA QLD 4209
coomera.ljhooker.com.au | coomera@ljhgc.com.au



LJ Hooker Coomera
(07) 5585 7888

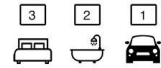
Disclaimer: All information contained therein is gathered from relevant third parties sources. We cannot guarantee or give any warranty about the information provided. Interested parties must rely solely on their own enquiries.



Total approximate floor area: 130m²

LJ Hooker
Solutions Gold Coast

85 Overland Drive, Edens Landing



While every attempt has been made to ensure the accuracy of the floor plan contained here, measurements of doors, windows, rooms and any other items are approximate and no responsibility is taken for error, omission or misstatement. This plan is for illustrative purposes only and should only be used as a guide for any prospective purchaser.

LJ Hooker

LJ Hooker Coomera
(07) 5585 7888

Disclaimer: All information contained therein is gathered from relevant third parties sources. We cannot guarantee or give any warranty about the information provided. Interested parties must rely solely on their own enquiries.