

Edens Landing, 17 Holliday Drive

Spacious & Comfortable Living in Quiet Family Pocket!

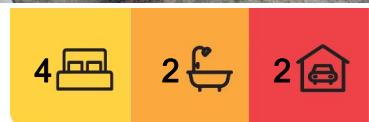
Located in a peaceful, community-friendly street, 17 Holliday Drive, Edens Landing is a well-maintained 4-bedroom, 2-bathroom lowset brick & tile home that offers the ideal layout for growing families or investors. With high ceilings, multiple living zones, air-conditioning & a fully fenced backyard, this home blends functionality with everyday comfort on a generous 672m2 block.

Just some of what's on offer:

- * Solid lowset brick & tile home - designed for easy-care living
- * 4 generously sized bedrooms - all with built-in robes & ceiling fans
- * Master bedroom features a large walk-through robe & private ensuite - your own quiet retreat
- * Massive main bathroom - complete with a full-size bath, separate shower & loads of space to make busy mornings a breeze
- * Two separate living areas - perfect for flexible family living or work-from-home space



Disclaimer: All information contained therein is gathered from relevant third parties sources. We cannot guarantee or give any warranty about the information provided. Interested parties must rely solely on their own enquiries.



For Sale
Please Call

View
ljhooker.com.au/1WQBGRF

Contact
Trina Wilson
0427 188 500
trina.wilson@ljhbeenleigh.com.au
Brianna Dobbie
0459 966 749
ea1@ljhbeenleigh.com.au

LJ Hooker Beenleigh
(07) 3807 7900

- * Open-plan kitchen with brand-new cooktop - complete with stainless steel appliances, dishwasher & great bench space
- * Soaring high ceilings - light-filled interiors that feel bright & open
- * Carpeted in the main living room, hallway & bedrooms - soft underfoot for relaxed comfort
- * Tiled flooring in the kitchen, dining, 2nd living area & laundry - ideal for easy care in high-traffic zones
- * Air-conditioning in the main living zone - keeping things cool year-round
- * Internal laundry with external access - practical & tucked away for everyday ease
- * Beautifully landscaped surrounds - from the pretty hedges out front to leafy trees, it's all been done for you
- * Fully insulated throughout - energy efficiency & comfort in every season
- * Double remote lock-up garage - with internal access & extra room for a boat or trailer
- * Fully fenced backyard - secure for pets & children to enjoy safely
- * Currently tenanted until October at \$600/week - rental appraisal at \$640-\$680/week

Location Perks - Central, Convenient & Connected:

- * 700m to Edens Landing State School - no need for the school run rush
- * 8-minute walk to Edens Landing Train Station - ideal for commuters
- * Close to local shopping hubs - Woolworths, Aldi, Bunnings & more just minutes away
- * Easy access to parks, bus routes & walking tracks - a great lifestyle for families
- * Under 10 minutes to the M1 - commute with ease to Brisbane or the Gold Coast
- * Surrounded by quality schools - Trinity College, Canterbury College, Beenleigh State High & more

A fantastic opportunity for families looking for space, or investors seeking a reliable, low-maintenance asset in a well-connected pocket. 17 Holliday Drive offers the best of comfort, practicality & location.

Act fast - add the open home to your calendar & view before it's gone!

More About this Property

Property ID	1WQBGRF
Property Type	House
Land Area	672 m2
Including	Air Conditioning Dishwasher Outdoor Entertaining Built-in-Robes Secure Parking Fully Fenced Remote Garage

Trina Wilson 0427 188 500

Sales Manager & Co-Owner | trina.wilson@ljhbeenleigh.com.au

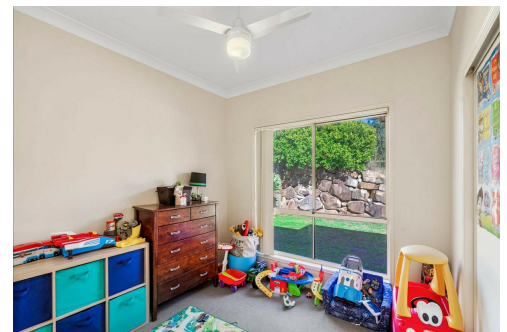
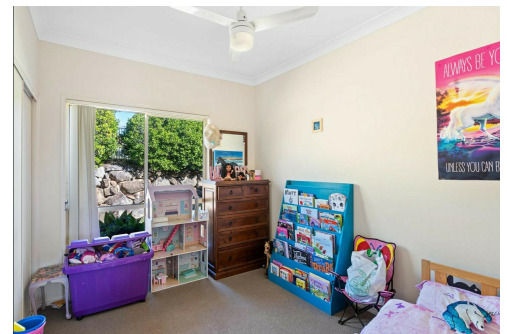
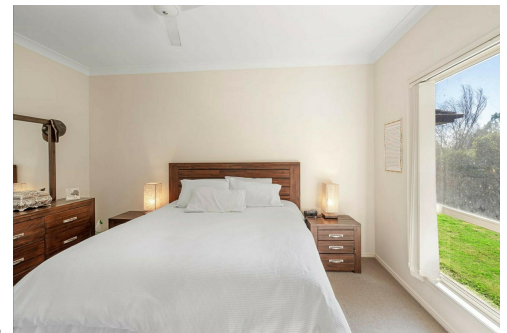
Brianna Dobbie 0459 966 749

Executive Assistant to Trina Wilson | ea1@ljhbeenleigh.com.au

LJ Hooker Beenleigh (07) 3807 7900

14-16 James Street, BEENLEIGH QLD 4207

beenleigh.ljhooker.com.au | bso@ljhbeenleigh.com.au



Disclaimer: All information contained therein is gathered from relevant third parties sources. We cannot guarantee or give any warranty about the information provided. Interested parties must rely solely on their own enquiries.

**LJ Hooker Beenleigh
(07) 3807 7900**