



Edens Landing, 16 Duesbury Crescent

Stylish Family Home in Edens Landing

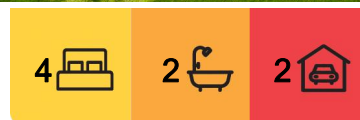
Nestled in the heart of Edens Landing this beautifully well presented 4 bedroom, 2 bathroom home is perfect for a family, with ideal blend of comfort and convenience. The home is filled with an abundance of natural light and features a cozy pot belly fireplace, offering warmth and charm positioned on 668m². A great home for entertaining with a covered patio with a cubby house in the back garden.

Key Features:

- * 4 bedrooms, main with ensuite (only 12 months old) and Giant walk in wardrobe
- * Split Air Conditioners (3)
- * Covered Patio
- * Free standing 900m Smeg gas cooker (tepingaki plate & grill plate included)
- * Brand New dishwasher
- * Kitchen fitted with pull out draws to maximise storage
- * 3 Garden Sheds



Disclaimer: All information contained therein is gathered from relevant third parties sources. We cannot guarantee or give any warranty about the information provided. Interested parties must rely solely on their own enquiries.



For Sale
Offers Over \$769,000

View
ljhooker.com.au/1YKYHGS

Contact
Christie Smith
0419 684 184
csmith@ljhcomplete.com.au
Adam Sargeant
0407 739 919
asargeant@ljhcomplete.com.au

LJ Hooker Property Complete
1300 360 388

* Internal laundry

Edens Landing facilities include but not limited to:

2.4 km to the new Bethania Lifestyle Centre, home to a range of large format retailers including auto, medical, lifestyle services and the Department of Transport and Main Roads

2.1 km to Bunnings - opposite the Bethania Lifestyle Centre

1.8 km to Holmview Central, home to Woolworths and a range of specialty retailers.

1 km to Edens Landing Train Station & 3 km to Holmview Train Station.

4.7 km to Beenleigh Market Place

4.7 km to Chris Green Park - adjacent is the Doug Larsen BMX Park.

550m walking distance to Edens Landing State School

Edens Landing is a hidden gem and has plenty of facilities, very close to public transport and 30 minute drive to either Brisbane or the Gold Coast.

Disclaimer:

Property images may have been digitally altered or staged for marketing purposes and may not constitute a complete representation of the property condition being purchased.

Any photographs used by LJ Hooker may only show certain aspects of the property at the time the photographs are taken and any prospective buyer should inspect the property.

More About this Property

Property ID	1YKYHGS
Property Type	House
House Size	253 m ²
Land Area	668 m ²
Including	Ensuite Air Conditioning Toilets (2) Dishwasher Outdoor Entertaining Built-in-Robes

Christie Smith 0419 684 184

Principal & Licensee | csmith@ljhcomplete.com.au

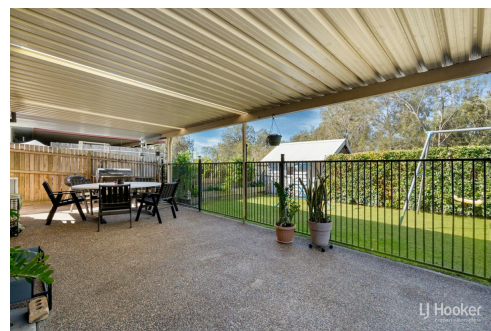
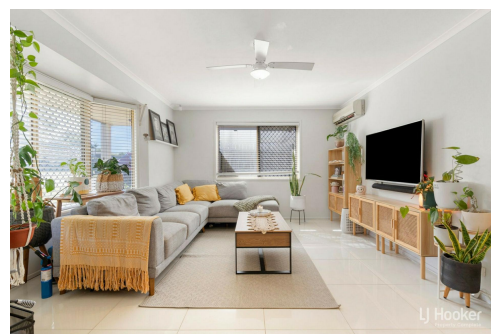
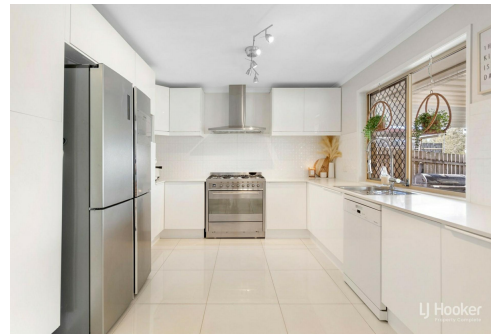
Adam Sargeant 0407 739 919

Sales Consultant | asargeant@ljhcomplete.com.au

LJ Hooker Property Complete 1300 360 388

Level 1, 32 Everglade Street, YARRABILBA QLD 4207

propertycomplete.ljhooker.com.au | admin@ljhcomplete.com.au



Disclaimer: All information contained therein is gathered from relevant third parties sources.

We cannot guarantee or give any warranty about the information provided. Interested parties must rely solely on their own enquiries.

**LJ Hooker Property Complete
1300 360 388**



16 Duesbury Crescent EDENS LANDING

4 | 2 | 1 | 253m²

LJ Hooker

All dimensions are approximate; they are subject to errors and inaccuracies and no liability will be accepted.
Plans are shown for marketing purposes only.

LJ Hooker

LJ Hooker Property Complete
1300 360 388

Disclaimer: All information contained therein is gathered from relevant third parties sources.
We cannot guarantee or give any warranty about the information provided. Interested parties must rely solely on their own enquiries.