

Echuca, Cabin 15 25-51 Crescent Street

CABIN 15 RICH RIVER TOURIST PARK - Permanent Living

Rich River Tourist Park is located in Echuca Victoria near the border with New South Wales. It is a scenic setting close to the Murray River, offering a range of facilities with swimming pool, BBQ facilities and an outdoor community area.

CABIN 15 OFFERS:

- ~Permanent Living
- ~Two Bedrooms
- ~Split System Air Conditioners
- ~Ceiling Fans
- ~Open Plan Living
- ~Landscaped Gardens
- ~Pet Friendly



For Sale
\$145,000

View
By Appointment

Contact
Allison Minter
0419 593 801
allison.minter@ljhooker.com.au

Wayne Rees
0499 355 105
wayne.rees@ljhooker.com.au



Disclaimer: All information contained therein is gathered from relevant third parties sources. We cannot guarantee or give any warranty about the information provided. Interested parties must rely solely on their own enquiries.

LJ Hooker Echuca
(03) 5480 6922

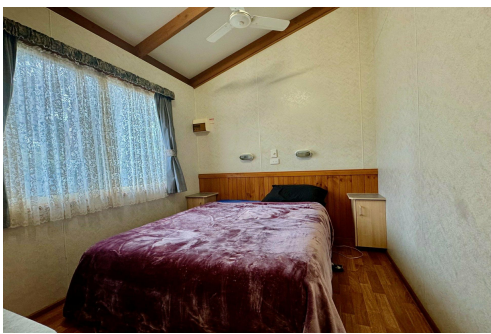
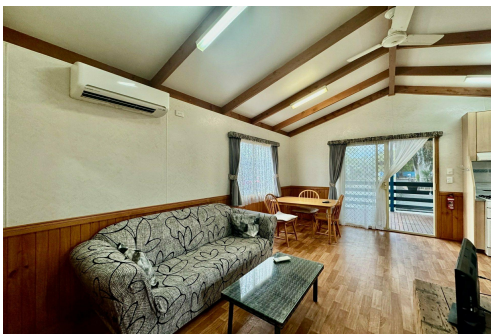
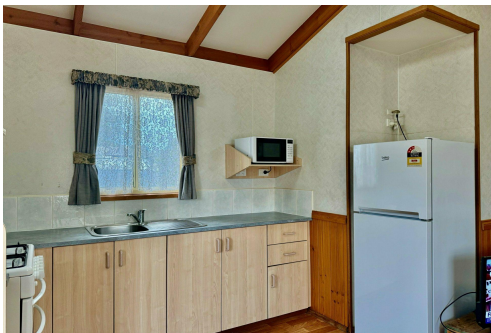
This cabin is a great option if you are looking for a comfortable and well-maintained permanent home with modern amenities and a pleasant outdoor space close to the Murray River walks and bush trails and Echuca CBD.

More About this Property

Property ID	RUKFBW
Property Type	Unit

Allison Minter 0419 593 801
Principal | allison.minter@ljhooker.com.au
Wayne Rees 0499 355 105
Sales Consultant | wayne.rees@ljhooker.com.au

LJ Hooker Echuca (03) 5480 6922
1/249 Anstruther Street, ECHUCA VIC 3564
echuca.ljhooker.com.au | echuca@ljhooker.com.au



Disclaimer: All information contained therein is gathered from relevant third parties sources.
We cannot guarantee or give any warranty about the information provided. Interested parties must rely solely on their own enquiries.

LJ Hooker Echuca
(03) 5480 6922