



1 Riversleigh Crescent, Eatons Hill

LIFESTYLE, LUXURY AND FAMILY LIVING IN EATONS HILL

Thoughtfully renovated for effortless family living, this home has been lovingly transformed by the owners who are now ready to create their next masterpiece.


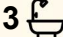
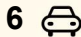
From the moment you step inside, you're greeted by an abundance of natural light and a flowing open-plan design. Multiple living areas connect seamlessly with the spacious undercover entertaining zones, creating the perfect setting for gatherings both big and small.

With five bedrooms plus a study, three bathrooms, and a stunning kitchen at the heart of the home, there's room here for every member of the family.

Outdoors is just as impressive with an inviting inground pool, dual entertaining areas, a generous yard for kids to explore, and even space for the caravan. Surrounded by parkland and nature, this is a home that celebrates lifestyle, luxury and family living all in one.

Features:

- 5 Bedrooms + separate study
- Master suite with built-in robes and renovated ensuite

5  3  6 

FOR SALE
Contact Agent

AGENTS

Wayne Cornell
0410 405 031
wcornell.albanycreek@ljhooker.com.au

AGENCY

LJ Hooker Albany Creek | Warner
(07) 3264 9000

All information contained therein is gathered from relevant third parties sources.
We cannot guarantee or give any warranty about the information provided.
Interested parties must rely solely on their own enquiries.



- Family bathroom with elegant bath overlooking bushland
- 2 Living areas
- Room for the caravan, boat or additional car accommodation
- Side access with storage for small car or trailer
- Open-plan renovated kitchen with island bench, gas cooking and high end finishes
- Downstairs bathroom - Perfect for guest & pool bathroom
- Sparkling-inground pool with water feature
- 2 Outdoor entertaining areas
- Flat, usable yard
- Garden shed
- Water tank
- 10kw Solar with 6kw inverter
- Ceiling fans throughout
- Split-system air conditioning
- EV Charger
- Mud room

Location:

- Bushland outlook
- Stones throw to local park
- Walking distance to bus stop
- 2.8km to Eatons Shopping Village
- 1.7km to Eatons Hill State School
- 5.1km to Albany Creek High School

Disclaimer:

"Information contained on any marketing material, website or other portal should not be relied upon. You should make your own enquiries and seek your own independent advice with respect to any property advertised or the information about the property."

"LJ Hooker Property Connections also offer a property management service. If you're considering renting your property, are looking to buy or would like a free review of your current portfolio, please call our main office on (07) 3264 9000."

MORE DETAILS

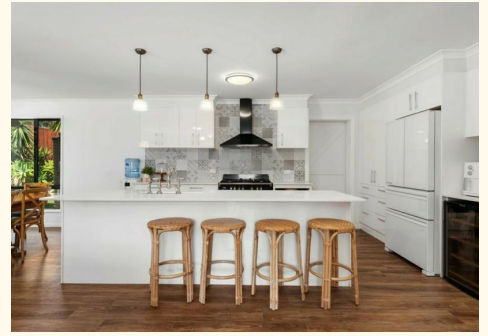
Property ID	1TXKF1H
Property Type	House
Land Area	800 m2
Including	Ensuite Study Toilets (3) Pool Dishwasher Outdoor Entertaining Built-in-Robes Secure Parking Fully Fenced Remote Garage Solar Panels Water Tank

Wayne Cornell 0410 405 031

Sales Consultant | wcornell.albanycreek@ljhooker.com.au

LJ Hooker Albany Creek | Warner (07) 3264 9000

699 Albany Creek Road, ALBANY CREEK QLD 4035
albanycreek.ljhooker.com.au | albanycreek@ljhooker.com.au





1 Riversleigh Crescent, Eatons Hill

Internal: 249 sqm Porch: 5 sqm Covered Patio: 169 sqm Total: 423 sqm Land: 800 sqm

DISCLAIMER:
THIS FLOOR PLAN IS FOR ILLUSTRATIVE PURPOSE ONLY. WHILST EVERY ATTEMPT HAS BEEN MADE TO ENSURE THE ACCURACY OF THIS PLAN, ALL MEASUREMENTS ARE APPROXIMATE ONLY NO RESPONSIBILITY IS TAKEN FOR ANY ERRORS, OMISSION OR MISS-STATEMENT. POTENTIAL PURCHASERS SHOULD MAKE THEIR OWN ENQUIRIES AS TO THE ACCURACY OF THIS FLOOR PLAN.

