

Eaton, 7 Sindhi Close

Quiet Cul-de-Sac Living in Eaton's Parkridge Estate

Welcome to this 4-bedroom, 2-bathroom family home, perfectly positioned on an elevated 822sqm block at the end of a peaceful cul-de-sac in the sought-after Parkridge Estate, Eaton.

With no through traffic and lovely views of the hills, this property offers both privacy and convenience. You'll love the tranquil setting, with a beautiful park just down the road, and Eaton Fair Shopping Centre and the Collie River just minutes away.

Features include:

- 4 bedrooms 2 bathrooms
- Master suite with walk-in robe and ensuite
- BIR to all secondary bedrooms
- Separate lounge/theatre room for cozy family nights in
- Light-filled open-plan kitchen, dining, and living area perfect for entertaining



Disclaimer: All information contained therein is gathered from relevant third parties sources. We cannot guarantee or give any warranty about the information provided. Interested parties must rely solely on their own enquiries.



For Sale
Offers Over \$575,000

View
ljhooker.com.au/16HMHND

Contact
Rebecca Maskell
0437 085 992
rebecca.maskell@ljhsouthwest.com.au

Daniel White
0429 086 856
daniel.white@ljhsouthwest.com.au

LJ Hooker Property South West WA
(08) 9791 6880

- Comfort year-round with reverse cycle air conditioning and ceiling fans throughout
- Spacious backyard offers a blank canvas ready for you to create your dream outdoor retreat
- Large side access ideal for storing a boat or caravan
- Solar panels for energy efficiency and lower bills

This home ticks all the boxes for a comfortable family living in a quiet yet convenient location. Don't miss your chance to make it yours!

Contact your exclusive agent Rebecca Maskell today to arrange a viewing or for more information.

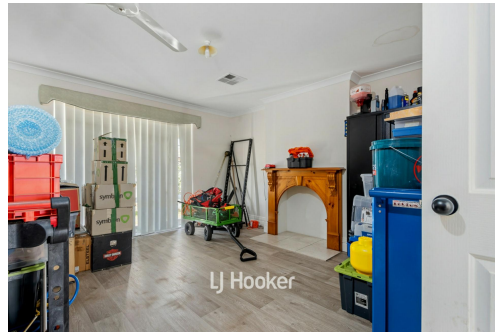
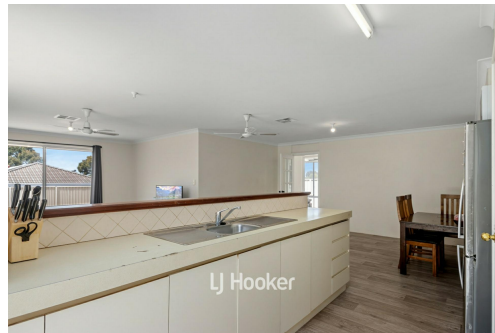
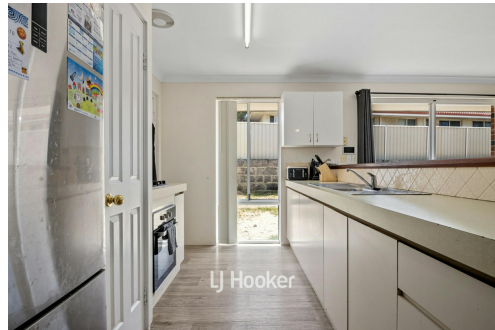
Disclaimer: Whilst every care has been taken in the preparation of this advertisement and the approximate outgoings, all information supplied by the seller and the seller's agent is provided in good faith. Prospective purchasers are encouraged to make their own enquiries to satisfy themselves on all pertinent matters. Images are for illustrative purposes.

More About this Property

Property ID	16HMHND
Property Type	House
House Size	153 m²
Land Area	822 m²

Rebecca Maskell 0437 085 992
 Sales Consultant | rebecca.maskell@ljhsouthwest.com.au
Daniel White 0429 086 856
 Sales Consultant | daniel.white@ljhsouthwest.com.au

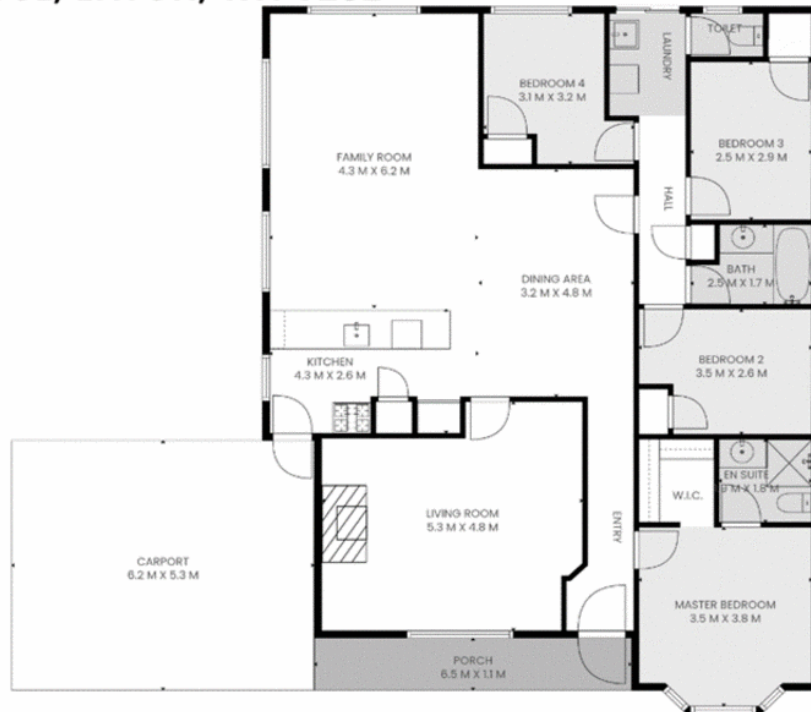
LJ Hooker Property South West WA (08) 9791 6880
 130 Victoria Street, BUNBURY WA 6230
southwestwa.ljhooker.com.au | bunbury@ljhsouthwest.com.au



Disclaimer: All information contained therein is gathered from relevant third parties sources. We cannot guarantee or give any warranty about the information provided. Interested parties must rely solely on their own enquiries.

LJ Hooker Property South West WA
(08) 9791 6880

7 SINDHI CLOSE, EATON, WA 6232



TOTAL: 145 m²
FLOOR 1: 145 m²
EXCLUDED AREAS: PORCH: 7 m², CARPORT: 33 m²
MEASUREMENTS ARE CALCULATED USING ADVANCED TECHNOLOGY BY EVENTUALLY CREATIVE, DEEMED HIGHLY RELIABLE BUT NOT GUARANTEED.



LJ Hooker Property South West WA
(08) 9791 6880

Disclaimer: All information contained therein is gathered from relevant third parties sources.
 We cannot guarantee or give any warranty about the information provided. Interested parties must rely solely on their own enquiries.