



1105/128 Banks Avenue, Eastgardens

2 🏠 2 🚿 1 🚗

Modern Apartment with Panoramic Views in Pagewood Green

FOR SALE
SOLD | Contact Agent

AGENTS

Aaron Del Monte
0447 144 434
aaron.delmonte@ljhdoublingbay.com

James Makris
04237 14622
james.makris@ljhdoublingbay.com

AGENCY

LJ Hooker Double Bay
(02) 9185 2816

Experience elevated living in this light-filled corner apartment within the prestigious Allium building at Pagewood Green. Offering breathtaking views of Botany Bay and lush golf courses, this contemporary residence blends luxury, convenience, and lifestyle. Designed with functionality and elegance in mind, it's the perfect choice for homebuyers and investors alike.

- Sun-drenched corner position with expansive views of Botany Bay and golf courses
- Open-plan lounge, dining, and kitchen flowing seamlessly to a spacious balcony
- Gas kitchen with island bench, stone benchtops, and premium appliances
- Two large bedrooms with built-in wardrobes and full-length windows
- Master bedroom features a sleek ensuite with bathtub
- Stylish fully tiled bathrooms and internal laundry for convenience
- Secure car space, ample storage, and ducted air conditioning
- Resort-style facilities: indoor pool, gym, sauna, spa, outdoor cinema

All information contained therein is gathered from relevant third parties sources.
We cannot guarantee or give any warranty about the information provided.
Interested parties must rely solely on their own enquiries.

 **LJ Hooker**

- Onsite amenities including childcare, cafes, retail, and a supermarket
- Moments to public transport, Eastgardens, Sydney Airport, and city beaches

MORE DETAILS

Property ID 29DHYY
Property Type Unit

Aaron Del Monte 0447 144 434

Managing Director | aaron.delmonte@ljhdoublebay.com

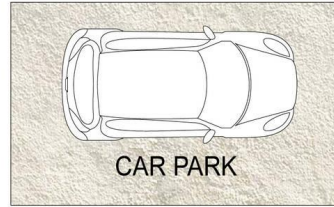
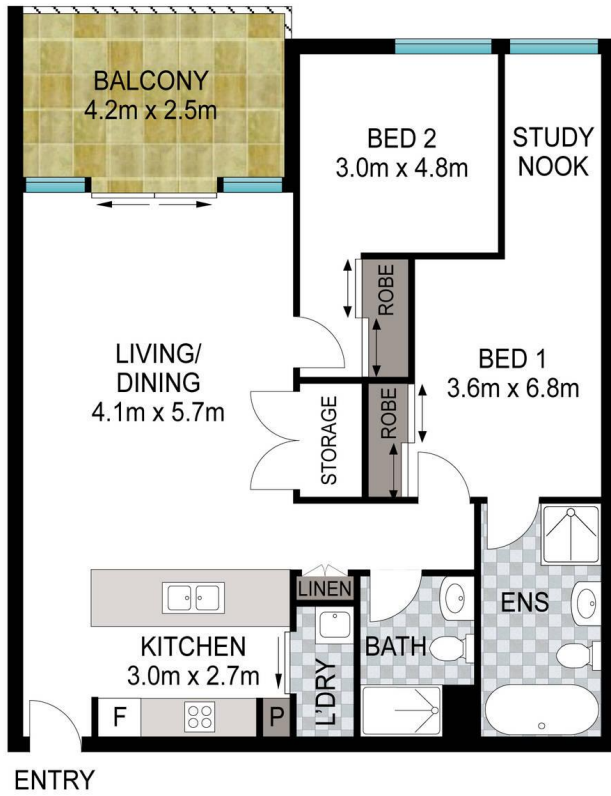
James Makris 0423714622

Property Partner | james.makris@ljhdoublebay.com

LJ Hooker Double Bay (02) 9185 2816

38 Ocean Street, WOOLLAHRA NSW 2025
doublebay.ljhooker.com.au | admin@ljhdoublebay.com





(NOT IN POSITION)

1 2 3 4 5

Scale in metres. Indicative only. Dimensions are approximate. All information contained herein is gathered from sources we believe to be reliable. However we cannot guarantee its accuracy and interested persons should rely on their own enquiries.



105/128 Banks Avenue, Eastgarden

All information contained therein is gathered from relevant third parties sources.
 We cannot guarantee or give any warranty about the information provided.
 Interested parties must rely solely on their own enquiries.

