

East Victoria Park, 23 Hampshire Street

MULTIPLE OFFERS RECEIVED!

Proudly Presented by Edward Lim...

Step into a world where history whispers its secrets and modern luxury takes centre stage! Nestled on a spacious 430m2 green title block, this gem is a treasure trove brimming with excitement. Featuring three opulent bedrooms, a chic formal lounge, and a sprawling open-plan living/dining area, this home is crafted to exceed your wildest dreams. Meet 23 Hampshire and get ready to be wowed!

Cross the threshold of this mesmerizing weatherboard beauty, born in 1949, and prepare to be enchanted! Overflowing with charisma, this home boasts lofty ceilings, gleaming jarrah floors, and an original fireplace, exuding the irresistible charm of yesteryear. Immaculately preserved and a warm sanctuary beckoning you to craft memories that will last a lifetime!

3 1 1

For Sale
Please Call

View
ljhooker.com.au/5ETBFFB

Contact
Edward Lim
0408 929 655
edward.lim@ljhvicpark.com.au



Disclaimer: All information contained therein is gathered from relevant third parties sources. We cannot guarantee or give any warranty about the information provided. Interested parties must rely solely on their own enquiries.

**LJ Hooker Victoria Park | Belmont
(WA)
(08) 9473 7777**

Welcome to the inviting formal lounge area, the beating heart of this home where bonds are forged and adventures begin. Whether you're unwinding after a hectic day or weaving tales with loved ones, this cosy corner is where magic happens. Step into the soul of the home, where every embrace is warmer, every laugh echoes louder, and every moment is etched with pure joy!

Get ready to be dazzled by the open-plan kitchen, where style and functionality meet in perfect harmony. With abundant storage, expansive countertops including a kitchen island, and modern appliances that transform cooking into an art form, this space is a culinary paradise. Get set to whip up delightful dishes and serve happiness on a platter!

The floorplan effortlessly integrates open-plan living, dining, and kitchen areas, leading to a vast outdoor oasis at the rear. It's like discovering a hidden paradise in your own backyard, inviting you to unwind and bask in serene surroundings. Plus, enjoy the convenience of an outdoor laundry area and a separate toilet. Embrace the tranquillity right at home!

Located in the heart of Perth's premier restaurant and cafe strip, this home offers a sanctuary for those who cherish the finer things in life. Indulge in exquisite dining, vibrant nightlife, and stylish boutiques, all just steps away. Immerse yourself in a world where luxury meets convenience!

Contact listing agent Edward Lim today at 0408 929 655.

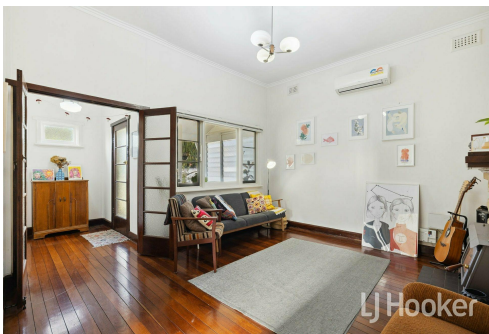
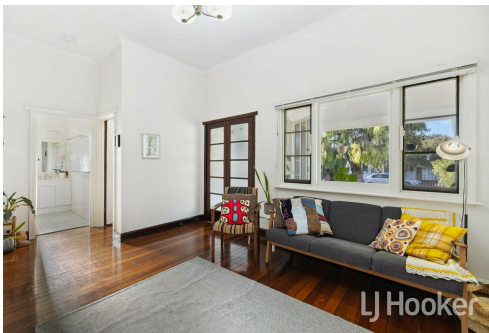
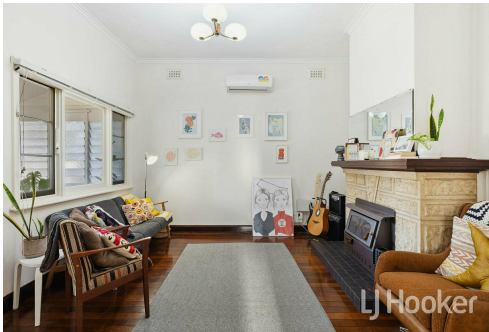
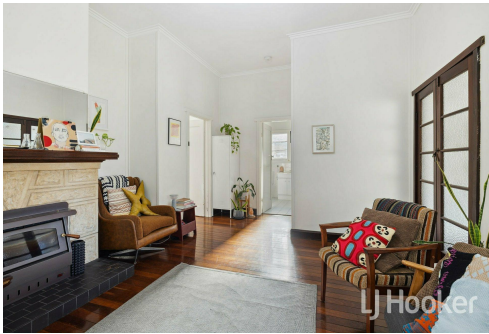
** We have obtained all information in this document from sources we believe to be reliable; however, we cannot guarantee its accuracy. Prospective purchasers are advised to carry out their own investigations.**

More About this Property

Property ID	5ETBFFB
Property Type	House
Land Area	430 m²
Including	Air Conditioning Toilets (2) Floorboards

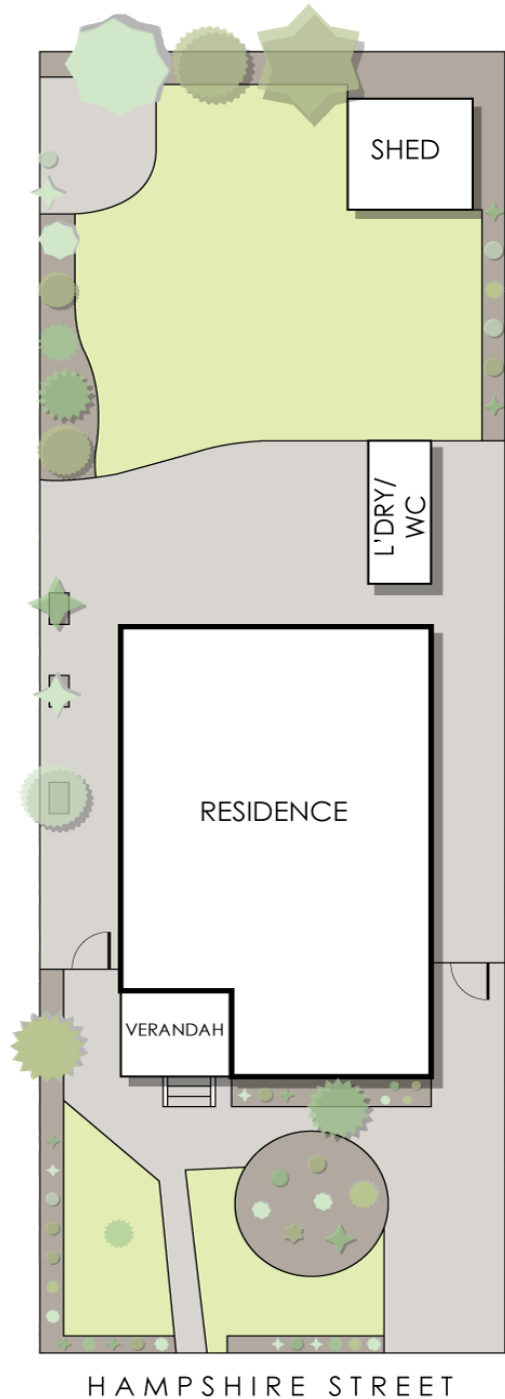
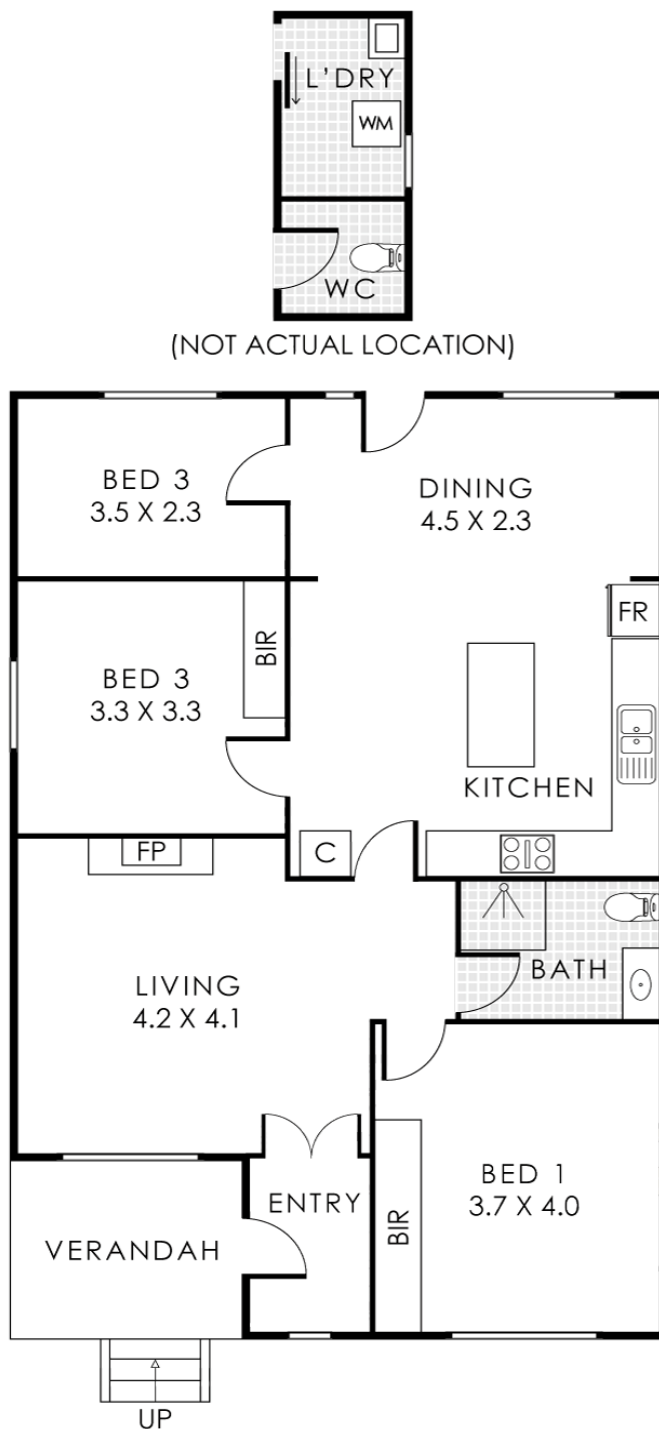
Edward Lim 0408 929 655
Sales Consultant | edward.lim@ljhvicpark.com.au

LJ Hooker Victoria Park | Belmont (WA) (08) 9473 7777
288 Albany Highway, VICTORIA PARK WA 6100
victoriapark-belmontwa.ljhooker.com.au | reception@ljhvicpark.com.au



Disclaimer: All information contained therein is gathered from relevant third parties sources. We cannot guarantee or give any warranty about the information provided. Interested parties must rely solely on their own enquiries.

LJ Hooker Victoria Park | Belmont (WA) (08) 9473 7777



23 Hampshire Street, East Victoria Park

Residence 91m² | L'dry/WC 6m² | Verandah 6m²

Total Area 103m²



This floorplan is for illustration purposes only to show the layout of the property. Whilst every effort has been made to ensure the accuracy of this floor plan, all measurements, and any other information shown are an approximate interpretation only. Measurements and total areas do not include or account for wall thickness or roof area under eaves. Crib Creative will not be held liable or responsible for any error, omission, misrepresentation or use of any information shown on the final floor plan. Not to be used for any other purpose. www.cribcreative.com.au