



5 Sonnenberg Street, East Toowoomba

Eastside Entry Level home, perfect starter or amazing renovation opportunity.

Set in a surprisingly quiet location with views out across the range this 1960's time capsule offers a unique floorplan that could easily be transformed to expand the home. Set on a spacious allotment oozing quirky charm and potential, hard to find in today's market.

Boasting-

- 2 Generous bedrooms with built in wardrobes and porthole windows
- Centrally located bathroom with separate bath tub
- Separate kitchen with heaps of storage and gas cook top
- Formal dining room adjoining the lounge complemented by an open fire place
- North easterly facing sunroom
- Beautiful timber floors throughout and stone feature chimney
- Single car garage plus a carport
- Escarpment location with Range vistas

We have the location and the outlook. This home offers a fantastic entry point to the premium east side of Toowoomba. Great first abode or a fantastic home to use part time of you travel to Toowoomba

All information contained therein is gathered from relevant third parties sources.
We cannot guarantee or give any warranty about the information provided.
Interested parties must rely solely on their own enquiries.

2 1 2

FOR SALE

Offers Over \$840,000

VIEW

By Appointment

AGENTS

Matthew Keeley
0437 720 885
mkeeley@ljht.com.au

Sarah Fard
0474 571 674
sfard@ljht.com.au

AGENCY

LJ Hooker Toowoomba
(07) 4688 2222



frequently.

Close to the Shops, School & Hospitals with fantastic access down the Range to Brisbane and the Coast

MORE DETAILS

Property ID	2024F4W
Property Type	House
Land Area	875 m2

Matthew Keeley 0437 720 885

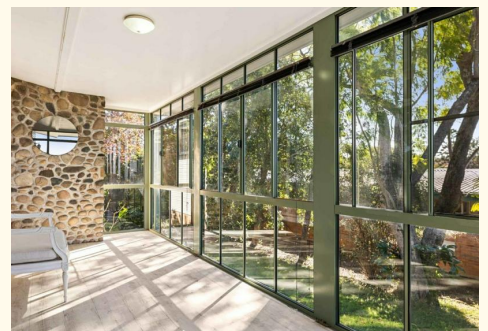
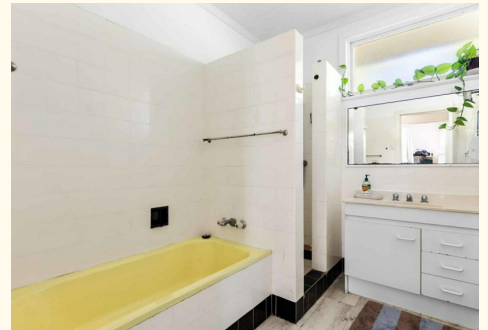
Residential Sales Manager | mkeeley@ljht.com.au

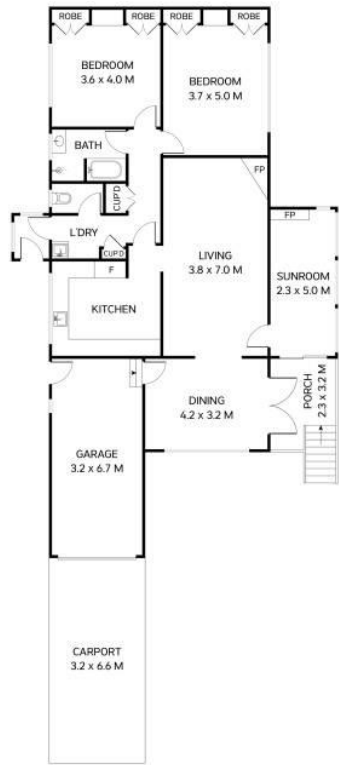
Sarah Fard 0474 571 674

Residential Sales Executive | sfard@ljht.com.au

LJ Hooker Toowoomba (07) 4688 2222

Level 1, 677-683 Ruthven Street, TOOWOOMBA QLD 4350
toowoomba.ljhooker.com.au | toowoomba@ljht.com.au





FLOOR PLAN



SITE PLAN



Total: 178m²

5 Sonnenberg Street
East Toowoomba



This plan is for representational purposes only. All dimensions are approximate and shouldn't be solely relied upon.
Floorplan created by **Vue Digital**.