




16 Jewell Lane, East Perth

Rare Riverfront Luxury - A Masterpiece of Design

Set along one of East Perth's most tightly held riverfront locations, 16 Jewell Lane offers a rare and remarkable opportunity to embrace true waterfront living in one of Perth's most exclusive enclaves. Designed and built by the renowned Seacrest Homes, this one-owner residence exemplifies enduring quality, precision craftsmanship, and timeless style. From the moment you step beneath the cedar-lined portico, you are greeted by the soothing sound of gentle water features and the soft rustle of lush greenery, immediately setting a tone of serenity and sophistication. Every detail has been carefully considered to create a home that balances architectural beauty with an authentic connection to its natural surroundings.

Stepping inside, you are welcomed by an abundance of natural light and breathtaking views that stretch across the Swan River, parklands, and Optus Stadium. The open-plan living and dining areas have been designed with both relaxation and entertaining in mind, seamlessly flowing onto a vast entertainer's balcony complete with cedar-lined ceilings and a built-in BBQ. Here, you can savour the ever-changing moods of the river and skyline - from tranquil dawn reflections to glittering city lights by night. The generous proportions, premium finishes, and thoughtful layout create a sense of openness and calm,

3  2  2 

FOR SALE

Sold by Brendan & Sharon Smith

AGENTS

Brendan Smith

0420 217 818

brendan.smith@ljhooker.com.au

Sharon Smith

0405 814 948

sharon.smith@ljhooker.com.au

AGENCY

LJ Hooker City Residential

(08) 9325 0700

All information contained therein is gathered from relevant third parties sources. We cannot guarantee or give any warranty about the information provided. Interested parties must rely solely on their own enquiries.

 **LJ Hooker**

making this home as inviting as it is impressive.

At the heart of the residence lies a gourmet kitchen that blends refined aesthetics with practical functionality. Outfitted with Miele appliances, granite and marble finishes, and bespoke cabinetry crafted from solid American oak and burlled timber, it showcases craftsmanship of the highest order. The attention to detail continues throughout, with granite thresholds, vitrified tiles, and exquisite joinery providing a cohesive sense of quality and warmth. Every aspect of this home has been curated to endure - not just in design, but in the materials chosen and the thoughtful integration of spaces that encourage effortless living.

The lower level of the home offers a private haven of comfort and retreat. Two spacious bedrooms are complemented by a beautifully detailed marble bathroom, while a dedicated theatre room and a flexible gym or music room open onto a tranquil courtyard framed by lush greenery and a soothing water feature. This peaceful outdoor sanctuary creates a seamless connection between the indoors and nature - a rare luxury in the heart of the city. Upstairs, the master suite provides an equally refined escape, complete with a curved glass ensuite, cedar-lined balcony, and panoramic river views from every angle. A custom-designed office and intimate sitting area add to the sense of sanctuary, offering spaces that inspire both productivity and reflection.

Ideally positioned just a short stroll from Claisebrook Cove, the home enjoys immediate access to a vibrant selection of cafés, fine dining, and riverside walks, while maintaining a feeling of privacy and exclusivity rarely found so close to the city. This remarkable location allows you to enjoy the best of both worlds - the peace and tranquillity of the riverfront, paired with the energy and convenience of inner-city living. Whether as a family residence or an elegant retreat, 16 Jewell Lane offers a lifestyle defined by luxury, comfort, and connection to the natural beauty of Perth's waterfront.

Featured Highlights:

- " Seacrest Homes built—renowned craftsmanship and impeccable quality
- True riverfront position with uninterrupted Swan River views
- Expansive balconies with parkland, river, and city skyline outlooks
- Gourmet kitchen with Miele appliances, granite and marble finishes
- Master suite sanctuary with curved glass ensuite and cedar balcony
- Private courtyard oasis with water feature and lush landscaping
- Secure double garage with integrated concealed storage
- Solid American oak cabinetry and detailed timber joinery throughout
- Cedar ceilings, vitrified tiles, granite thresholds, and marble features
- " Ducted climate control and superior acoustic soundproofing
- Moments from Claisebrook Cove's cafés, restaurants, and riverside walks

With so few genuine riverfront homes ever available in East Perth, 16 Jewell Lane stands as a landmark residence that captures the essence of timeless luxury and architectural excellence. Every element - from its bespoke finishes to its spectacular setting - has been crafted to last for generations. This is more than a home; it is a rare opportunity to own an enduring piece of Perth's riverfront.

Details:

- Land Area 217sqm
- Council \$3,574.95 pa
- Water: \$2,564.55 pa

MORE DETAILS

Property ID 3UB9FGJ
Property Type House

Brendan Smith 0420 217 818

Sales Executive â€” The Smith Team |
brendan.smith@ljhooker.com.au

Sharon Smith 0405 814 948

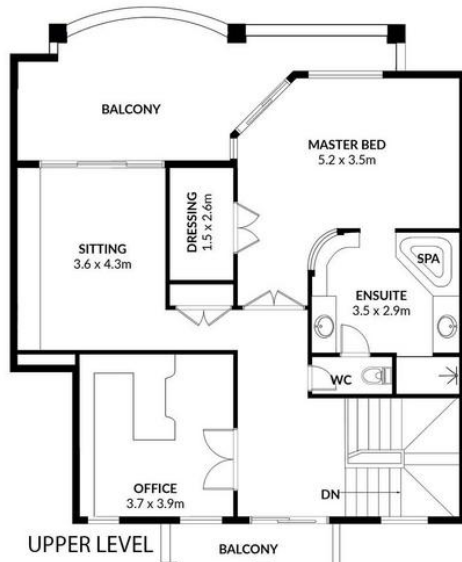
Sales Executive â€” The Smith Team |
sharon.smith@ljhooker.com.au

LJ Hooker City Residential (08) 9325 0700

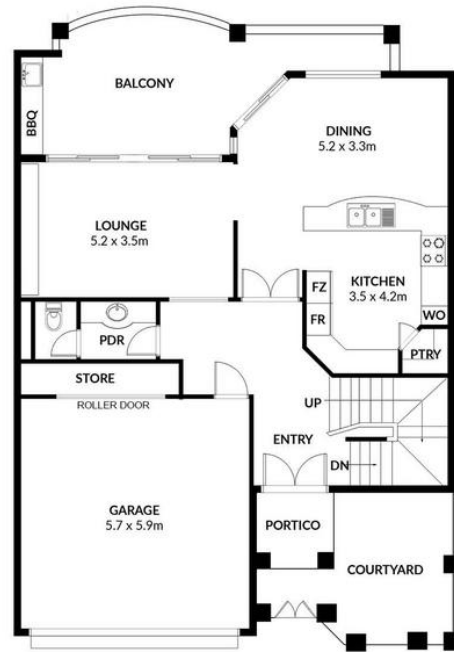
Shop 30, 82 Royal Street, EAST PERTH WA 6004
cityresperth.ljhooker.com.au | hello@ljhpxp.com.au



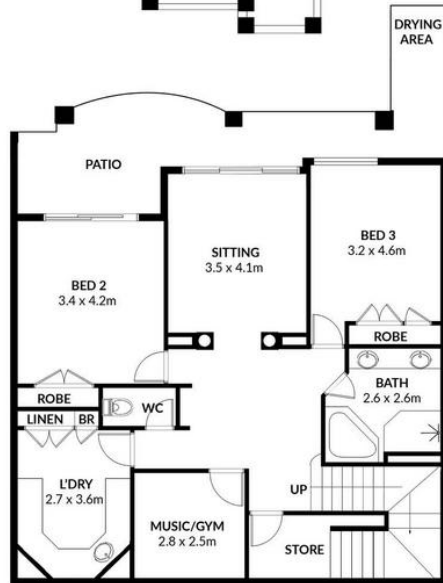
All information contained therein is gathered from relevant third parties sources.
We cannot guarantee or give any warranty about the information provided.
Interested parties must rely solely on their own enquiries.



UPPER LEVEL



GROUND LEVEL



BASEMENT LEVEL

<i>Approximate Areas</i>	
Internal Area	307m ²
Garage	38m ²
Ground Balcony	25m ²
Upper Balconies (combined)	31m ²
Total Lot Size	217m ²



16 Jewell Lane, East Perth

This floor plan is for illustrative purposes only. While every effort has been made to provide an accurate representation, all measurements & other information are approximation only.

www.propertyexperience.ljhooker.com.au
www.perthrealestatemedia.com

