



East Perth, 16/18 Wellington Street

Contemporary Charm!



Located in the secure and intimate "Aspect on Wellington" complex, this delightful 1-bedroom, 1-bathroom apartment offers a modern and comfortable living experience in the heart of vibrant East Perth.

Inside, the apartment features a spacious open-plan living and dining area, with a stylish kitchen equipped with stone benchtops, double sinks, and high-quality electric appliances, including a rangehood, hotplate, and oven. The bedroom is carpeted for comfort and features mirrored built-in wardrobes.

The main bathroom is designed for functionality, with a shower, powder vanity, and a cleverly concealed European-style laundry tucked behind double doors. The large, covered alfresco-style balcony off the living area is the perfect place to relax and unwind while enjoying a leafy outlook.

For Sale
Under Offer

View
ljhooker.com.au/3RUXFGJ

Contact
Brendan Smith
0420 217 818
brendan.smith@ljhooker.com.au
Sharon Smith
0405 814 948
sharon.smith@ljhooker.com.au



LJ Hooker City Residential
(08) 9325 0700

Disclaimer: All information contained therein is gathered from relevant third parties sources. We cannot guarantee or give any warranty about the information provided. Interested parties must rely solely on their own enquiries.

Residents have access to exceptional resort-style amenities, including a fully-equipped gym, a rooftop deck with barbecue facilities, and a spacious cinema room for movie nights. There's something for everyone to enjoy here.

Additional features include a secure single car bay, a storeroom, and easy access to the free Yellow and Red CAT bus services right across the road. Plus, with nearby parklands, the WACA Ground, Gloucester Park, and the lively Royal Street food and café precinct, you'll always have something to explore.

Key Features:

- Secure entry lobby with lift access
- Fully-equipped, air-conditioned gym
- Complex theatre room and rooftop barbecue facilities
- Spacious, carpeted open-plan living and dining area with split-system air-conditioning
- Quality electric kitchen appliances
- Large covered entertaining balcony
- Carpeted bedroom with mirrored built-in robes
- Concealed European-style laundry within the main bathroom
- Single car bay
- Storeroom
- Additional guest parking
- Outdoor communal area with wooden decking and water features
- Rented at \$570.00 per until 1st June 2025

Location Highlights (approximate distances):

- Free Red and Yellow CAT bus services at your doorstep
- 85m to the new Perth Girls' School precinct
- 350m to the Wellington Square redevelopment
- 750m to Claisebrook Cove
- 1.0km to Claisebrook Train Station
- 1.0km to the Swan River
- 1.6km to Optus Stadium
- 1.6km to Perth CBD
- In the Highgate Primary School and Bob Hawke College catchment zones
- Close to Mercedes College and Trinity College

Rates & Dimensions:

- Council Rates: \$1,473.25 p.a.
- Water Rates: \$1,059.78 p.a.
- Strata Admin: \$855.00 p/qtr
- Strata Reserve: \$198.00 p/qtr
- Internal Area: 58sqm
- Total Area: 107sqm



LJ Hooker City Residential
(08) 9325 0700

Disclaimer: All information contained therein is gathered from relevant third parties sources. We cannot guarantee or give any warranty about the information provided. Interested parties must rely solely on their own enquiries.

More About this Property

Property ID 3RUXFGJ

Property Type Apartment

Brendan Smith 0420 217 818

Sales Executive " The Smith Team | brendan.smith@ljhooker.com.au

Sharon Smith 0405 814 948

Sales Executive " The Smith Team | sharon.smith@ljhooker.com.au

LJ Hooker City Residential (08) 9325 0700

Shop 30, 82 Royal Street, EAST PERTH WA 6004

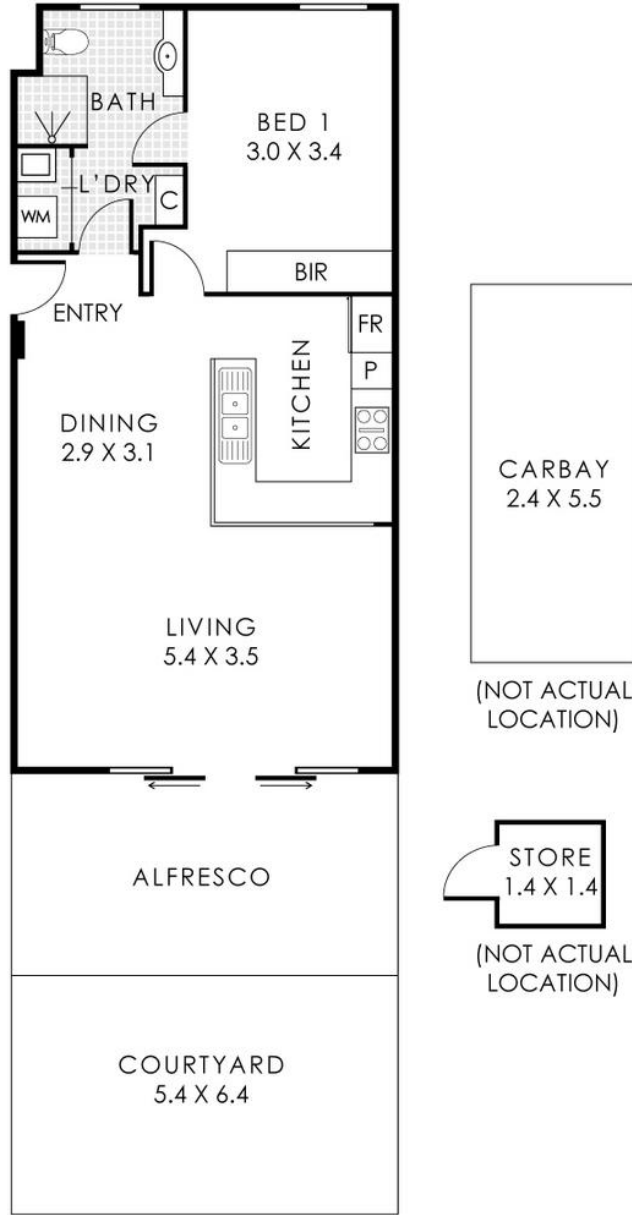
cityresperth.ljhooker.com.au | cityresperth@ljhooker.com.au



Disclaimer: All information contained therein is gathered from relevant third parties sources.

We cannot guarantee or give any warranty about the information provided. Interested parties must rely solely on their own enquiries.

**LJ Hooker City Residential
(08) 9325 0700**



16/18 Wellington Street, East Perth

Residence 58m² | Courtyard 34m² | Carbay 13m² | Store 2m²

Total Area 107m²



This floor plan is for illustrative purposes only to show the layout of the property. While every effort has been made to ensure the accuracy of this floor plan, all measurements, and any other information shown are on approximate representation only. Measurements and diagrams do not include or account for walls, fixtures or roof areas unless shown. One Check One will not be held liable or responsible for any errors, omissions, misrepresentation or use of any information shown on the floor plan. Not to be used for any other purpose. www.zillow.com.au