



82 Worcester Drive, East Maitland

SITTING PRETTY IN EAST MAITLAND!

Sitting in that sweet spot between East Maitland & Ashtonfield, this sizable family home delivers time & again, offering multiple living zones, side access and a low-maintenance lifestyle, this is an ideal opportunity for growing families, investors or those seeking a quality home in a central location.

Designed with everyday living in mind, the home features a light-filled open plan kitchen, meals and family area that seamlessly connects to a spacious formal lounge and dining room. A separate children's activity room or second living space provides valuable versatility, creating the perfect space for growing families.

At the heart of the home, the kitchen is complete with granite benchtops, abundant cabinetry, gas cooktop, dishwasher and split-system air conditioning. The master bedroom is positioned at the front of the home and includes a walk-in robe and ensuite plus AC, while the remaining three bedrooms are all tucked away at the rear of the house, each with built-in robes and ceiling fans.

Stepping outside, a covered alfresco leads around to the side & rear yard, and the side access on offer the ability to get your toys off street

4 2 2

FOR SALE
\$959,000 to \$989,000

VIEW
Sat 20th Jun @ 10:40AM - 11:00AM

AGENTS
Todd Fisher
0438 592 920
tfisher.maitland@ljhooker.com.au

Ben Cotton
0434 638 822
bcotton.maitland@ljhooker.com.au

AGENCY
LJ Hooker Maitland
(02) 4933 5511

All information contained therein is gathered from relevant third parties sources. We cannot guarantee or give any warranty about the information provided. Interested parties must rely solely on their own enquiries.

LJ Hooker

level.

Conveniently located just moments from Stockland Green Hills, the best of local schooling & the Maitland Hospital & Medical Precinct, this is a fantastic opportunity to secure a spacious family home in one of the area's most popular estates.

Proudly marketed by LJ Hooker Maitland, please call exclusive agents Todd Fisher 0438 592 920, Ben Cotton 0434 638 822 or Jack Fisher 0438 165 825- 7 days for all inspections & further information.

All information contained herein is gathered from sources we deem to be reliable. However, we cannot guarantee its accuracy and interested persons should rely on their own enquiries.

MORE DETAILS

Property ID	1F8TF6H
Property Type	House
Land Area	660 m2
Including	Ensuite
	Air Conditioning
	Toilets (2)
	Built-in-Robes
	Close to Schools
	Close to Shops
	Close to Transport

Todd Fisher 0438 592 920

Salesperson | tfisher.maitland@ljhooker.com.au

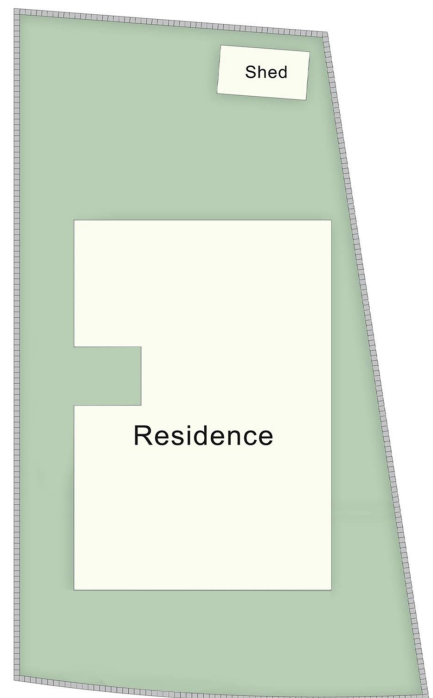
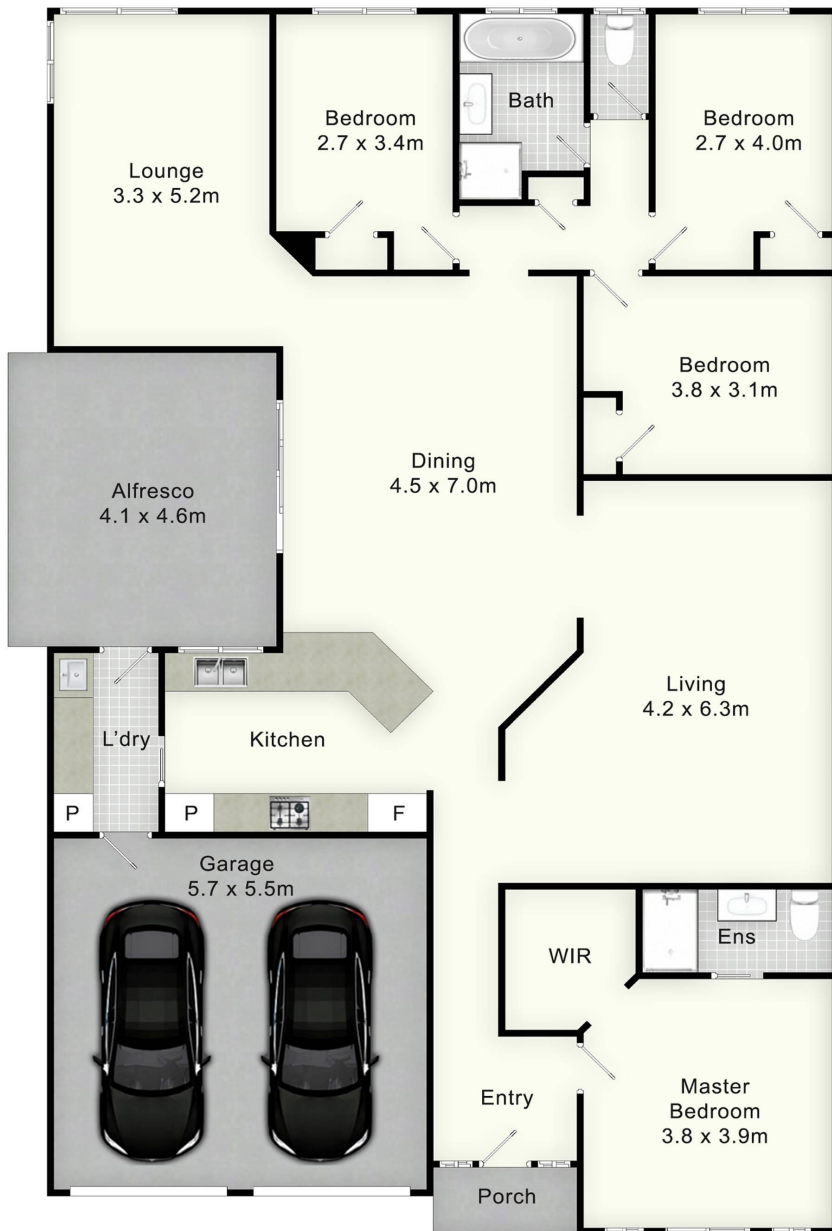
Ben Cotton 0434 638 822

Licensed Real Estate Agent & Auctioneer |
bcotton.maitland@ljhooker.com.au

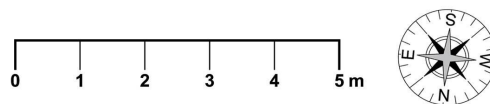
LJ Hooker Maitland (02) 4933 5511

24 Ken Tubman Drive, MAITLAND NSW 2320
maitland.ljhooker.com.au | maitland@ljhooker.com.au





Site Plan
(Not to Scale)



82 Worcester Dr, East Maitland

All information contained herein is gathered from sources we deem reliable. However, we cannot guarantee its accuracy and act as a messenger only in passing on the details. Interested parties should rely on their own inquiries and the contract for sale. The floor plans are artist's impressions only. The site plan is not to scale.



All information contained therein is gathered from relevant third parties sources. We cannot guarantee or give any warranty about the information provided. Interested parties must rely solely on their own enquiries.

