



East Maitland, 4 Cecily Close

Great First Home Or Investment!

Developers, Investors, Land Bankers or First Home Buyers sit up, and take note - as there's something here for you all!

Situated in BOOM TOWN, only minutes from all of the major tick boxes in our area - the new Maitland Hospital, the best of schooling options, the largest Mega Shopping Centre in the LGA & super accessible with public transport options almost on your doorstep - this presents as a cracking option to all!

4 Cecily Close reflects a modest 3 bedroom brick & hardiflex home with all bedrooms centrally located to the bathroom. The large lounge area is offset from the modest kitchen & dining space. The home benefits from double garaging, plus another workshop/storage option, with a large 2 bay colourbond shed located in the yard - which comes in at approximately 770sqm.



For Sale
\$550,000

View
ljhooker.com.au/1DJ6F6H

Contact
Todd Fisher
0438 592 920
tfisher.maitland@ljhooker.com.au
Ben Cotton
0434 638 822
bcotton.maitland@ljhooker.com.au



LJ Hooker Maitland
(02) 4933 5511

Disclaimer: All information contained therein is gathered from relevant third parties sources. We cannot guarantee or give any warranty about the information provided. Interested parties must rely solely on their own enquiries.

For Sale now or at Public Auction 26/10 - onsite at 11:30AM! Proudly marketed by LJ Hooker Maitland, please call exclusive agents Todd Fisher 0438 592 920 or Ben Cotton 0434 638 822 - 7 days for all inspections & further information.

All information contained herein is gathered from sources we deem to be reliable. However, we cannot guarantee its accuracy and interested persons should rely on their own enquiries.

More About this Property

Property ID	1DJ6F6H
Property Type	House
Land Area	770 m ²
Including	Air Conditioning Toilets (1) Close to Schools Close to Shops Close to Transport

Todd Fisher 0438 592 920

Principal/Licensee in Charge | tfisher.maitland@ljhooker.com.au

Ben Cotton 0434 638 822

Licensed Real Estate Agent & Auctioneer | bcotton.maitland@ljhooker.com.au

LJ Hooker Maitland (02) 4933 5511

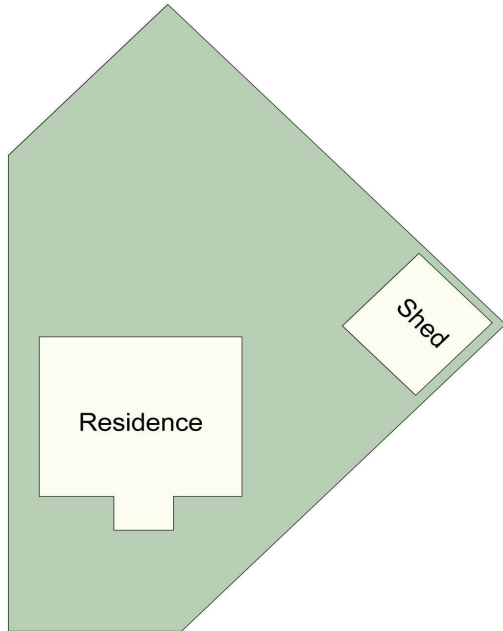
24 Ken Tubman Drive, MAITLAND NSW 2320

maitland.ljhooker.com.au | maitland@ljhooker.com.au

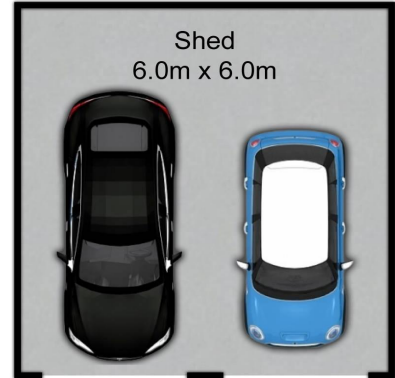


LJ Hooker Maitland
(02) 4933 5511

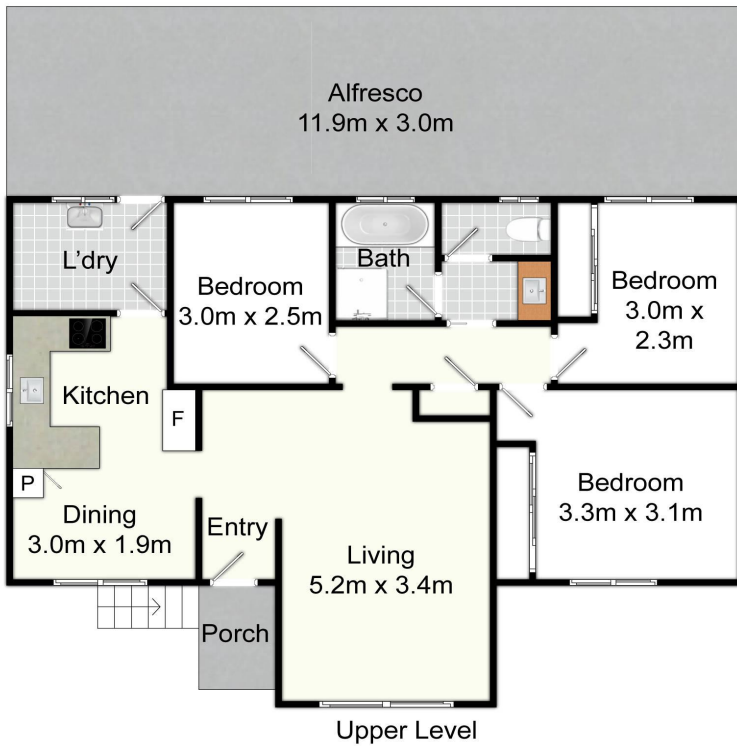
Disclaimer: All information contained therein is gathered from relevant third parties sources. We cannot guarantee or give any warranty about the information provided. Interested parties must rely solely on their own enquiries.



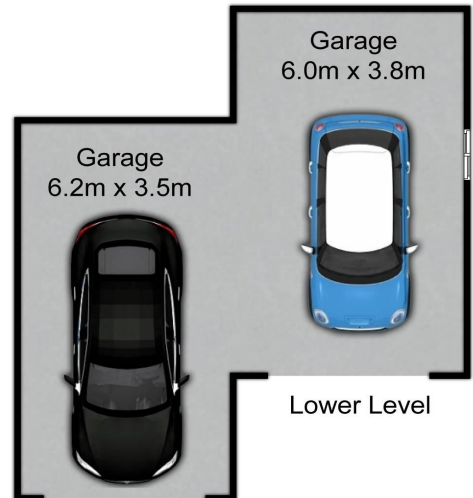
Site Plan
Not To Scale



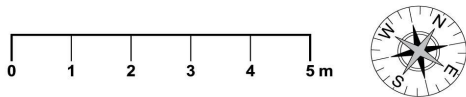
(Not In Position)



Upper Level



Lower Level



4 Cecily Cl, East Maitland

All information contained herein is gathered from sources we deem reliable. However, we cannot guarantee its accuracy and act as a messenger only in passing on the details. Interested parties should rely on their own inquiries and the contract for sale. The floor plans are artist's impressions only. The site plan is not to scale.



LJ Hooker Maitland
(02) 4933 5511

Disclaimer: All information contained therein is gathered from relevant third parties sources. We cannot guarantee or give any warranty about the information provided. Interested parties must rely solely on their own enquiries.