

136 Lawes Street, East Maitland

Live, Work, or Invest in the Heart of East Maitland!

Commanding a prominent corner position just steps from the Lawes Street shopping village, this superbly presented property combines the timeless character we just love about Old School East Maitland homes, with today's modern touches. This property offers you the best of both worlds - be that a through the lense of an owner occupied family home or a bustling business practice - either way, it's an outstanding proposition!

Inside and out, the property showcases all the hallmarks we love to see - wide bullnose verandahs, a classic & commanding street presence, and generous proportions. The kitchen and bathroom are both "walk up ready", and the interiors match - with a clean neutral colour palette, plush carpet & timber flooring and split-system air conditioning to keep the occupants comfortable year round.

The premise has been added onto over the years & the layout caters perfectly to those seeking to establish either Allied Health or professional services, with multiple possible consult rooms, reception spaces, meeting rooms or smaller offices or treatment spaces.

Access and parking are well catered for, with entry available via both

5 1 4

FOR SALE
\$970,000

AGENTS

Todd Fisher
0438 592 920
tfisher.maitland@ljhooker.com.au

Ben Cotton
0434 638 822
bcotton.maitland@ljhooker.com.au

AGENCY

LJ Hooker Maitland
(02) 4933 5511

All information contained therein is gathered from relevant third parties sources.
We cannot guarantee or give any warranty about the information provided.
Interested parties must rely solely on their own enquiries.

LJ Hooker

Lawes and Myra Streets and multiple on-site parking. The future here could also hold either a granny flat or straight subdivision on a new build with the frontage addressing Myra Street.

Set within minutes of the Maitland Hospital, Stockland Green Hills, and public transport links, 136 Lawes Street will be ideal as either a place to call home, an investment or a move-in-ready base for your own operations.

Proudly marketed by LJ Hooker Maitland, please call exclusive agents Todd Fisher 0438 592 920 or Ben Cotton 0434 638 822 - 7 days for all inspections & further information.

All information contained herein is gathered from sources we deem to be reliable. However, we cannot guarantee its accuracy and interested persons should rely on their own enquiries.

MORE DETAILS

Property ID	1EKAF6H
Property Type	House
Land Area	514 m2
Including	Air Conditioning Toilets (1) Close to Schools Close to Shops Close to Transport

Todd Fisher 0438 592 920

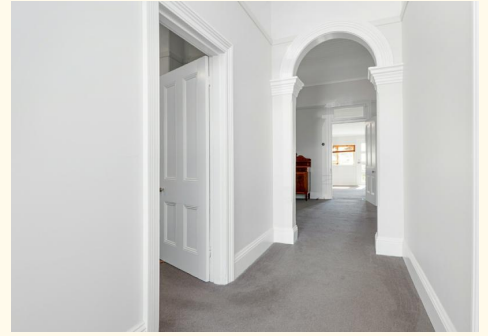
Principal/Licensee in Charge | tfisher.maitland@ljhooker.com.au

Ben Cotton 0434 638 822

Licensed Real Estate Agent & Auctioneer |
bcotton.maitland@ljhooker.com.au

LJ Hooker Maitland (02) 4933 5511

24 Ken Tubman Drive, MAITLAND NSW 2320
maitland.ljhooker.com.au | maitland@ljhooker.com.au



136 Lawes Street, East Maitland



TOTAL: 160 m²
FLOOR 1: 160 m²
EXCLUDED AREAS: YARD/PARKING: 220 m², PORCH: 34 m², WALLS: 10 m²

ALL SIZES, DIMENSIONS & ELEMENTS ARE APPROXIMATE & INTENDED FOR VIEWING PURPOSES ONLY
© 2025 Rite Angle Media - All rights reserved
www.riteanglemedia.com.au



All information contained therein is gathered from relevant third parties sources.
We cannot guarantee or give any warranty about the information provided.
Interested parties must rely solely on their own enquiries.

