



1 Cumberland Street, East Maitland

## A PERIOD CLASSIC!!

Positioned in one of the Hunter's most tightly held pockets, this period weatherboard and iron residence captures the character East Maitland buyers are chasing. Showcased by a wide return verandah it provides great street appeal, this is a home that makes a statement from the moment you arrive.

Inside, high ceilings enhance the sense of space across three generous bedrooms, while the huge lounge room impresses with ornate ceiling detail and a combustion fireplace —the perfect centrepiece for relaxed family living. The large laminate kitchen offers ample cupboard and bench space, seamlessly connecting to the adjoining meals area and flowing out to the rear deck.

Entertaining is effortless with a fantastic undercover timber deck overlooking a fully fenced, spacious backyard complete with single garage —ideal for children, pets, or future enhancements.

Location is everything, and this address delivers, 2 Local schools, primary and secondary are within easy walking distance. Just moments from the new Maitland Hospital, Stockland Green Hills, the vibrant Lawes Street and local train stations providing easy access to Newcastle, convenience here is second to none.

3  1  1 

**FOR SALE**  
GUIDE \$750,000

**VIEW**  
By Appointment

**AGENTS**  
Kane Bradley  
0423 525 335  
kbradley.maitland@ljhooker.com.au

**AGENCY**  
LJ Hooker Maitland  
(02) 4933 5511

All information contained therein is gathered from relevant third parties sources.  
We cannot guarantee or give any warranty about the information provided.  
Interested parties must rely solely on their own enquiries.

 **LJ Hooker**

Currently tenanted, this property presents a compelling opportunity for astute investors while also appealing to first home buyers looking to secure a foothold in premium East Maitland.

Proudly marketed by LJ Hooker Maitland, please call exclusive agent Kane Bradley 0423 525 335 7 days for all inspections & further information.

All information contained herein is gathered from sources we deem to be reliable. However, we cannot guarantee its accuracy and interested persons should rely on their own enquiries.

## MORE DETAILS

Property ID	1EYPF6H
Property Type	House
Land Area	550 m2
Including	Air Conditioning
	Close to Schools
	Close to Shops
	Close to Transport
	Liveability

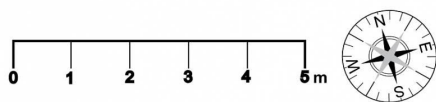
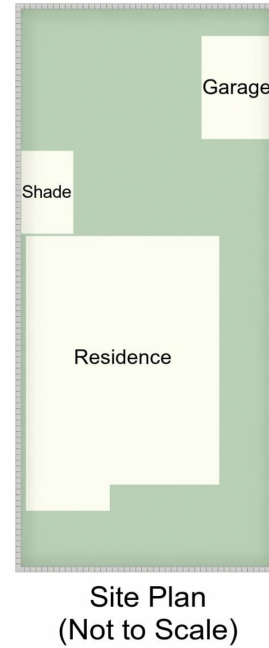
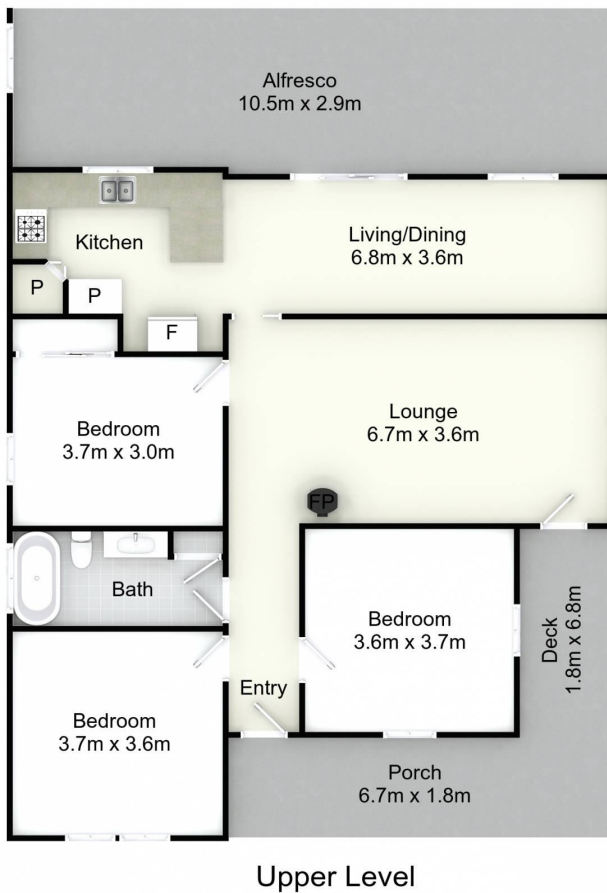
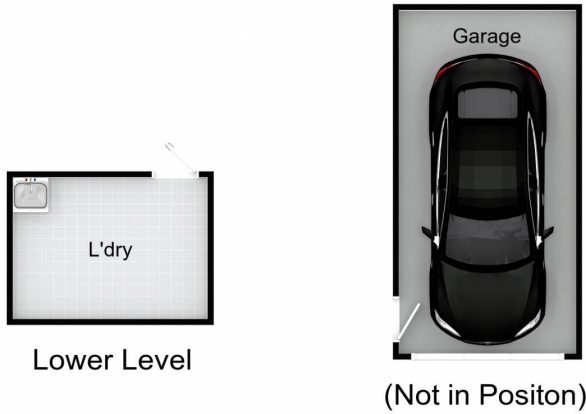
### Kane Bradley 0423 525 335

Director/Licensee in Charge | [kbradley.maitland@ljhooker.com.au](mailto:kbradley.maitland@ljhooker.com.au)

### LJ Hooker Maitland (02) 4933 5511

24 Ken Tubman Drive, MAITLAND NSW 2320  
[maitland.ljhooker.com.au](mailto:maitland.ljhooker.com.au) | [maitland@ljhooker.com.au](mailto:maitland@ljhooker.com.au)





1 Cumberland St, East Maitland

All information contained herein is gathered from sources we deem reliable. However, we cannot guarantee its accuracy and act as a messenger only in passing on the details. Interested parties should rely on their own inquiries and the contract for sale. The floor plans are artist's impressions only. The site plan is not to scale.

 **LJ Hooker**  
Maitland

All information contained therein is gathered from relevant third parties sources. We cannot guarantee or give any warranty about the information provided. Interested parties must rely solely on their own enquiries.

 **LJ Hooker**