

105 Springdale Road, East Killara

Rare Opportunity 936sqm of level, clean land in a prime location

- No access to the tenanted house, site inspection only. Contact Agent for further information.*

Positioned on the prestigious Springdale Road, this residence sits on a prized 935.8sqm level block, offering an exceptional opportunity for future potential and an enviable lifestyle, easy walk to Killara High School, Killara Park, Killara Oval, and express bus services to the city.

The spacious family home is currently tenanted \$2050/week till 04/06/2026

- Sought-after 935.8sqm level block in prestigious tree-lined street
- Updated character home with timeless charm and flexible layout
- Level backyard with basketball half-court and lawn for kids
- Ideal floorplan for in-law accommodation, studio or home office
- Easy level walk to Killara train station for city commuting
- Only 700m (approx.) to Killara High and nearby village shops
- Just 350m to Killara Park and city express bus services
- Minutes to cafes, supermarkets, and Lindfield village

5 5 2

FOR SALE
\$3,800,000-\$4,000,000

VIEW
By Appointment

AGENTS
Jing Peng
0424 262 673
jingpeng@ljhookergordon.com.au

AGENCY
LJ Hooker Gordon
(02) 9496 8000

All information contained therein is gathered from relevant third parties sources. We cannot guarantee or give any warranty about the information provided. Interested parties must rely solely on their own enquiries.

LJ Hooker

conveniences

Outgoings:

Water: \$171 p.q (approx.)

Council: \$872 p.q (approx.)

DISCLAIMER: All information contained herein is gathered from sources that we believe reliable. We have no reason to doubt its accuracy, however we cannot guarantee it. This information is not to be used in formalising any decision nor used by a third party without the expressed written permission of LJ Hooker Gordon.

MORE DETAILS

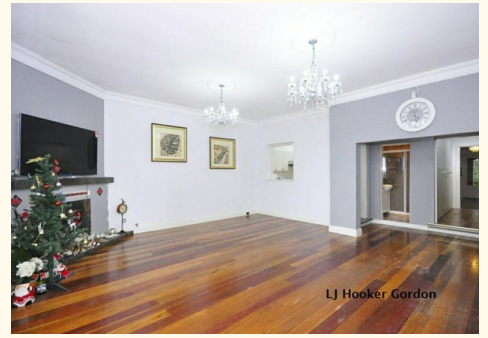
Property ID	T1SHJX
Property Type	House
Land Area	936 m2
Including	Toilets (5)

Jing Peng 0424 262 673

Principal | jingpeng@ljhookergordon.com.au

LJ Hooker Gordon (02) 9496 8000

Shop 1, 777-779 Pacific Highway, GORDON NSW 2072
gordon.ljhooker.com.au | reception@ljhookergordon.com.au



All information contained therein is gathered from relevant third parties sources. We cannot guarantee or give any warranty about the information provided. Interested parties must rely solely on their own enquiries.