



30 White Street, East Gosford


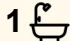
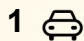
Tranquil Bush Setting

Established in the ever evolving and popular suburb of East Gosford this charismatic, brick and tile residence offers endless opportunities, for the astute buyer looking to purchase in this highly desired suburb.

Enjoying a quiet yet central location and situated on a sun drenched 891sqm backing on to a bush reserve, this immaculately presented family home features:

- Spacious light filled, lounge, living, dining area
- Well equipped kitchen with electric appliances, large pantry, and ample cupboard space
- Two bedrooms all with built in robes with a third bedroom/study option
- Modern family bathroom recently updated
- Elevated private balcony flows of the living area taking in the scenic bush vistas
- Well established gardens to the front and rear of the home
- Single, lock up garage with an abundance of storage space.
- A flexible floorplan that would make a renovation easy to capitalize and extend this amazing home

This is a superb opportunity to make the most of a desirable location with a house that redefines immaculate with a wonderful backdrop.

3  1  1 

FOR SALE
Contact Agent

AGENTS

Simon Hayes
0423 703 062
shayes.eastgosford@ljhooker.com.au

Jamie Goddard
0404 478 076
jgoddard.eastgosford@ljhooker.com.au

AGENCY

LJ Hooker East Gosford
(02) 4322 5522

All information contained therein is gathered from relevant third parties sources.
We cannot guarantee or give any warranty about the information provided.
Interested parties must rely solely on their own enquiries.

 **LJ Hooker**

Conveniently located, you are just a short walk to the popular East Gosford shopping strip, Hylton Moore parkland, Caroline Bay Art Centre, Gosford waterfront & CBD.
For more information contact Simon Hayes, 0423 703 062.

Council Rates: \$1,875.90pa approx.
Water Rates: \$1,184.56pa approx. + usage

MORE DETAILS

Property ID	88PGQR
Property Type	House
Land Area	891.6 m2
Including	Built-in-Robes Ceiling Fans Close to Schools Close to Shops Close to Transport Fire Place

Simon Hayes 0423 703 062

Licensed Real Estate Agent | shayes.eastgosford@ljhooker.com.au

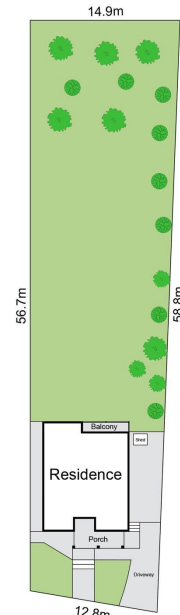
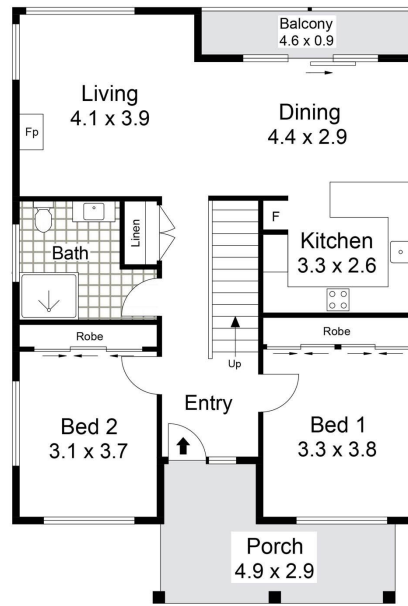
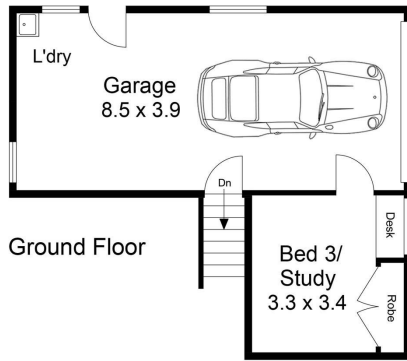
Jamie Goddard 0404 478 076

Licensed Real Estate Agent | jgoddard.eastgosford@ljhooker.com.au

LJ Hooker East Gosford (02) 4322 5522

Suite 5 & 6 Victoria Court, 36-40 Victoria Street, EAST GOSFORD
NSW 2250
eastgosford.ljhooker.com.au | eastgosford@ljhooker.com.au





0 1 2 3 4 5 metres

Scale in metres. Indicative only. Dimensions are approximate. All information contained herein is gathered from sources we believe to be reliable. However we cannot guarantee its accuracy and interested persons should rely on their own enquiries.

INT : 132m²
EXT : 14m² NOT TO SCALE



30 White Street, East Gosford