


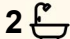
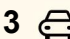


746 Oakland Road, East Coraki

## Cottage Charm with River Front Grazing Land

Situated in the picturesque Coraki region, this unique property offers a blend of charm, potential, and vast open spaces. Located at 746 Oakland Road East, the property features a classic old farmhouse, perfect for those seeking a peaceful rural lifestyle with room to grow. Key Features:

- **Character Farmhouse:** An old-world farmhouse that can be renovated or lived in as is, offering a cozy retreat with plenty of character. The generous home has 4 bedrooms, 2 living spaces, 2 bathrooms, covered verandahs.
- **Stock Yards:** Ample space for livestock with well-established stockyards, ideal for farming and agricultural pursuits.
- **Storage Shed:** A large 3 bay shed providing essential storage or workshop space, perfect for farming equipment or other uses.
- **20 Acres of Fenced Grazing Land:** Fertile land suitable for grazing, offering plenty of space for livestock or agricultural activities.
- **Riverfront Access:** Across the road from the river, providing picturesque views and the potential for water-based activities or peaceful relaxation.
- **Lease Land (9-Year Lease):** An additional 42 acres of land available on a long-term lease, giving you access to vital grazing land and agricultural opportunities. The lease also includes access to river

3  2  3 

**FOR SALE**  
\$750,000 - \$770,000

### AGENTS

Gabrielle Thompson  
0421 029 162  
gthompson.alstonville@ljhooker.com.au

### AGENCY

LJ Hooker Alstonville  
(02) 6628 1163

All information contained therein is gathered from relevant third parties sources.  
We cannot guarantee or give any warranty about the information provided.  
Interested parties must rely solely on their own enquiries.

 **LJ Hooker**

water for stock and domestic, making it perfect for those looking to diversify or expand farming operations.

Total Land Area: 62 acres in total (20 acres freehold land + 42 acres leased land), providing ample space for farming, grazing, or potential development.

Whether you're looking for a working farm, a weekend getaway, or a place to build your dream lifestyle, this property offers an exceptional opportunity to enter the rural market with the benefit of long-term lease options, river access and a second house site STCA.

Contact Gabrielle Thompson to arrange a private inspection and explore the full potential of 746 Oakland Road East Coraki.

## MORE DETAILS

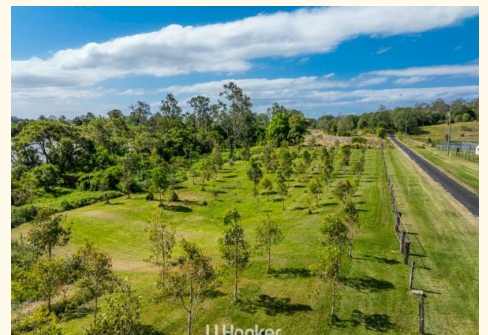
Property ID	16NCF55
Property Type	AcreageSemi-rural
Land Area	20 acre

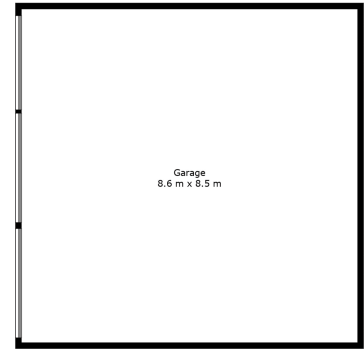
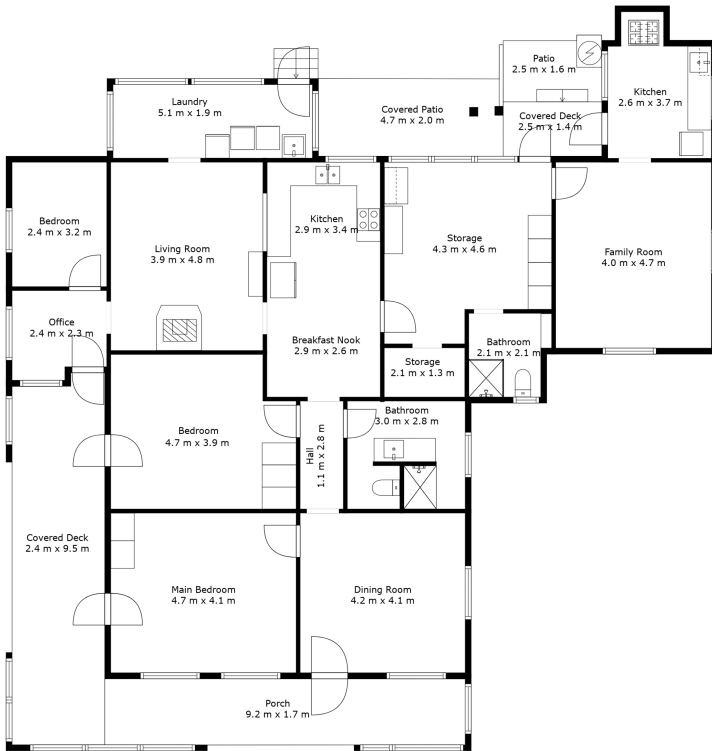
**Gabrielle Thompson 0421 029 162**

Sales Consultant/Licensed Real Estate Agent |  
gthompson.alstonville@ljhooker.com.au

**LJ Hooker Alstonville (02) 6628 1163**

Shop 16 The Plaza, ALSTONVILLE NSW 2477  
alstonville.ljhooker.com.au | alstonville@ljhooker.com.au





## 746 Oakland Road, East Coraki

Disclaimer: For illustrative purpose only Floor plan measurements, size, and scale are approximate we take no responsibility for omission and errors.



All information contained therein is gathered from relevant third parties sources. We cannot guarantee or give any warranty about the information provided. Interested parties must rely solely on their own enquiries.

