

East Cannington, 2/113-115 Renou Street

Modern & Low-Maintenance Villa in a Prime Pocket



Proudly presented by Shagun Ahuja of LJ Hooker Victoria Park - Belmont

Welcome to Unit 2, 113-115 Renou Street, East Cannington—a 2009 built stylish and low-maintenance 3-bedroom, 2-bathroom villa situated in a peaceful group of eight. Offering a perfect combination of comfort, convenience, and modern living, this property is ideal for first-home buyers, downsizers, or investors seeking a well-located gem.

The spacious master bedroom features a walk-in robe and private ensuite, providing a comfortable and private retreat. Bedrooms 2 and 3 are both generously sized with built-in robes and are serviced by a well-appointed common bathroom, perfect for family or guests.

The heart of this home is the open-plan kitchen and living area, where your family will gather to cook, dine, and create lasting memories. With plenty of natural light and a

For Sale
From \$569,000

View
ljhooker.com.au/5FBDFFB

Contact
Shagun Ahuja
0439 399 955
shagun@ljhvicpark.com.au



Disclaimer: All information contained therein is gathered from relevant third parties sources. We cannot guarantee or give any warranty about the information provided. Interested parties must rely solely on their own enquiries.

LJ Hooker Victoria Park | Belmont
(WA)
(08) 9473 7777

functional layout, this space is both inviting and practical. The low-maintenance courtyard is an ideal spot to relax with a cup of tea or host a casual outdoor get-together.

TO MAKE AN OFFER PLEASE COPY THE URL IN YOUR WEB BROWSER AND FOLLOW THE PROMPTS:

<https://prop.ps//UPHn4sEvt1fe>

More Features

- * Built Year: 2009
- * Exceptional Location!
- * Well maintained complex
- * Block Size: 217m2, Internal living Area: App. 117m2(excluding garage & storeroom)
- * AWESOME Lifestyle!
- * Open plan living/kitchen/dining area
- * Double lock up garage
- * Easy access to nearby public transport
- * Private, Low Maintenance & Secure
- * 6.6kw Solar Panels to save \$\$\$
- * Energy Saving Downlights throughout
- * Modern Laminate flooring to all bedrooms
- * Rental Appraisal - \$670 - \$690 per week

Outgoings:

- * Council Rates: \$1,825 per annum
- * Water Rates: \$1,173 per annum
- * Strata Levies: \$412.50 PER Qtr

Situated in a convenient pocket of East Cannington, this villa is just a 5-minute drive from Westfield Carousel, giving you access to a wide range of shopping, dining, and entertainment options. It's also just 10 minutes from Perth Airport and approximately 20 minutes to the Perth CBD, making commuting and travel a breeze.

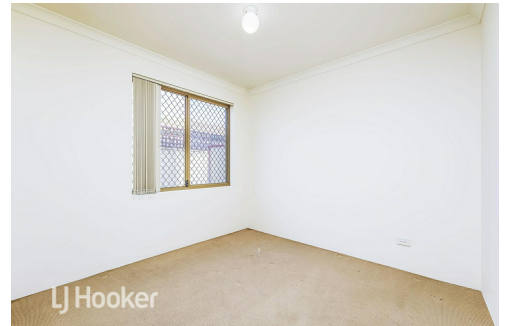
If you're looking for a modern, easy-care home in a prime location, Unit 2, 113-115 Renou Street is the perfect choice.

More About this Property

Property ID	5FBDFFB
Property Type	Villa

Shagun Ahuja 0439 399 955
Sales Consultant | shagun@ljhvicpark.com.au

LJ Hooker Victoria Park | Belmont (WA) (08) 9473 7777
288 Albany Highway, VICTORIA PARK WA 6100
victoriapark-belmontwa.ljhooker.com.au | reception@ljhvicpark.com.au



Disclaimer: All information contained therein is gathered from relevant third parties sources. We cannot guarantee or give any warranty about the information provided. Interested parties must rely solely on their own enquiries.

LJ Hooker Victoria Park | Belmont (WA) (08) 9473 7777