

## East Bunbury, 9 Perry Place

Prime Location, Endless Potential, Ultimate Convenience

Don't miss the opportunity to own this charming 3-bedroom home, perfectly positioned in East Bunbury across from Coverley Park and just moments away from Bunbury Forum Shopping Centre and Bunbury CBD.

Enjoy the benefits of a spacious flat block of land, complete with established fruit trees and an expansive patio ideal for year-round entertaining.

Features Include:

- Three generously sized bedrooms
- Oversized semi-ensuite with toilet
- Multiple living areas for the whole family to enjoy
- Cozy wood fireplace for those cold winter days
- Efficient split system air conditioning
- Ceiling fans in all bedrooms



**Disclaimer:** All information contained therein is gathered from relevant third parties sources. We cannot guarantee or give any warranty about the information provided. Interested parties must rely solely on their own enquiries.



**For Sale**  
Please Call

**View**  
[ljhooker.com.au/1641HND](http://ljhooker.com.au/1641HND)

**Contact**  
**Rebecca Maskell**  
0437 085 992  
[rebecca.maskell@ljhsouthwest.com.au](mailto:rebecca.maskell@ljhsouthwest.com.au)

**Daniel White**  
0429 086 856  
[daniel.white@ljhsouthwest.com.au](mailto:daniel.white@ljhsouthwest.com.au)

**LJ Hooker Property South West WA**  
**(08) 9791 6880**



- Additional toilet in the laundry
- Charming park views
- Expansive patio area for all your entertaining needs
- Convenient carport with electric roller door
- Garden shed for extra storage
- Immense potential

Don't miss out on this fantastic opportunity to create your dream home in a prime location! Contact Rebecca Maskell on 0437 085 992 if you would like further information or to arrange a viewing.

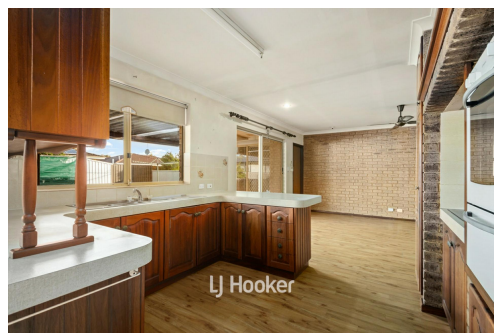
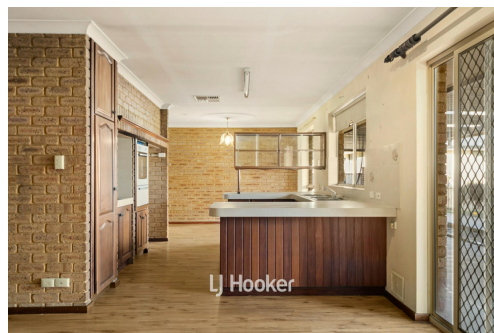
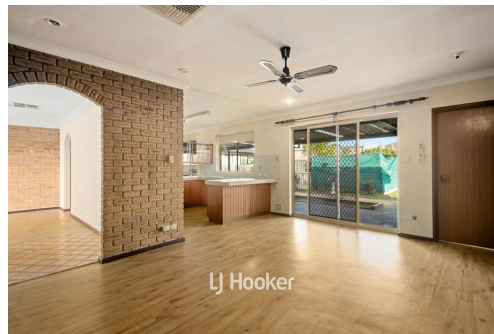
Disclaimer: Whilst every care has been taken in the preparation of this advertisement and the approximate outgoings, all information supplied by the seller and the seller's agent is provided in good faith. Prospective purchasers are encouraged to make their own enquiries to satisfy themselves on all pertinent matters. Images are for illustrative purposes.

## More About this Property

Property ID	1641HND
Property Type	House
House Size	120 m²
Land Area	770 m²

**Rebecca Maskell 0437 085 992**  
 Sales Consultant | [rebecca.maskell@ljhsouthwest.com.au](mailto:rebecca.maskell@ljhsouthwest.com.au)  
**Daniel White 0429 086 856**  
 Sales Consultant | [daniel.white@ljhsouthwest.com.au](mailto:daniel.white@ljhsouthwest.com.au)

**LJ Hooker Property South West WA (08) 9791 6880**  
 130 Victoria Street, BUNBURY WA 6230  
[southwestwa.ljhooker.com.au](http://southwestwa.ljhooker.com.au) | [bunbury@ljhsouthwest.com.au](mailto:bunbury@ljhsouthwest.com.au)



**Disclaimer:** All information contained therein is gathered from relevant third parties sources. We cannot guarantee or give any warranty about the information provided. Interested parties must rely solely on their own enquiries.

**LJ Hooker Property South West WA**  
**(08) 9791 6880**

## 9 PERRY PLACE, EAST BUNBURY, WA 6230



Disclaimer: Floor Plan measurements are approximate and are for illustrative purposes only. While we do not doubt the floor plans accuracy, we make no guarantee, warranty or representation as to the accuracy and completeness of the floor plan.



LJ Hooker Property South West WA  
(08) 9791 6880

**Disclaimer:** All information contained therein is gathered from relevant third parties sources.  
We cannot guarantee or give any warranty about the information provided. Interested parties must rely solely on their own enquiries.