

65A Hayes Street, East Bunbury

Modern Lock & Leave Living in the Heart of East Bunbury

Imagine finishing work on Friday locking the front door and heading away for the weekend without a second thought.

No lawns demanding attention. No weekends spent on endless maintenance. Just a beautifully presented home offering the perfect balance of comfort, convenience and an easy care lifestyle.

Tucked away in a private rear position, this modern three bedroom, two bathroom residence is ideal for those seeking a low maintenance home without compromising on space. Whether you are downsizing, investing, buying your first home or searching for the perfect lock and leave property, this home is designed to make life easy.

Step inside to discover a light filled open plan living and dining area where large windows and neutral tones create a warm and inviting atmosphere. The well appointed kitchen is perfectly positioned to overlook the living space and features generous bench space, walk in pantry, quality appliances, ample storage and a breakfast bar, making it equally suited to everyday living and entertaining.

The spacious master suite is privately positioned and offers a walk in

3 2 2

FOR SALE

Offers From \$819,000

VIEW

By Appointment

AGENTS

Matt Blackford

0405 919 121

Matt.Blackford@ljhsouthwest.com.au

Melanie Shorter

0423 943 472

Melanie.Shorter@ljhsouthwest.com.au

AGENCY

LJ Hooker Property South West WA
(08) 9791 6880

All information contained therein is gathered from relevant third parties sources.
We cannot guarantee or give any warranty about the information provided.
Interested parties must rely solely on their own enquiries.

LJ Hooker

robe and ensuite, while bedrooms two and three are well proportioned with built in robes and are serviced by the family bathroom complete with a full sized bath and separate shower.

Sliding doors extend the living area to a covered alfresco, providing the perfect space to enjoy your morning coffee, unwind after work or entertain family and friends in complete privacy. With minimal gardens to maintain, you will spend more time enjoying your home and less time working in it.

Located within walking distance to the picturesque Leschenault Inlet foreshore and Bunbury's CBD, cafes, restaurants, schools, shopping, medical facilities, this outstanding location offers a lifestyle of convenience where everything you need is just moments away.

If you are looking for modern living, a sought after location and the freedom of a true lock and leave lifestyle, 65A Hayes Street is one you will want to inspect.

Features you Will love:

- . Private rear 3 bedroom, 2 bathroom home
- . Spacious open plan living and dining area
- . Well appointed kitchen with ample bench and storage space
- . Master bedroom with walk in robe and ensuite
- . Built in robes to bedrooms two and three
- . Reverse cycle air conditioning to the main living area
- . Covered alfresco for year-round entertaining
- . Easy care, low maintenance block
- . Ideal lock-and-leave lifestyle

Disclaimer: whilst every care has been taken in the preparation of this advertisement and the approximate outgoings, all information supplied by the seller and the seller's agent is provided in good faith. Prospective purchasers are encouraged to make their own enquiries to satisfy themselves on all pertinent matters. Images are for illustrative purposes.

MORE DETAILS

Property ID	1AX5HND
Property Type	House
House Size	122 m2
Land Area	316 m2
Including	Ensuite Air Conditioning Toilets (2) Dishwasher Outdoor Entertaining Built-in-Robes Fully Fenced

Matt Blackford 0405 919 121

Sales Consultant â€” Collie | Matt.Blackford@ljhsouthwest.com.au

Melanie Shorter 0423 943 472

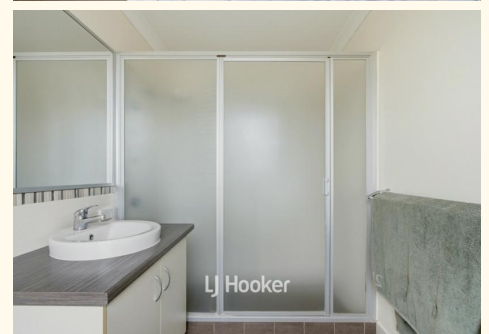
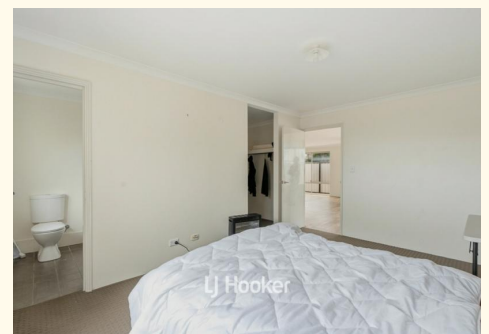
Sales Assistant to Matt Blackford |

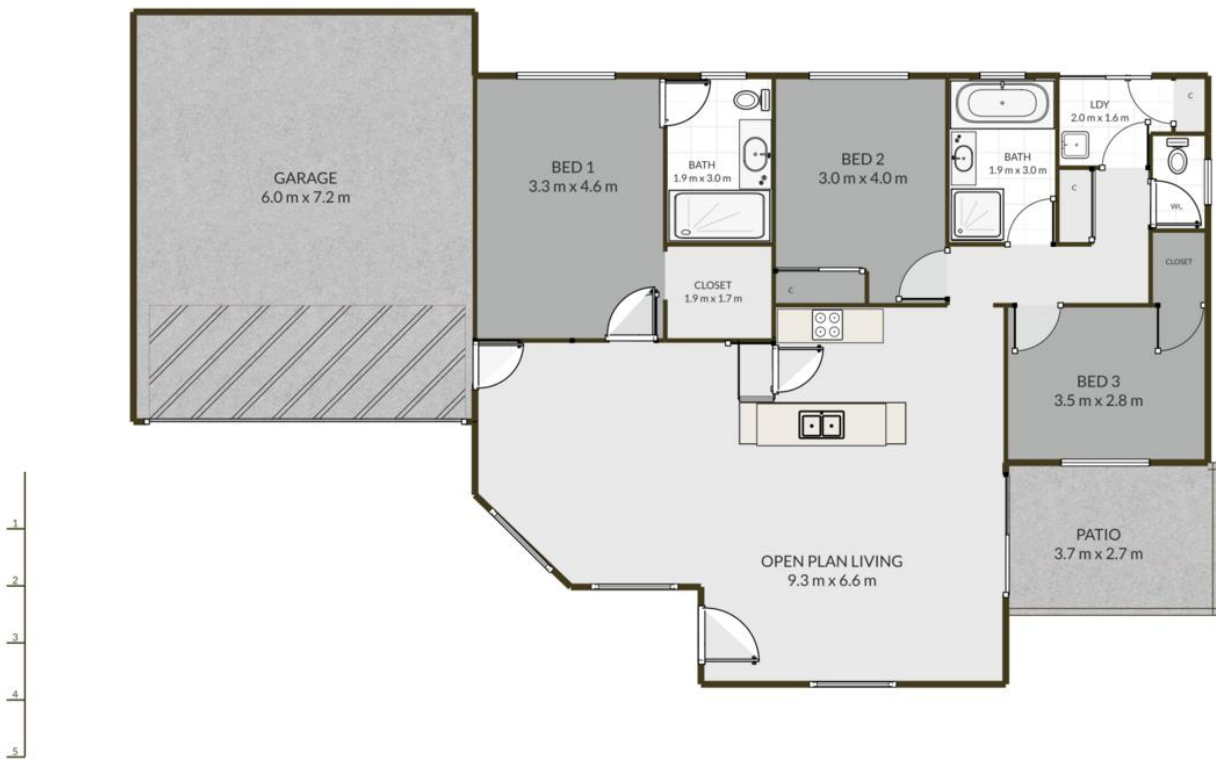
Melanie.Shorter@ljhsouthwest.com.au

LJ Hooker Property South West WA (08) 9791 6880

130 Victoria Street, BUNBURY WA 6230

southwestwa.ljhooker.com.au | bunbury@ljhsouthwest.com.au





Matt Blackford
0405 919 121



65 Hayes Street, East Bunbury, WA 6230



TOTAL: 168 m2

THIS FLOOR PLAN HAS BEEN PREPARED BY EVENTUALLY CREATIVE. WHILE ALL MEASUREMENTS ARE CONSIDERED RELIABLE, THEY ARE NOT GUARANTEED AND SHOULD BE INDEPENDENTLY VERIFIED. THIS FLOOR PLAN IS COPYRIGHT PROTECTED AND CANNOT BE REPRODUCED, MODIFIED, OR USED WITHOUT THE PERMISSION OF EVENTUALLY CREATIVE.



All information contained therein is gathered from relevant third parties sources. We cannot guarantee or give any warranty about the information provided. Interested parties must rely solely on their own enquiries.

