

East Bunbury, 13 North Street

Stunning 4-Bedroom Family Home with Modern Comforts & Period Elegance

Discover this exceptional 4-bedroom, 2-bathroom family residence, where modern living meets timeless charm. Situated on a sprawling 897sqm lot, this home has been thoughtfully designed to offer both comfort and style, making it perfect for families seeking space, versatility, and a touch of character.

As you step inside, you'll be greeted by high ceilings, ornate cornices, and beautifully polished timber floors that reflect the home's rich heritage. The generously sized living areas are bathed in natural light, creating an inviting and warm atmosphere that's perfect for both everyday living and entertaining.

At the heart of the home is a modern, well-appointed kitchen featuring stainless steel appliances, ample storage, and sleek finishes. Whether preparing meals for family dinners or hosting guests, this kitchen will meet all your culinary needs.



For Sale

Guiding low to mid \$1m

View

By Appointment

Contact

Simon Bushell

0411 929 198

simon.bushell@ljhsouthwest.com.au



LJ Hooker Property South West WA
(08) 9791 6880

Disclaimer: All information contained therein is gathered from relevant third parties sources. We cannot guarantee or give any warranty about the information provided. Interested parties must rely solely on their own enquiries.

The updated bathrooms exude contemporary elegance with their clean lines and high-end fixtures, adding a luxurious touch to your daily routine.

Ducted reverse cycle air-conditioning ensures year-round comfort, keeping you cool in the summer and cozy during the winter months. The home's flowing layout effortlessly extends outdoors to an impressive timber decked, raked ceiling alfresco area, offering an ideal setting for outdoor dining and relaxation. This space is perfect for entertaining friends, enjoying a family BBQ, or simply unwinding in the peaceful surrounds of your own backyard.

Beyond the alfresco, the large patio opens to a beautifully landscaped garden. For those who enjoy working with their hands or need additional storage, a rear workshop is perfect for DIY projects, hobbies, or housing tools and equipment. It's a fantastic space for anyone looking to indulge their creative side or seeking a private, functional retreat.

Situated at the front of the residence extending immediately from the dining area is another timber decked alfresco with an east facing aspect, perfect for an afternoon drink or evening meal whilst the children play on the lawn which is secured by the charming white picket fence.

The double garage provides secure parking for two vehicles, while a dedicated boat or caravan shelter adds extra convenience for adventurers or those with recreational vehicles.

Located in a sought-after neighbourhood of East Bunbury, this home is within easy reach of local schools, shopping centres, parks, and transport options, offering the perfect combination of convenience and tranquillity.

Offering an extraordinary blend of period charm and modern amenities, this home is truly a rare find. With its spacious interiors, expansive outdoor areas, and superb location, it's an ideal setting for families who value space, comfort, and a home filled with character.

Don't miss the opportunity to call this stunning property your own. Contact Simon Bushell — 0411 929 198 today to arrange a private inspection and experience the charm and luxury of this remarkable home firsthand!

More About this Property

Property ID	183GHND
Property Type	House
House Size	219 m2
Land Area	897 m2

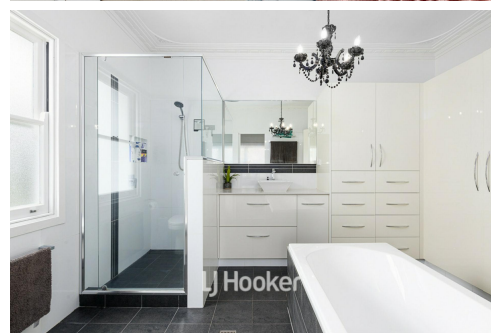
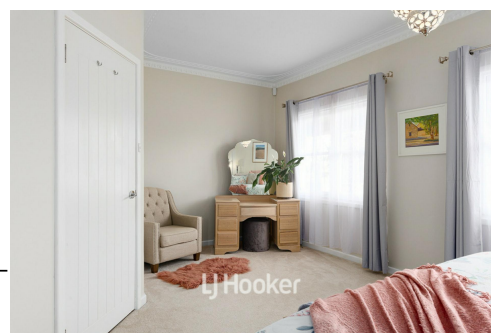
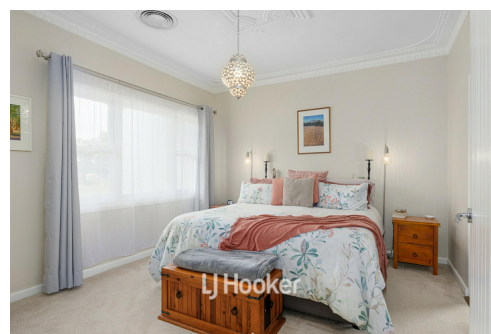
Simon Bushell 0411 929 198

Sales Consultant | simon.bushell@ljhsouthwest.com.au

LJ Hooker Property South West WA (08) 9791 6880

130 Victoria Street, BUNBURY WA 6230

southwestwa.ljhooker.com.au | bunbury@ljhsouthwest.com.au



**LJ Hooker Property South West WA
(08) 9791 6880**

Disclaimer: All information contained therein is gathered from relevant third parties sources. We cannot guarantee or give any warranty about the information provided. Interested parties must rely solely on their own enquiries.



Please note this floor plan is for marketing purposes and is to be used as a guide only. Measurements are approximate and are for illustrative purposes only.