

East Brisbane, 1/23 Heidelberg Street

LARGE COURTYARD, CONVENIENT LOCATION!!

Located in a quiet tree lined street, surrounded by Character Queenslanders this ground-floor unit is hitting the market for the first time in 20 years. If outdoor space is high on your list, then look no further!

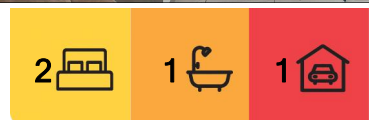
With two bedrooms, open plan kitchen, dining and living area, you can take full advantage of the Queensland weather all year-round with indoor out door living. Living here you are a short walk to transport, restaurants, cafes and the Brisbane river.

Features include:

- Large grassed courtyard
- Air-conditioned living area
- Single garage
- Body corporate \$4,551 inc insurance
- Previously rented \$510 pw



Disclaimer: All information contained therein is gathered from relevant third parties sources. We cannot guarantee or give any warranty about the information provided. Interested parties must rely solely on their own enquiries.



For Sale
OPEN TO OFFERS

View
l.jhooker.com.au/1D06F4N

Contact
Nathan Johnson
0434 101 821
nathan.johnson@l.jhooker.com.au

LJ Hooker Stafford
(07) 3357 1888

Walk to Mowbray Park, The Gabba and much more

Suited to first time buyers or investors, this unit is going to tick all the boxes.

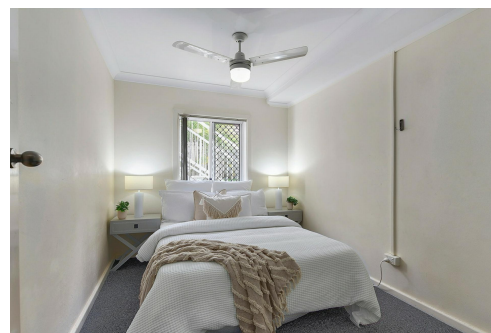
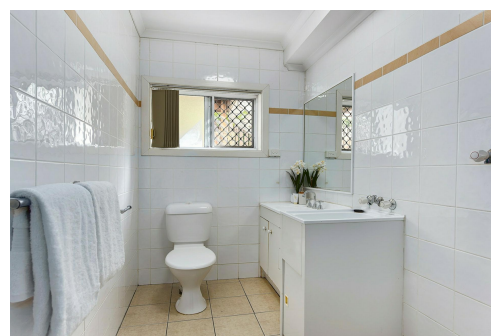
Contact Nathan Johnson 0434 101 821 for further details.

More About this Property

Property ID	1D06F4N
Property Type	Unit

Nathan Johnson 0434 101 821
Sales & Marketing Consultant | nathan.johnson@ljhooker.com.au

LJ Hooker Stafford (07) 3357 1888
205 Stafford Road, STAFFORD QLD 4053
stafford.ljhooker.com.au | stafford@ljhooker.com.au



Disclaimer: All information contained therein is gathered from relevant third parties sources.
We cannot guarantee or give any warranty about the information provided. Interested parties must rely solely on their own enquiries.

LJ Hooker Stafford
(07) 3357 1888



**1/23 Heidelberg St,
East Brisbane**



FLOOR AREA SIZES

Internal	58.7m ²
External	34.0m ²
Garage	18.7m ²
TOTAL	111.4m²

Whilst every attempt has been made to ensure the accuracy of the floor plans contained here, measurements of doors, windows, rooms and any other items are approximate and no responsibility is taken for any error, omission or misstatement.

These plans are for representation purposes only. Provided by primapiex.com.au