

East Bairnsdale, Unit 1/12 Patricia Street

TOWN HOUSE NEAR HOWITT PARK

Tucked away in a private setting on Patricia Street, this spacious townhouse stands out with its unique double-storey design. North-facing and filled with natural light, the downstairs level features the kitchen, living area, main bedroom with ensuite, study, and garage, all thoughtfully positioned to create a bright and welcoming atmosphere. Upstairs, two additional bedrooms and a bathroom capture lovely views across to Howitt Park, enhancing the sense of space and outlook. With its peaceful location close to the oval and the Mitchell River, this home combines convenience with comfort in one of the area's most desirable spots.

3 

2 

1 

For Sale
\$565,000

View
By Appointment

Contact
Kylie Smith
0409 530 842
ksmith@ljhookerbairnsdale.com.au



Disclaimer: All information contained therein is gathered from relevant third parties sources. We cannot guarantee or give any warranty about the information provided. Interested parties must rely solely on their own enquiries.

LJ Hooker Bairnsdale
(03) 5152 4172

More About this Property

| | |
|---------------|---|
| Property ID | 18EFFBF |
| Property Type | Unit |
| Land Area | 238 m2 |
| Including | Ensuite Air Conditioning Toilets (2) Courtyard Dishwasher Secure Parking Fully Fenced |

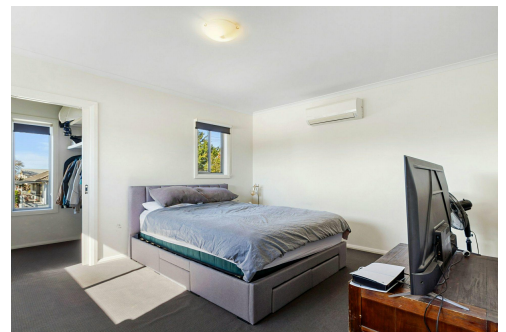
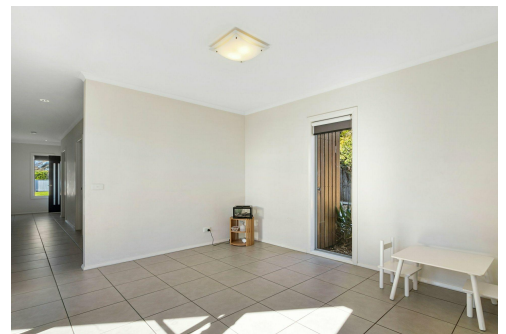
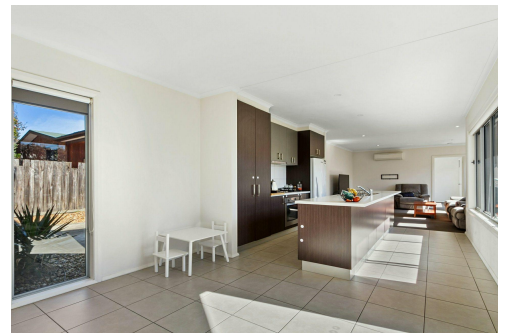
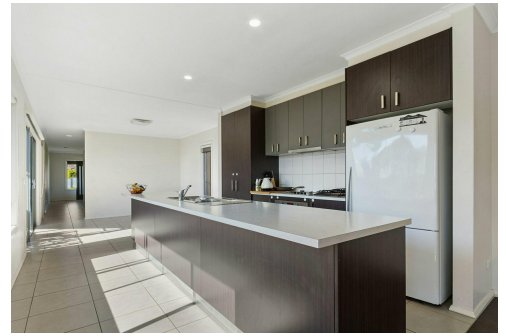
Kylie Smith 0409 530 842

Sales Consultant | ksmith@ljhookerbairnsdale.com.au

LJ Hooker Bairnsdale (03) 5152 4172

195 Main Street, BAIRNSDALE VIC 3875

bairnsdale.ljhooker.com.au | bairnsdale@ljhookerbairnsdale.com.au



Disclaimer: All information contained therein is gathered from relevant third parties sources. We cannot guarantee or give any warranty about the information provided. Interested parties must rely solely on their own enquiries.

LJ Hooker Bairnsdale
(03) 5152 4172