

## Earlville, 35 Granadilla Drive

Ma Nu.

Embracing Tropical resort-style design concepts to capture the city and mountain views and cool breezes, every day will feel like a vacation living in Ma Nu.

This bespoke home has created an outdoor living paradise backing onto a tree Reserve.

This transitional space is anchored by a serene pool framed by elegant landscaping. The outdoor living space with multiple zones emphasizes the natural beauty of the surrounding area while offering all the advantages and comfort of indoor amenities including a spacious bar and pool table area finished in local timbers, separate BBQ pavilion and a freestanding jacuzzi. This area is serviced by an office/bedroom and bathroom.

The living quarters of this home have been thoughtfully designed with family and guests in mind. Constructed of solid concrete and rendered block over three levels, the top floor offers the dedicated parents retreat, well-appointed kitchen and open plan living and dining



**Disclaimer:** All information contained therein is gathered from relevant third parties sources. We cannot guarantee or give any warranty about the information provided. Interested parties must rely solely on their own enquiries.



**For Sale**  
Please Call

**View**  
[ljhooker.com.au/3R9AFMB](http://ljhooker.com.au/3R9AFMB)

**Contact**  
**Nadine Edwards**  
0423 602 606  
[nedwards@ljheh.com.au](mailto:nedwards@ljheh.com.au)

**Kayla Pennefather**  
0429 364 945  
[kaylap@ljheh.com.au](mailto:kaylap@ljheh.com.au)

**LJ Hooker Cairns Edge Hill**  
**(07) 4053 9999**

area (complete with powder room). The middle floor offers an additional 3 double bedrooms and bathroom. The first floor offers a spacious studio flat with its own kitchenette, external shower and separate entrance.

Set on a 1,123m<sup>2</sup> block of land extra features completing Ma Nu include:

- Air-conditioning
- 9kW solar panels and solar hot water
- Ample storage options
- Double carport plus additional off-street parking

Within close proximity of some of the best primary and secondary schools in Cairns, Earlville Shopping Town, local shops, public transport and local parklands.

Homes with these proportions, functional layout and views are not readily available in such a desirable address, this is a not to be missed opportunity for the discerning buyer. Call to arrange your inspection today!

## More About this Property

<b>Property ID</b>	3R9AFMB
<b>Property Type</b>	House
<b>Land Area</b>	1123 m <sup>2</sup>
<b>Including</b>	Ensuite Study Air Conditioning Pool Spa Deck Dishwasher Outdoor Entertaining Floorboards Built-in-Robes Solar Panels Solar Hot Water 9KW Solar     Granny Flat/Stdio Flat

**Nadine Edwards 0423 602 606**

Director | nedwards@ljheh.com.au

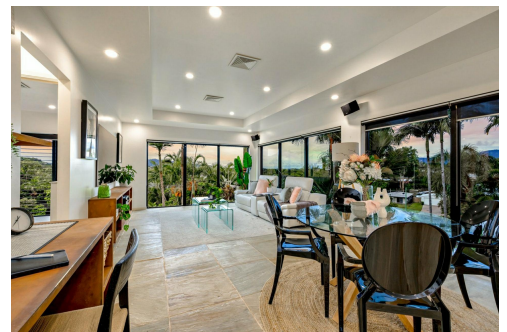
**Kayla Pennefather 0429 364 945**

Sales Associate to Nadine Edwards | kaylap@ljheh.com.au

**LJ Hooker Cairns Edge Hill (07) 4053 9999**

81 - 83 Woodward Street, EDGE HILL QLD 4870

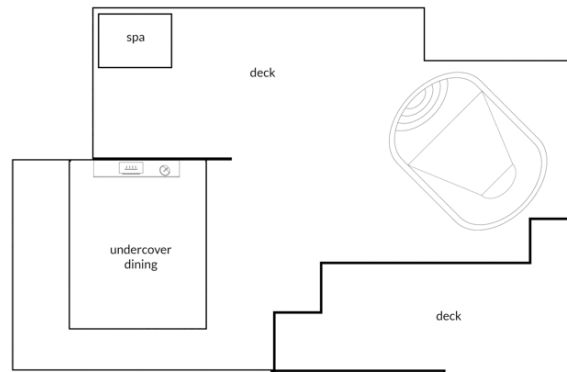
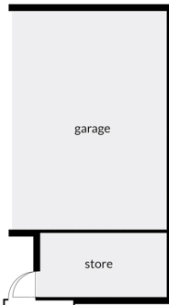
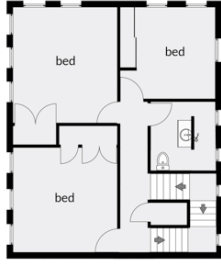
cairnsedgehill.ljhooker.com.au | cairnsedgehill@ljheh.com.au



**LJ Hooker Cairns Edge Hill  
(07) 4053 9999**

**Disclaimer:** All information contained therein is gathered from relevant third parties sources. We cannot guarantee or give any warranty about the information provided. Interested parties must rely solely on their own enquiries.

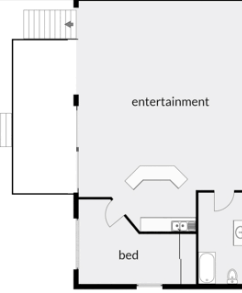
Middle level.



Bottom level.



Top level.



THIS FLOORPLAN IS PROVIDED WITHOUT WARRANTY OF ANY KIND. J CREATE DISCLAIMS ANY WARRANTY INCLUDING, WITHOUT LIMITATION, SATISFACTORY QUALITY OR ACCURACY OF DIMENSIONS.