

## Earlville, 27 Watson Street

### Charming Lowset Queenslander & Tropical Oasis with Pool & Modern Comforts

Set on 645m<sup>2</sup>, this well-maintained lowset Queenslander seamlessly blends timeless charm with modern convenience & offering a relaxed lifestyle in a highly desirable location.

From the moment you enter, the home radiates warmth and character with its classic casement windows, timber floors, and banks of plantation shutters that invite natural light and cooling breezes to circulate throughout.

A spacious, open-plan living and dining area extends to the front balcony & the perfect spot to unwind or entertain, all while enjoying the aspect of the sparkling in-ground pool.

A separate enclosed patio the full length of the home with polished concrete floors



**Disclaimer:** All information contained therein is gathered from relevant third parties sources. We cannot guarantee or give any warranty about the information provided. Interested parties must rely solely on their own enquiries.



#### Auction

Sat 24th May @ 9:30AM

#### View

Sat 10th May @ 12:30PM - 1:00PM

#### Contact

**Nadine Edwards**

0423 602 606  
nedwards@ljheh.com.au

**Harriet Donnelly**

0417 160 171  
harriet@ljheh.com.au

**LJ Hooker Cairns Edge Hill**  
(07) 4053 9999

functions as a second huge living space - ideal for entertaining or relaxing all year around.

The heart of the home is a well-appointed kitchen featuring stainless steel appliances, island bench and ample storage options &ndash; ideally positioned to cater to both indoor and outdoor living.

Offering three generously sized bedrooms and two modern bathrooms, including a master suite with ensuite.

With full air-conditioning throughout, an internal laundry, and abundant storage, this home combines heritage charm with everyday functionality.

Outdoors, the home continues to impress with landscaped gardens, a separately fenced in-ground pool, and a fully fenced yard with plenty of level lawn for children and pets to enjoy. Double car accommodation (via side vehicle access) plus separate freestanding carport ideal for additional vehicles/boat/camper trailer completes the package.

Positioned in a convenient central location within close proximity to Earlvile Shopping Town, local shops, parklands, sought-after schools and kindergartens plus public transport, this property offers the perfect balance of peaceful living and urban convenience.

This stylish residence is ready for its next chapter &ndash; move in, relax, and enjoy the lifestyle on offer. Inspect today!.

Auction On Site & Online Via Realtair.

24/05/2025 at 9:30am

**\*\*Offers considered prior to Auction\*\***

This property is being sold by auction or without a price and therefore a price guide cannot be provided. The website may have filtered the property into a price bracket for website functionality purposes



**LJ Hooker Cairns Edge Hill  
(07) 4053 9999**

**Disclaimer:** All information contained therein is gathered from relevant third parties sources. We cannot guarantee or give any warranty about the information provided. Interested parties must rely solely on their own enquiries.



## More About this Property

<b>Property ID</b>	3X83FMB
<b>Property Type</b>	House
<b>Land Area</b>	645 m2
<b>Including</b>	Ensuite Air Conditioning Pool Deck Floorboards Built-in-Robes Fully Fenced

**Nadine Edwards 0423 602 606**

Director | nedwards@ljheh.com.au

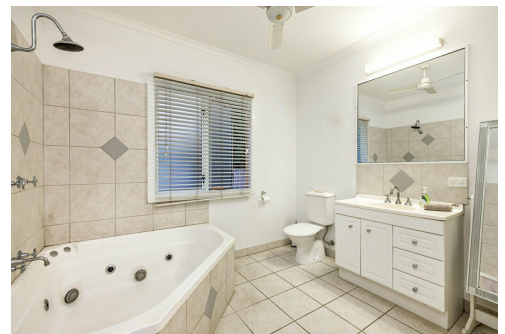
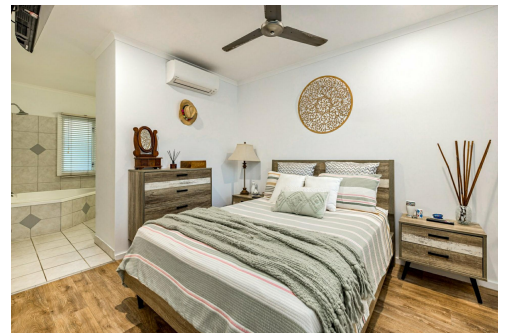
**Harriet Donnelly 0417 160 171**

Sales Associate to Nadine Edwards | harriet@ljheh.com.au

**LJ Hooker Cairns Edge Hill (07) 4053 9999**

81 - 83 Woodward Street, EDGE HILL QLD 4870

cairnsedgehill.ljhooker.com.au | cairnsedgehill@ljheh.com.au



**Disclaimer:** All information contained therein is gathered from relevant third parties sources. We cannot guarantee or give any warranty about the information provided. Interested parties must rely solely on their own enquiries.

**LJ Hooker Cairns Edge Hill  
(07) 4053 9999**