



Eagleby, 11/147-153 Fryar Road

Location Goals, Lifestyle Wins!

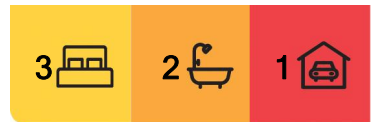
Positioned in a quiet, well-maintained complex, this light-filled townhouse offers the ideal blend of low-maintenance living and modern comfort. With a functional two-storey layout, generous interiors, and a private courtyard retreat, 11/147-153 Fryar Road presents a fantastic opportunity for both investors and owner-occupiers to secure a quality home in a growth-focused suburb. Whether you're upsizing, downsizing, or portfolio building - this one is packed with value from every angle.

Nestled in the ever-growing suburb of Eagleby, you're perfectly positioned between Brisbane and the Gold Coast, offering a relaxed lifestyle with unbeatable access to schools, parks, shops, and public transport. With nature reserves nearby and local favourites like Eagleby Shopping Centre just around the corner, you'll enjoy the perfect blend of urban ease and leafy tranquillity.

Your New Property Features



Disclaimer: All information contained therein is gathered from relevant third parties sources. We cannot guarantee or give any warranty about the information provided. Interested parties must rely solely on their own enquiries.



For Sale
Offers Over \$539,000

View
By Appointment

Contact
Benjamin Waite
0431 265 700
sales1@ljhbeenleigh.com.au

LJ Hooker Beenleigh
(07) 3807 7900

- Three Generous Bedrooms: All situated upstairs, including a master with walk-in robe and private ensuite, plus ceiling fans throughout for year-round comfort.
- Spacious Multi-Purpose Room: A fantastic bonus space perfect for a home office, study zone, or kids' play area.
- Open-Plan Living: Downstairs boasts a light-filled tiled living and dining zone that flows effortlessly from the modern kitchen.
- Functional Kitchen: Equipped with electric cooktop, stainless steel oven, dishwasher, ample cabinetry, and a wide window offering natural light and garden views.
- Air Conditioning & Ceiling Fans: Stay cool and comfortable with split system air-con in the living and master bedroom.
- Modern Bathrooms: Main bathroom with shower and bathtub, plus a tidy ensuite off the master and a convenient downstairs powder room.
- Private Courtyard: A peaceful, fully fenced outdoor space with garden beds, seating area, clothesline, and large water tank - great for entertaining or unwinding in nature.
- Secure Lock-Up Garage: Internal access, plus driveway space and visitor parking throughout the complex.
- Peaceful End Position: Located at the end of a quiet row, enhancing privacy and offering extra light and greenery.
- Pool & BBQ Area: Shared swimming pool and BBQ area - perfect for those hot summer weekends, relaxation or entertaining with friends

Your Investment Figures

- Rental Appraisal: Approx. \$470-\$520 per week, ideal for generating strong returns
- Tenanted: Already occupied, offering instant income for investors
- Body Corporate: Approx. \$937 per Quarter
- Rates: Approx. \$950 per Quarter
- Transport & Amenities: 170m to bus stop, 2.4km to shopping center, 2.8km to train station - seamless connectivity for residents

Whether you're investing, downsizing, or stepping into the property market, this townhouse combines contemporary living with exceptional convenience in one of Logan's most dynamic growth corridors. Reach out today to schedule a viewing or discuss how this property could be your next great investment - opportunities like this don't last long!

More About this Property

Property ID	1WVZGRF
Property Type	Townhouse
House Size	124 m2
Land Area	127 m2

Benjamin Waite 0431 265 700

Licensed Real Estate Agent | sales1@ljhbeenleigh.com.au

LJ Hooker Beenleigh (07) 3807 7900

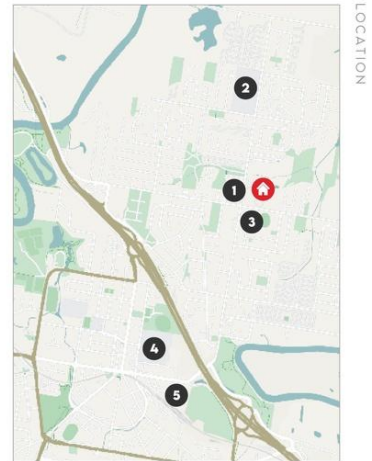
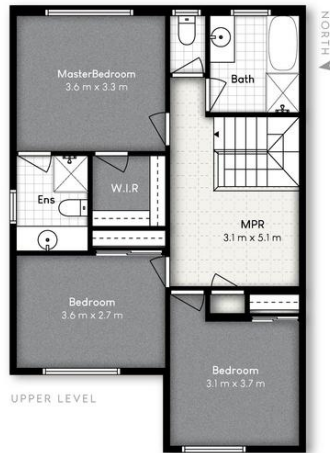
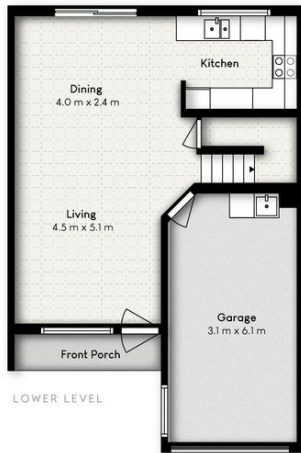
14-16 James Street, BEENLEIGH QLD 4207

beenleigh.ljhooker.com.au | bso@ljhbeenleigh.com.au



**LJ Hooker Beenleigh
(07) 3807 7900**

Disclaimer: All information contained therein is gathered from relevant third parties sources. We cannot guarantee or give any warranty about the information provided. Interested parties must rely solely on their own enquiries.



- 1 | EAGLEBY SHOPPING CENTRE
 2 | EAGLEBY STATE SCHOOL
 3 | EAGLEBY SOUTH STATE SCHOOL
 4 | BEENLEIGH STATE HIGH SCHOOL
 5 | BEENLEIGH MARKETPLACE

11/147-153 FRYAR ROAD, EAGLEBY

3 2 1

Internal: 124m² | External: 3m² | Total: 127m²

Whilst every attempt has been made to ensure the accuracy of the floor plan contained here, measurements of doors, windows, rooms and any other item are approximate and no responsibility is taken for any error, omission, or misstatement. This plan is for illustrative purposes only and should only be used as such by any prospective purchaser.

