

10/202-206 Fryar Road, Eagleby

3 2 2

A Home That Feels Like More - Space, Comfort & Style in the Heart of Eagleby

Benjamin Waite and Eileen Chen, along with the team at LJ Hooker Beenleigh, are proud to present this beautiful family townhouse in one of Eagleby's most sought-after complexes - where comfort, community, and convenience all come together.

Tucked away in a private laneway, this residence enjoys a sense of space and security that's hard to find. From its freshly painted interiors to the thoughtfully upgraded finishes, every detail here has been considered with quality and care.

Step inside and feel immediately at home. The open-plan living area welcomes you with bright natural light, neutral tones, and the calming flow that modern living deserves. The kitchen, freshly painted and styled for everyday function, overlooks the living and dining zones - ideal for casual family meals or entertaining with ease.

The private courtyard is a standout - one of the largest gardens in the complex, complete with lush greenery and extra room for kids, pets, or even your own veggie patch. Whether it's morning coffee under the

FOR SALE

Please Call

AGENTS

Benjamin Waite

0431 265 700

sales1@ljhbeenleigh.com.au

Eileen Chen

0452 352 547

eileen.chen@ljhbeenleigh.com.au

AGENCY

LJ Hooker Beenleigh

(07) 3807 7900

All information contained therein is gathered from relevant third parties sources.

We cannot guarantee or give any warranty about the information provided.

Interested parties must rely solely on their own enquiries.

LJ Hooker

sun or weekend barbecues with friends, this is your peaceful escape at home.

Upstairs, three generous bedrooms offer space for everyone. The master suite features an ensuite with upgraded fixtures and a walk-in robe, while both bathrooms include brand-new shower sets and heater lamps - a thoughtful touch of comfort for cooler mornings. Two split-system air conditioners ensure year-round climate control, and suction fans have been installed in key areas for improved ventilation.

It's the kind of home that balances practicality and lifestyle - easy to maintain yet rich in comfort and charm.

Property Highlights:

- End-position townhouse with in open laneway - enhanced privacy
- Freshly painted throughout with premium-quality paint
- Upgraded bathrooms with new shower sets and heater lamps
- Two air-conditioning units for zoned comfort
- Larger-than-average garden courtyard for entertaining and relaxation
- Suction fans added in bathrooms and laundry areas
- Lock-up garage with internal access
- Downstairs powder room for guests
- Security screens and ample storage throughout

• Location & Lifestyle

Eagleby is one of Logan's most dynamic and family-friendly suburbs - perfectly positioned between Brisbane and the Gold Coast. You'll be moments from local schools, shops, and transport, all while enjoying a strong sense of community and green open spaces.

Here, you're not just buying a home - you're joining a well-kept complex where pride of ownership is clear and the lifestyle is easy.

Rental Appraisal: \$600-\$625 per week
Council Rates: Approx. \$900-\$1,000 per quarter
Body Corporate: Approx. \$1,100 per quarter

Whether you're a first-home buyer looking for a smart start, a downsizer chasing comfort without compromise, or a family seeking space and lifestyle - this townhouse delivers on every level.

Don't miss your chance to secure one of the best positions in the complex.

Contact Benjamin Waite on 0431 265 700 or Eileen Chen on 0452 352 547 today to make it yours.

Important: While every care has been taken in the preparation of the information contained in this marketing, LJ Hooker Beenleigh will not be held responsible for any errors or omissions. All details are considered accurate at the time of printing, and interested parties should make and rely on their own enquiries to verify the information.

Disclaimer: Please note that some of the images included in this marketing have been virtually staged to help illustrate the property's potential and demonstrate how spaces may look when furnished. These images are provided for visualisation purposes only and may not represent the property in its current condition.

MORE DETAILS

Property ID 1X4NGRF
Property Type Townhouse
House Size 104 m2
Land Area 176 m2

Benjamin Waite 0431 265 700

Licensed Real Estate Agent | sales1@ljhbeenleigh.com.au

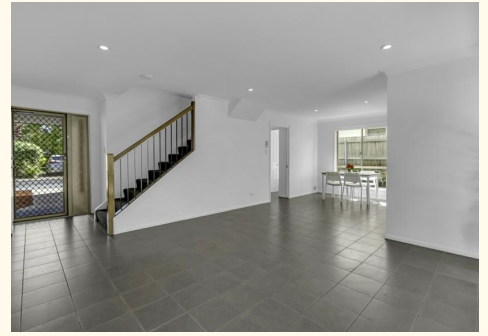
Eileen Chen 0452 352 547

Sales and Marketing Specialist | eileen.chen@ljhbeenleigh.com.au

LJ Hooker Beenleigh (07) 3807 7900

14-16 James Street, BEENLEIGH QLD 4207

beenleigh.ljhooker.com.au | bs0@ljhbeenleigh.com.au



All information contained therein is gathered from relevant third parties sources.
We cannot guarantee or give any warranty about the information provided.
Interested parties must rely solely on their own enquiries.