



29 Sunscape Drive, Eagleby

SOLD by Eileen Chen and Benjamin Waite

Successfully marketed and sold by Eileen Chen and Benjamin Waite-Eagleby Specialists of LJ Hooker

Campaign Snapshot:

- Method of Sale: Private Treaty
- Inspection Attendees: 16
- Enquiries: 24
- Written Offers: 3
- Sold after first open home

Eileen Chen and Benjamin Waite along with the team at LJ Hooker Beenleigh are proud to present 29 Sunscape Drive Eagleby - a stylish retreat that brings comfort, functionality and entertaining to the forefront. Perfectly positioned in a peaceful pocket of Eagleby, this welcoming home is ideal for first home buyers, young families or savvy investors ready to capitalise on value and lifestyle.

Step inside and feel instantly at home with the bright and breezy interiors complemented by a family-friendly layout. The kitchen sits at the heart of the home, boasting sleek appliances, ample prep space and generous storage, making it a dream for any home cooks. With

3 1 2

FOR SALE

UNDER CONTRACT- CALL EILEEN & BEN

AGENTS

Eileen Chen
0452 352 547
eileen.chen@ljhbeenleigh.com.au

Benjamin Waite
0431 265 700
benjamin.waite@ljhbeenleigh.com.au

AGENCY

LJ Hooker Beenleigh
(07) 3807 7900

All information contained therein is gathered from relevant third parties sources. We cannot guarantee or give any warranty about the information provided. Interested parties must rely solely on their own enquiries.

LJ Hooker

an easy indoor-outdoor flow, your open-plan dining area spills effortlessly onto a covered alfresco space - perfect for relaxed weekend gatherings or quiet evenings under the stars. The fully fenced yard is an ideal play zone for kids and pets alike, offering both security and space.

Two air-conditioned bedrooms and ceiling fans throughout ensure year-round comfort. This home has all the essentials - and some delightful extras - wrapped in an inviting, low-fuss package.

Your New Property Features:

- 3 generously sized bedrooms, each with built-in robes
- Two bedrooms with air-conditioning plus ceiling fans throughout for year-round comfort
- Updated bathroom with large double shower
- Well-appointed kitchen featuring quality appliances and plenty of bench space
- Kitchen also features a raked ceiling
- Open-plan living and dining zones, designed for easy family living
- Covered alfresco entertaining area - entertain in any season!
- Fully fenced, secure backyard - perfect for pets and kids to play safely
- Solar system installed - reduce your energy bills and your footprint
- Lock-up carport + additional off-street car space
- Handy garden shed for extra storage
- Generous 627m²; block in a quiet, family-friendly street
- Peaceful owner-occupied street with a strong community
- No easements
- Drive-through carport to the backyard with dual side access

Your Investment Figures:

- Currently tenanted until 12/06/26 at \$500 per week
- Rental Appraisal: \$620- \$650 per week (approx.)
- Council Rates: Approx. \$950 per quarter
- No body corporate fees - just your own slice of suburban bliss!

Why Eagleby?

Eagleby is one of Logan's hidden gems, offering unbeatable convenience paired with a relaxed suburban vibe. Just minutes to local schools, shops, parks and public transport, the area is well connected while maintaining a sense of peace and community. With easy access to both Brisbane and the Gold Coast via the M1, it's no wonder more buyers and investors are turning their sights to this growth-friendly suburb.

With its practical layout, modern upgrades and excellent location, this property ticks all the boxes for low-maintenance living and reliable investment returns.

This one won't stick around long - homes with this much heart are in high demand. Whether you're buying to live or lease, 29 Sunscape Drive is a smart move in a smart location.

Contact Eileen and Benjamin today for more info. Register your interest and start the conversation about your next great investment - your future property starts here!

Important: While every care has been taken in the preparation of the information contained in this marketing, LJ Hooker Beenleigh and its representatives will not be held responsible for any errors or omissions. All details are considered accurate at the time of printing, and interested parties should make and rely on their own enquiries to verify the information.

MORE DETAILS

Property ID 1XE3GRF
Property Type House
Land Area 627 m2

Eileen Chen 0452 352 547

Sales and Marketing Specialist | eileen.chen@ljhbeenleigh.com.au

Benjamin Waite 0431 265 700

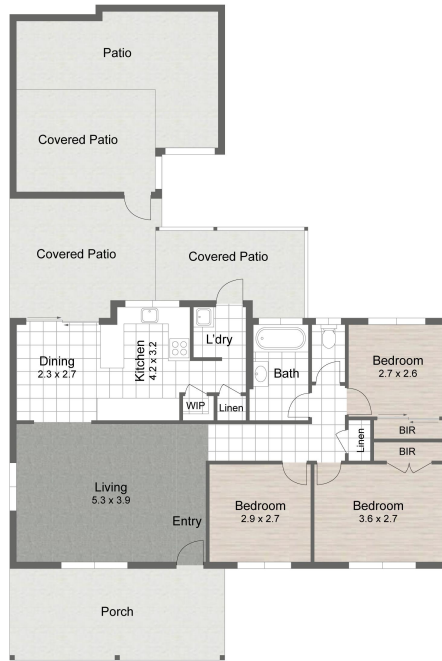
Principal & Licenced Real Estate Agent |
benjamin.waite@ljhbeenleigh.com.au

LJ Hooker Beenleigh (07) 3807 7900

14-16 James Street, BEENLEIGH QLD 4207
beenleigh.ljhooker.com.au | bso@ljhbeenleigh.com.au



All information contained therein is gathered from relevant third parties sources.
We cannot guarantee or give any warranty about the information provided.
Interested parties must rely solely on their own enquiries.



29 SUNSCAPE DRIVE, EAGLEBY

 **3**
 **1**
 **1**

93 m²
Internal
60 m²
External

153 m²
Total

EILEEN CHEN - 0452 352 547
BENJAMIN WAITE - 0431 265 700

Whilst every attempt has been made to ensure the accuracy of the floor plan contained here, measurements of doors, windows, rooms and any other item are approximate and no responsibility is taken for any error, omission, or misstatement. This plan is for illustrative purposes only and should only be used as such by any prospective purchaser.