



Eagleby, 223 Herses Road

Spacious Corner Charmer with Modern Comforts and Investment Appeal

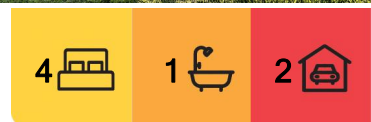
This beautifully presented 4-bedroom home on a generous 420m² corner block is the perfect blend of modern updates, low-maintenance living, and smart design. Boasting light-filled interiors, dual covered patios for entertaining, and secure fencing all around, this home delivers comfort, functionality, and lifestyle in equal measure. Whether you're looking to nest or invest, 223 Herses Road has all the essentials and then some.

Tucked into the heart of Eagleby, you're just minutes from everything—schools, shops, public transport, and green open spaces. This fast-growing suburb continues to shine for its affordability, family-friendly vibe, and unbeatable access to both Brisbane and the Gold Coast. It's a suburb where convenience meets opportunity, making it a hot spot for investors and homeowners alike.

Your New Property Features



Disclaimer: All information contained therein is gathered from relevant third parties sources. We cannot guarantee or give any warranty about the information provided. Interested parties must rely solely on their own enquiries.



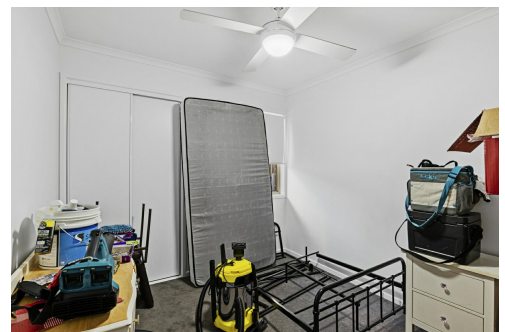
For Sale
\$679,000 - \$749,000

View
ljhooker.com.au/1WKKGRF

Contact
Benjamin Waite
0431 265 700
sales1@ljhbeenleigh.com.au

LJ Hooker Beenleigh
(07) 3807 7900

- Four well-sized bedrooms, each with ceiling fans and built-in wardrobes, offering ample space for families or tenants. The master bedroom includes a sliding glass door to the patio and a walk-in robe for that extra touch of privacy and practicality.
 - Sleek modern kitchen featuring crisp white cabinetry, stainless steel appliances such as a dishwasher, electric cooktop, and wraparound stone-look countertops with breakfast bar-perfect for casual meals or morning coffee.
 - Air-conditioned open-plan living and dining zone, tiled throughout for a fresh, easy-care finish. The space flows seamlessly to the rear covered patio, bringing indoor-outdoor living to life.
 - Dual covered patios-one front and one rear-ideal for alfresco dining, relaxing with friends, or enjoying the Queensland sunshine year-round.
- Updated bathroom with shower, bath, and modern finishes, conveniently located between bedrooms.
- Massive 7.8m x 6.7m double carport, providing covered parking and room for the ute, trailer or caravan.
 - Secure fully fenced yard with neat landscaping, lush green lawn, and room for pets or kids to play. The corner block adds privacy and space!
 - Separate laundry and garden shed for added functionality and storage.



Your Investment Figures

- Current Lease: Tenanted until end of September 2025-enjoy immediate rental income from day one. Currently returning \$580 per week, offering excellent yield and cash flow certainty.
- Rental Appraisal: Estimated at \$640-\$600 per week, confirming the strong value of the current rent.
- Council Rates: Approx. \$1,000 per quarter, keeping overheads manageable for investors or owner-occupiers.

If you've been searching for a home that combines lifestyle appeal with strong rental returns, 223 Horses Road ticks all the boxes. With fresh interiors, outdoor entertaining spaces, and a prime position in a high-growth suburb, this one won't last long. Reach out today to schedule a viewing or discuss how this property could be your next great investment!

More About this Property

Property ID	1WKKGRF
Property Type	House
House Size	183 m2
Land Area	420 m2
Including	Toilets (2)

Benjamin Waite 0431 265 700

Licenced Real Estate Agent | sales1@ljhbeenleigh.com.au

LJ Hooker Beenleigh (07) 3807 7900

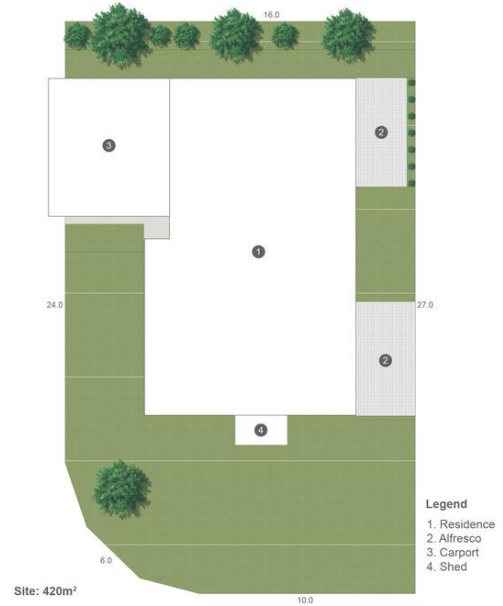
14-16 James Street, BEENLEIGH QLD 4207

beenleigh.ljhooker.com.au | bso@ljhbeenleigh.com.au



**LJ Hooker Beenleigh
(07) 3807 7900**

Disclaimer: All information contained therein is gathered from relevant third parties sources. We cannot guarantee or give any warranty about the information provided. Interested parties must rely solely on their own enquiries.



223 HERSES ROAD, EAGLEBY

4 1 2

Internal: 97m² | External: 86m² | Total: 183m²

Whilst every attempt has been made to ensure the accuracy of the floor plan contained here, measurements of doors, windows, rooms and any other item are approximate and no responsibility is taken for any error, omission, or misstatement. This plan is for illustrative purposes only and should only be used as such by any prospective purchaser.

