



## Eagleby, 16 Westray Court

Your Christmas Wish Granted - Expansive 1040m2 Block with Side Access & Shed!

Rarely does a block of this size come to market, let alone with the added bonuses of a shed and convenient side access for extra parking. Privately nestled and cherished by its original owner's since its construction in 2004, this home reflects 20 years of meticulous care and love. Now, it awaits its next chapter and new homeowners to make it their own picturesque retreat.

Step inside, and you'll be greeted by a spacious open-plan layout that seamlessly combines the lounge, dining, and kitchen areas. This design creates a welcoming atmosphere, perfect for entertaining family and friends or simply enjoying day-to-day living. The kitchen is at the heart of the home, offering functionality and flow, while the wet areas are thoughtfully positioned with convenient access to the outdoors, making daily life effortlessly practical.



**For Sale**  
CONTACT AGENT

**View**  
[ljhooker.com.au/1Y7SGWH](http://ljhooker.com.au/1Y7SGWH)

**Contact**  
**Nicole Hintz**  
0403 895 705  
[nhintz@ljhgc.com.au](mailto:nhintz@ljhgc.com.au)

**Liza Neuss**  
0447 006 098  
[liza@ljhgc.com.au](mailto:liza@ljhgc.com.au)

# LJ Hooker

**Disclaimer:** All information contained therein is gathered from relevant third parties sources. We cannot guarantee or give any warranty about the information provided. Interested parties must rely solely on their own enquiries.

**LJ Hooker Ormeau**  
**(07) 5549 4500**

This home boasts not one, but two generously sized master suites, each complete with walk-in robes for all your storage needs. These luxurious retreats provide comfort and privacy, ideal for parents, guests, or multi-generational living. A third double-sized bedroom adds to the appeal, offering versatility as a guest room, home office, or additional space for the family. Every aspect of this property has been carefully designed to maximize both space and comfort.

The expansive wrap-around verandah is a standout feature, providing weather-protected entertaining all year round. Whether you're hosting family gatherings or enjoying a quiet morning coffee, this space offers the perfect setting. With stunning garden views from every vantage point, the verandah invites relaxation and connection to the outdoors. The low-maintenance yard ensures you can spend more time enjoying your home and less time on upkeep, making it an idyllic retreat for years of entertaining and peaceful living.

- 1040m2 block with side access
- Double shed + double carport
- Extra long driveway perfect for extra parking
- 2 x master bedrooms with walk in robes
- The 3rd bedroom is the size of a master bedroom also
- Solar Electricity & Gas Hot Water System
- Freestanding 900mm Gas Cooktop electric stove
- New air con in living area & 1 x bedroom. Ceiling Fans throughout
- Wrap around verandahs
- Cottage Garden + Fruit Trees



## More About this Property

<b>Property ID</b>	1Y7SGWH
<b>Property Type</b>	House
<b>Land Area</b>	1040 m <sup>2</sup>
<b>Including</b>	Air Conditioning Outdoor Entertaining Built-in-Robes Solar Panels

### Nicole Hintz 0403 895 705

Director | L.R.E.A | Independent Contractor | [nhintz@ljhgc.com.au](mailto:nhintz@ljhgc.com.au)

### Liza Neuss 0447 006 098

Sales Associate to Nicole Hintz Independent Contractor | [liza@ljhgc.com.au](mailto:liza@ljhgc.com.au)

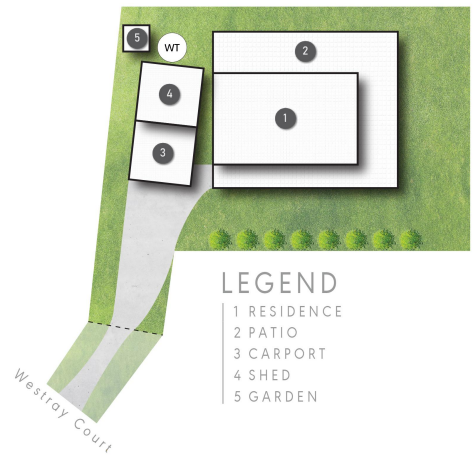
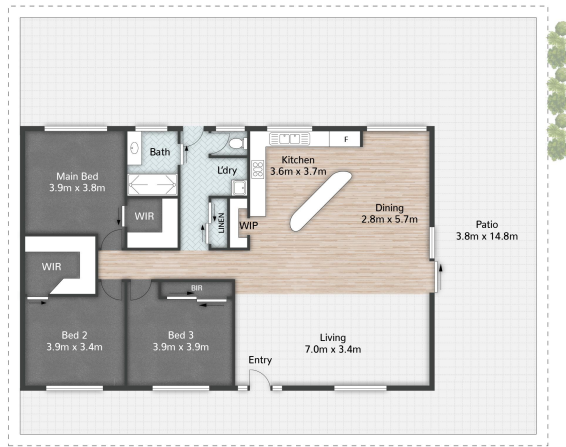
### LJ Hooker Ormeau (07) 5549 4500

Unit 10 Norfolk Village Shopping Ctr, 170-174 Pascoe Road, ORMEAU QLD 4208  
[ormeau.ljhooker.com.au](http://ormeau.ljhooker.com.au) | [ormeau@ljhgc.com.au](mailto:ormeau@ljhgc.com.au)



**Disclaimer:** All information contained therein is gathered from relevant third parties sources. We cannot guarantee or give any warranty about the information provided. Interested parties must rely solely on their own enquiries.

**LJ Hooker Ormeau  
(07) 5549 4500**



- LEGEND**
- 1 RESIDENCE
  - 2 PATIO
  - 3 CARPORT
  - 4 SHED
  - 5 GARDEN



16 Westray Court **EAGLEBY**

3 | 1 | 4 | 276m<sup>2</sup>



All dimensions are approximate; they are subject to errors and inaccuracies and no liability will be accepted. Plans are shown for marketing purposes only.