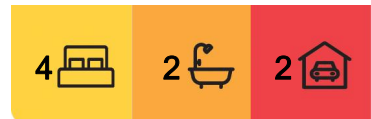


## Eagle Point, House 2/157 Bay Road

### MODERN HOME WITH JETTY BERTH

This lovely home is situated in a waterfront complex and is being sold with a jetty berth . Boasts two levels of living, downstairs offers open plan living with access to the entertaining deck, kitchen with wall oven and dishwasher. Master bedroom with walk-in robe and ensuite. There are three further bedrooms upstairs, two of which open onto the balcony, family bathroom and study nook. Spacious double garage with direct access into the home and room for a van or boat. Access to the waterfront via a walkway. Currently let until 24.11.2025 at \$460 per week.



**For Sale**  
\$620,000

**View**  
By Appointment

**Contact**  
**Lorraine Edlington**  
0437 532 860  
ledlington.paynesville@ljhooker.com.au



**Disclaimer:** All information contained therein is gathered from relevant third parties sources. We cannot guarantee or give any warranty about the information provided. Interested parties must rely solely on their own enquiries.

**LJ Hooker Paynesville | Lakes  
Entrance | Metung  
(03) 5156 6166**

## More About this Property

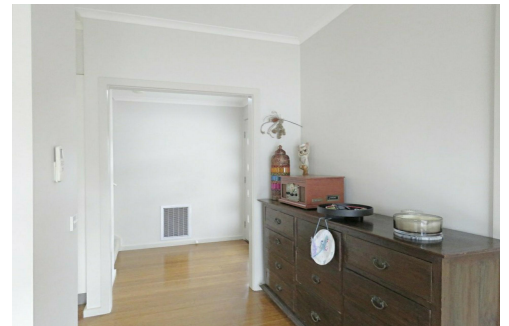
<b>Property ID</b>	5H8FCA
<b>Property Type</b>	Townhouse
<b>Land Area</b>	363 m2
<b>Including</b>	Ensuite Study Air Conditioning Ducted Heating Deck Dishwasher Outdoor Entertaining Solar Hot Water

### Lorraine Edlington 0437 532 860

Officer In Effective Control | Licensed Estate Agent |  
ledlington.paynesville@ljhooker.com.au

### LJ Hooker Paynesville | Lakes Entrance | Metung (03) 5156 6166

25A Esplanade, PAYNESVILLE VIC 3880  
paynesville.ljhooker.com.au | paynesville@ljhooker.com.au



**Disclaimer:** All information contained therein is gathered from relevant third parties sources.  
We cannot guarantee or give any warranty about the information provided. Interested parties must rely solely on their own enquiries.

**LJ Hooker Paynesville | Lakes  
Entrance | Metung  
(03) 5156 6166**