



927 Paynesville Road, Eagle Point

DELIGHTFUL LIFESTYLE PROPERTY CLOSE TO THE GIPPSLAND LAKES

Set on a generous 7,171m² (approx.) allotment just minutes from the Gippsland Lakes, local school, golf and bowls clubs, this property offers the ultimate family lifestyle. Perfectly combining space, comfort and functionality, the home is ideal for those who value both indoor and outdoor living.

A formal entry with raised ceiling leads to the elegant lounge, while a separate home theatre/games room provides the perfect retreat for movie nights or entertaining. The light filled, open plan living area flows seamlessly to an oversized covered outdoor space - perfect for year round gatherings.

At the heart of the home is a stylish kitchen featuring a stone topped island bench, pantry and 900mm gas/electric stove, ensuring everyday cooking or entertaining is a breeze.

Accommodation comprises four bedrooms, including a master suite with double door entry, walk-in robe, ensuite with bath, shower, vanity and toilet, plus direct access to its own private covered outdoor area. The remaining three bedrooms all feature built-in robes and share a well appointed family bathroom.

Practical features include internal access to the double garage,

4 🚗 2 🛏 14 🚗

FOR SALE
\$870,000 - \$890,000

AGENTS

Lorraine Edlington
0437 532 860
ledlington.paynesville@ljhooker.com.au

AGENCY

LJ Hooker Paynesville | Lakes Entrance
| Metung
(03) 5156 6166

All information contained therein is gathered from relevant third parties sources.
We cannot guarantee or give any warranty about the information provided.
Interested parties must rely solely on their own enquiries.

 **LJ Hooker**

ducted gas heating and split system heating/cooling, ducted vacuum system, double glazed windows, earthy neutral tones throughout and a solar panel system for energy efficiency. Completing this exceptional lifestyle package is a massive 21.6m x 9m Colorbond shed and water tank perfect for trades, hobbies or storing boats and caravans. Located only 10 minutes' drive to Bairnsdale and 5 minutes to Paynesville, this property delivers a rare opportunity to secure space, style and convenience close to the Gippsland Lakes.

MORE DETAILS

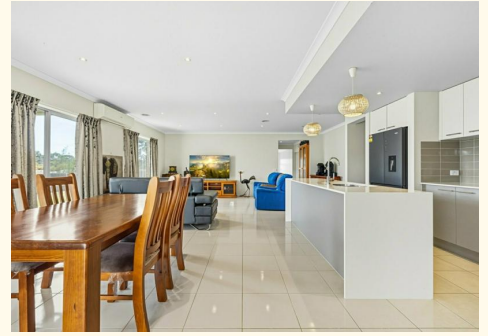
Property ID	MM2FCA
Property Type	House
House Size	326 m2
Land Area	7212 m2
Including	Ensuite
	Air Conditioning
	Ducted Heating
	Toilets (2)
	Spa
	Dishwasher
	Outdoor Entertaining
	Built-in-Robes
	Fully Fenced
	Remote Garage
	Solar Panels
	Solar Hot Water

Lorraine Edlington 0437 532 860

Officer In Effective Control | Licensed Estate Agent |
ledlington.paynesville@ljhooker.com.au

LJ Hooker Paynesville | Lakes Entrance | Metung (03) 5156 6166

25A Esplanade, PAYNESVILLE VIC 3880
paynesville.ljhooker.com.au | paynesville@ljhooker.com.au





FLOOR PLAN

Disclaimer: Whilst every attempt has been made to ensure the accuracy of this floorplan, measurements or doors, windows, rooms and any other items are approximate only. The producer or the agent cannot be held responsible for any errors, omissions or misstatements. This plan is for illustrative purposes only and should be used as such.

927 Paynesville Road, Eagle Point