

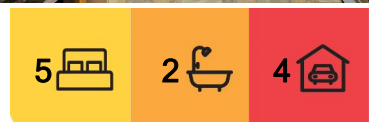


Eagle Point, 90 Rivermouth Road

ULTIMATE LAKESIDE LIFESTYLE ON 5 ACRES

Wake up each day to the serenity of expansive lake views, with over 100 meters of pristine waterfront right at your doorstep. This exceptional 5 acre property presents the ultimate lifestyle for water sports enthusiasts or those dreaming of a hobby farm with space for animals. Marvel at the stunning sunrises and the enchanting moonlit reflections over the lake and delight in the abundance of birdlife around you. Enjoy leisurely strolls along the water's edge to the new Eagle Point Hub, where you can relax over coffee.

The five bedroom home includes kitchen with a walk in pantry and an adjoining meals area that flows seamlessly to the covered outdoor space, complete with a BBQ and pizza oven. The lounge and dining area, with floor to ceiling windows, offers uninterrupted lake views and opens to a front verandah, inviting the beauty of the outdoors in. The master bedroom also enjoys breath taking lake views and the home is complete with two bathrooms. Outside, there's a cosy studio perfect for guest accommodation, ample shedding and a solar panel system with battery. Located just minutes from the iconic Silt Jetties, a short 5 minute drive to Paynesville and only 10 minutes to Bairnsdale, this property is close to



For Sale
Please Call

View
ljhooker.com.au/M9QFCA

Contact
Lorraine Edlington
0437 532 860
ledlington.paynesville@ljhooker.com.au



Disclaimer: All information contained therein is gathered from relevant third parties sources. We cannot guarantee or give any warranty about the information provided. Interested parties must rely solely on their own enquiries.

LJ Hooker Paynesville | Lakes Entrance | Metung
(03) 5156 6166

everything, including a golf and bowls club and a nearby boat ramp.

More About this Property

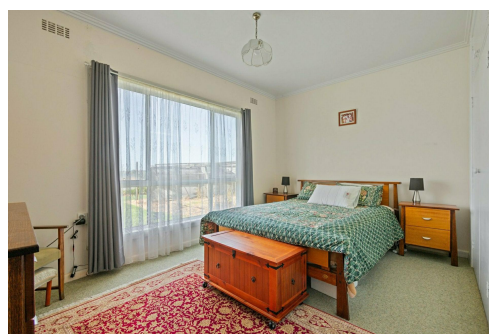
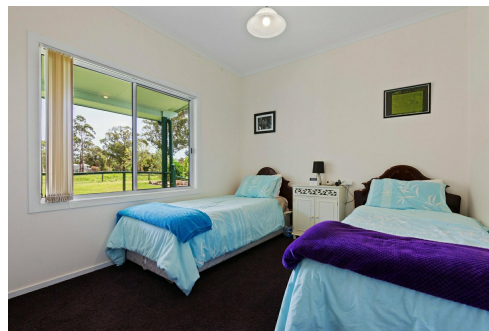
Property ID	M9QFCA
Property Type	House
Land Area	5 acre
Including	Air Conditioning Toilets (2) Outdoor Entertaining Built-in-Robes Solar Panels

Lorraine Edlington 0437 532 860

Officer In Effective Control | Licensed Estate Agent |
ledlington.paynesville@ljhooker.com.au

LJ Hooker Paynesville | Lakes Entrance | Metung (03) 5156 6166

25A Esplanade, PAYNESVILLE VIC 3880
paynesville.ljhooker.com.au | paynesville@ljhooker.com.au



Disclaimer: All information contained therein is gathered from relevant third parties sources.
We cannot guarantee or give any warranty about the information provided. Interested parties must rely solely on their own enquiries.

**LJ Hooker Paynesville | Lakes
Entrance | Metung
(03) 5156 6166**