

Eagle Point, 8 Seagreen Close

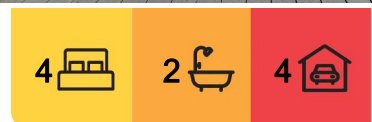
CHARMING STORYBOOK HOME IN PRESTIGIOUS WATERFRONT ESTATE

Nestled in a sought after estate just meters from the waterfront, this enchanting storybook home exudes charm, character and a timeless Hampton aesthetic. Boasting two levels of thoughtfully designed living, this property is a true delight.

Downstairs, the spacious open plan living room has a wood heater that sets the mood for those cosy winter nights, complemented by split system heating and cooling for year round comfort. This flows seamlessly via bi-fold doors to a covered, alfresco outdoor entertaining area, equipped with sun blinds and a ceiling fan.

The heart of the home, the kitchen, features stone benchtops with butler sinks and designer tapware, an integrated dishwasher, Belling 900mm oven, pendant lights and a walk in pantry, all framed by high ceilings and stunning hybrid timber flooring. Two bedrooms with built in robes and a stylish family bathroom with a large shower complete this level.

Ascending the elegant mountain ash staircase, the upper level reveals two additional



For Sale
Please Call

View
ljhooker.com.au/MCCFCA

Contact
Lorraine Edlington
0437 532 860
ledlington.paynesville@ljhooker.com.au



Disclaimer: All information contained therein is gathered from relevant third parties sources. We cannot guarantee or give any warranty about the information provided. Interested parties must rely solely on their own enquiries.

LJ Hooker Paynesville | Lakes Entrance | Metung
(03) 5156 6166

bedrooms, including the master suite with split system heating/cooling, a luxurious ensuite with a freestanding claw bath with heritage tapware an oversized shower and walk-in robe. Quality wool carpets add a touch of luxury. The French doors open onto a scenic balcony where you can enjoy lake vistas.

The house has double glazed windows throughout that are fitted with plantation shutters and blinds. The bedrooms and living areas are all fitted with ceiling fans.

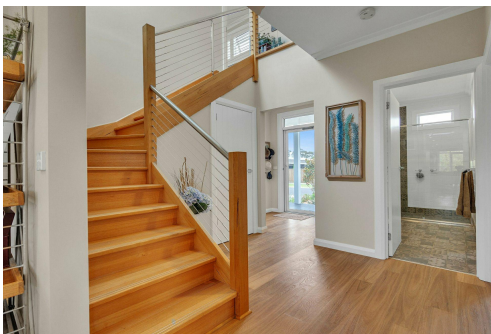
Outside, enjoy a double garage with rear roller door providing access to the rear yard and an 8m x 10m Colorbond double door garage that has ample room for a caravan and a boat. The outdoor entertaining areas are all constructed with Eco Deck for a hassle free maintenance. 5 star energy rating, 16 solar panels, vegetable plot, garden shed, water tank with pump and beautifully landscaped gardens. This impeccably maintained home is the epitome of charm and character.

More About this Property

Property ID	MCCFCA
Property Type	House
House Size	268.5 m ²
Land Area	792 m ²
Including	Ensuite Air Conditioning Toilets (2) Outdoor Entertaining Built-in-Robes Fully Fenced Remote Garage Solar Panels Water Tank

Lorraine Edlington 0437 532 860
Officer In Effective Control | Licensed Estate Agent |
ledlington.paynesville@ljhooker.com.au

LJ Hooker Paynesville | Lakes Entrance | Metung (03) 5156 6166
25A Esplanade, PAYNESVILLE VIC 3880
paynesville.ljhooker.com.au | paynesville@ljhooker.com.au

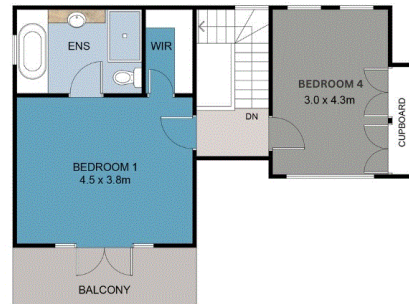


Disclaimer: All information contained therein is gathered from relevant third parties sources. We cannot guarantee or give any warranty about the information provided. Interested parties must rely solely on their own enquiries.

**LJ Hooker Paynesville | Lakes
Entrance | Metung
(03) 5156 6166**



GROUND FLOOR PLAN



UPPER FLOOR PLAN

Disclaimer: Whilst every attempt has been made to ensure the accuracy of this floorplan, measurements or doors, windows, rooms and any other items are approximate only. The producer or the agent cannot be held responsible for any errors, omissions or misstatements. This plan is for illustrative purposes only and should be used as such.

8 Seagreen Close, Eagle Point