

Eagle Point, 176 Bay Road

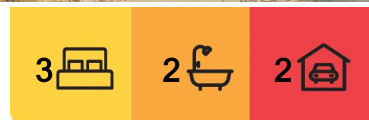
STYLISH HOME WITH UNINTERRUPTED LAKE VIEWS

Perched on the elevated side of the street boasting amazing lake vistas, this modern home offers a rare blend of luxury and comfort. Designed to maximize its spectacular surroundings, this home boasts an expansive open plan living area where panoramic water views take centre stage.

At the heart of the home, the entertainer's kitchen impresses with sleek stone benchtops, a spacious walk-in pantry and premium finishes, making it a dream space for cooking and hosting. Beautiful floorboards flow throughout the open plan living area, enhancing the warmth and sophistication of the home.

Outside, a covered alfresco area extends the living space, offering the perfect setting for year round outdoor gatherings. The landscaped back garden provides additional space for relaxation and enjoyment.

The master suite also opens to the deck where you can soak in the tranquil beauty of the lake - an idyllic setting for morning coffee or sunset entertaining. The pristine master bedroom features a generous walk-in robe and a stylish ensuite, creating a peaceful



For Sale
\$1,030,000 - \$1,060,000

View
By Appointment

Contact
Lorraine Edlington
0437 532 860
ledlington.paynesville@ljhooker.com.au



Disclaimer: All information contained therein is gathered from relevant third parties sources. We cannot guarantee or give any warranty about the information provided. Interested parties must rely solely on their own enquiries.

LJ Hooker Paynesville | Lakes Entrance | Metung
(03) 5156 6166

retreat.

Two additional well appointed bedrooms provide comfortable accommodation for family or guests, serviced by a sleek central bathroom. Practicality meets style with a double garage, complete with extra storage to accommodate all your needs.

More About this Property

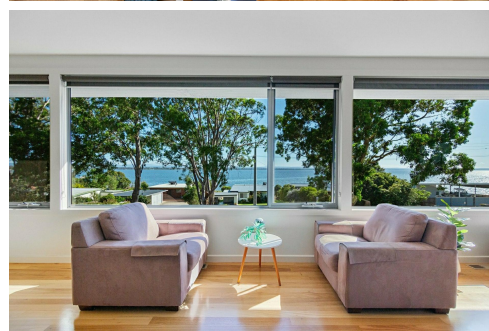
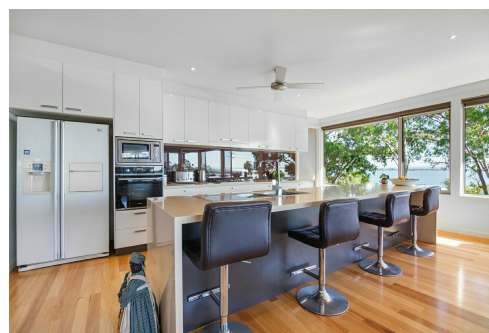
Property ID	ME8FCA
Property Type	House
House Size	277 m2
Land Area	900 m2
Including	Ensuite Air Conditioning Ducted Heating Toilets (2) Balcony Deck Dishwasher Outdoor Entertaining Floorboards Built-in-Robes Secure Parking Remote Garage Solar Hot Water

Lorraine Edlington 0437 532 860

Officer In Effective Control | Licensed Estate Agent |
ledlington.paynesville@ljhooker.com.au

LJ Hooker Paynesville | Lakes Entrance | Metung (03) 5156 6166

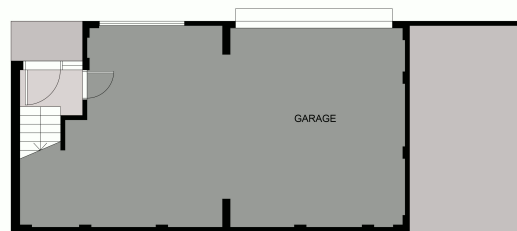
25A Esplanade, PAYNESVILLE VIC 3880
paynesville.ljhooker.com.au | paynesville@ljhooker.com.au



Disclaimer: All information contained therein is gathered from relevant third parties sources.

We cannot guarantee or give any warranty about the information provided. Interested parties must rely solely on their own enquiries.

**LJ Hooker Paynesville | Lakes
Entrance | Metung
(03) 5156 6166**



FLOOR PLAN

176 Bay Road, Eagle Point

Disclaimer: Whilst every attempt has been made to ensure the accuracy of this floorplan, measurements or doors, windows, rooms and any other items are approximate only. The producer or the agent cannot be held responsible for any errors, omissions or misstatements. This plan is for illustrative purposes only and should be used as such.