

Eagle Point, 1308 Forge Creek Road

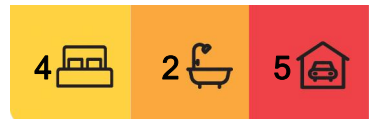
MODERN COMFORT ON LIFESTYLE ALLOTMENT

Set on a sprawling 4572sqm allotment near the Gippsland Lakes, this impressive 7 year old home seamlessly blends modern style with the beauty of its surroundings. The open plan living area, filled with natural light from its north facing aspect, flows effortlessly to a tiled, covered outdoor space overlooking landscaped gardens and a treed reserve teeming with birdlife and wildlife.

The chef's kitchen offers glass splashbacks, an island bench, a 900mm gas/electric stove, a dishwasher and a walk-in pantry. For movie enthusiasts, the theatre room with double door entry provides a private escape, while a separate wing includes three spacious bedrooms, a modern bathroom and an activity room.

The master bedroom, accessed through a formal entry hall, features a walk-in robe and ensuite, delivering a luxurious retreat. Additional conveniences include a dedicated study and a double garage with internal access, ensuring a well thought out layout.

Extras abound, with quality window furnishings, vinyl plank flooring, a 4.5kW solar panel system, a 10m x 10m barn style shed, a garden shed, a water tank, an orchard and raised



For Sale
\$925,000

View
ljhooker.com.au/MA8FCA

Contact
Lorraine Edlington
0437 532 860
ledlington.paynesville@ljhooker.com.au



Disclaimer: All information contained therein is gathered from relevant third parties sources. We cannot guarantee or give any warranty about the information provided. Interested parties must rely solely on their own enquiries.

LJ Hooker Paynesville | Lakes Entrance | Metung
(03) 5156 6166

vegetable beds.

Positioned close to the Eagle Point Hub, boat ramp, golf and bowls clubs and scenic walking tracks through the reserve, this home promises an idyllic lifestyle. Enjoy fishing, boating and swimming adventures daily, all while being a short drive from local amenities. Your tranquil retreat awaits!

More About this Property

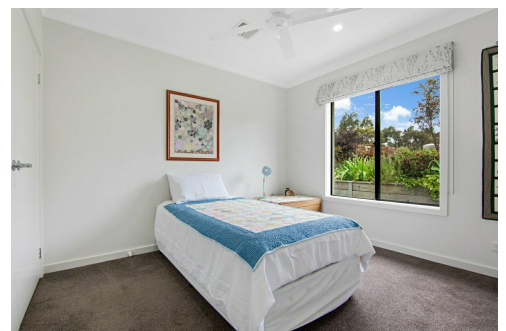
Property ID	MA8FCA
Property Type	House
House Size	294.77 m2
Land Area	4572 m2
Including	Study Ducted Cooling Ducted Heating Toilets (2) Dishwasher Outdoor Entertaining Built-in-Robes Fully Fenced Remote Garage Solar Panels Water Tank Solar Hot Water

Lorraine Edlington 0437 532 860

Officer In Effective Control | Licensed Estate Agent |
ledlington.paynesville@ljhooker.com.au

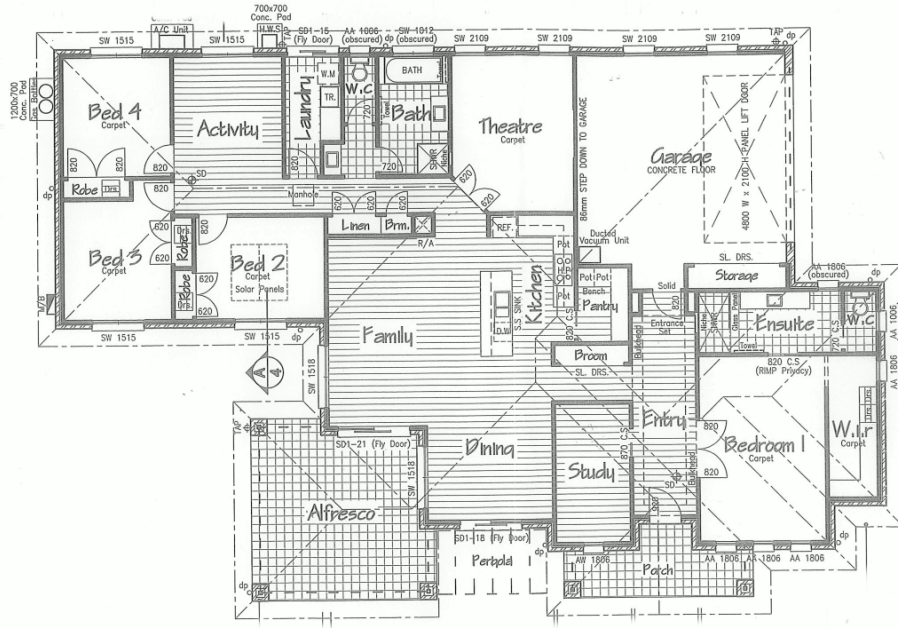
LJ Hooker Paynesville | Lakes Entrance | Metung (03) 5156 6166

25A Esplanade, PAYNESVILLE VIC 3880
paynesville.ljhooker.com.au | paynesville@ljhooker.com.au



Disclaimer: All information contained therein is gathered from relevant third parties sources. We cannot guarantee or give any warranty about the information provided. Interested parties must rely solely on their own enquiries.

LJ Hooker Paynesville | Lakes Entrance | Metung (03) 5156 6166



Disclaimer: Whilst every attempt has been made to ensure the accuracy of this floorplan, measurements or doors, windows, rooms and any other items are approximate only. The producer or the agent cannot be held responsible for any errors, omissions or misstatements. This plan is for illustrative purposes only and should be used as such.



LJ Hooker Paynesville | Lakes Entrance | Metung
 (03) 5156 6166

Disclaimer: All information contained therein is gathered from relevant third parties sources. We cannot guarantee or give any warranty about the information provided. Interested parties must rely solely on their own enquiries.