



Eagle Point, Unit 1 & 2/13 White Court

OUTSTANDING INVESTMENT - TWO UNITS ON
GENEROUS 1,362M2 ALLOTMENT (APPROX.)

- Two well maintained units on an expansive 1,362m2 (approx.) allotment
- Plenty of space for future development (STCA) - potential to build additional units
- Short walk to the waterfront, boat ramp, golf and bowls club, and public transport
- Currently leased to excellent tenants who wish to remain long term
- Returning \$34,060. per annum, with potential to increase rental income to match current market rates

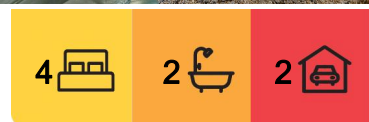
Each unit features:

- Open plan kitchen, dining, and living area with timber cathedral ceilings
- Two bedrooms with built-in robes
- Central bathroom and separate laundry
- Single carport for each unit

A rare opportunity to secure a dual income property with future development potential in a prime coastal location!



Disclaimer: All information contained therein is gathered from relevant third parties sources. We cannot guarantee or give any warranty about the information provided. Interested parties must rely solely on their own enquiries.



For Sale
\$565,000

View
By Appointment

Contact
Lorraine Edlington
0437 532 860
ledlington.paynesville@ljhooker.com.au

**LJ Hooker Paynesville | Lakes
Entrance | Metung
(03) 5156 6166**

More About this Property

Property ID	MFWFCA
Property Type	BlockOfUnits
Land Area	1362 m ²
Including	Air Conditioning Toilets (2)

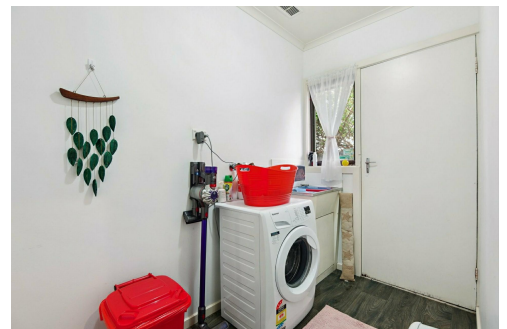
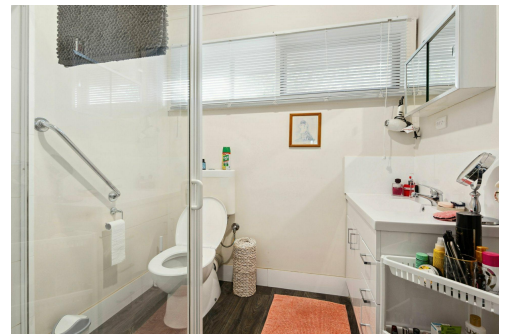
Lorraine Edlington 0437 532 860

Officer In Effective Control | Licensed Estate Agent |
ledlington.paynesville@ljhooker.com.au

LJ Hooker Paynesville | Lakes Entrance | Metung (03) 5156 6166

25A Esplanade, PAYNESVILLE VIC 3880

paynesville.ljhooker.com.au | paynesville@ljhooker.com.au



Disclaimer: All information contained therein is gathered from relevant third parties sources.
We cannot guarantee or give any warranty about the information provided. Interested parties must rely solely on their own enquiries.

**LJ Hooker Paynesville | Lakes
Entrance | Metung
(03) 5156 6166**