

## Durack, 20 Majestic Drive

Stunning design and impressive street presence.

\* Sold from our extensive data base prior to being advertised.

Architecturally inspired and positioned purposefully on a broad corner allotment this stunning example was the original display home of the area and no expense was spared during construction. Grand cathedral ceilings and banks of glass produce an opulent space immediately as you enter the home. The mezzanine above the living area gazes through the glass towards one of many lakes meandering through this master planned golf course estate.

Features include:

- \* Quality architectural design
- \* Cathedral ceilings for maximum grandeur
- \* Banks of glass to allow natural light to fill the space



**Disclaimer:** All information contained therein is gathered from relevant third parties sources. We cannot guarantee or give any warranty about the information provided. Interested parties must rely solely on their own enquiries.

**SOLD**

5

2

2

**For Sale**  
\$735,000

**View**  
[ljhooker.com.au/5DBQF2X](http://ljhooker.com.au/5DBQF2X)

**Contact**  
**Jennifer Wardell**  
0447 007 474  
[jwardell@ljhookerdarwin.com.au](mailto:jwardell@ljhookerdarwin.com.au)

**Robert Higgins**  
0418 184 754  
[rhiggins@ljhookerdarwin.com.au](mailto:rhiggins@ljhookerdarwin.com.au)

**LJ Hooker Darwin**  
**(08) 8924 0900**

- \* Private entertaining area with plunge pool.
- \* Convenient Durack location
- \* Close to lakes and Golf course
- \* Ex-Display home so quality is assured.
- \* Stunning street appeal

Durack is a premier Palmerston suburb which was master planned by Delfin and includes 9 Holes of the Palmerston Golf Club, lakes full of Barramundi as well as a school, childcare center and small commercial precinct. The area is fantastic for families and is a short commute into Darwin or 2 minutes by car into the Palmerston CBD. Properties in this suburb are highly sought after.

## More About this Property

<b>Property ID</b>	5DBQF2X
<b>Property Type</b>	House
<b>Land Area</b>	652 m2
<b>Including</b>	Dishwasher

### Jennifer Wardell 0447 007 474

Sales Representative | [jwardell@ljhookerdarwin.com.au](mailto:jwardell@ljhookerdarwin.com.au)

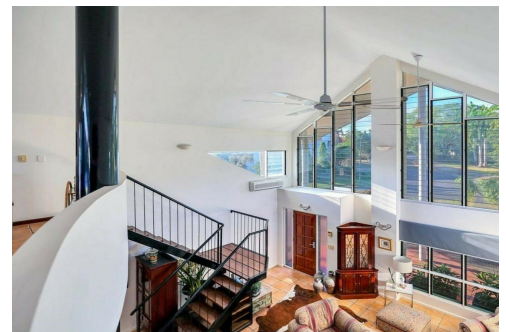
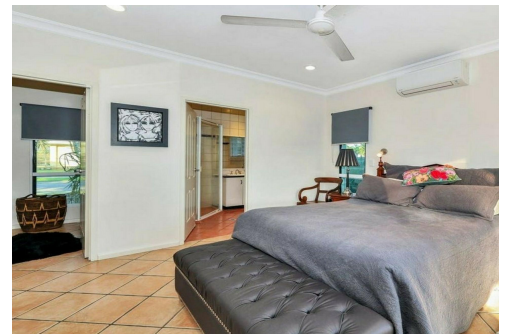
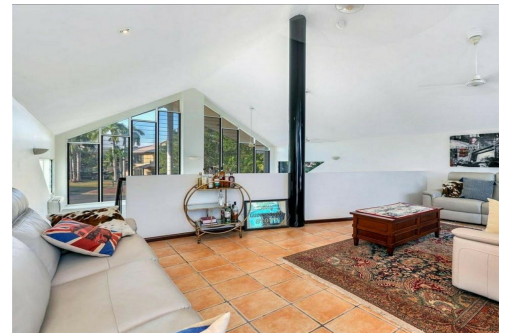
### Robert Higgins 0418 184 754

Project Planning and Marketing | [rhiggins@ljhookerdarwin.com.au](mailto:rhiggins@ljhookerdarwin.com.au)

### LJ Hooker Darwin (08) 8924 0900

Shop 1/25 Parap Road, PARAP NT 0820

[darwin.ljhooker.com.au](http://darwin.ljhooker.com.au) | [reception@ljhookerdarwin.com.au](mailto:reception@ljhookerdarwin.com.au)



**LJ Hooker Darwin**  
**(08) 8924 0900**

**Disclaimer:** All information contained therein is gathered from relevant third parties sources. We cannot guarantee or give any warranty about the information provided. Interested parties must rely solely on their own enquiries.