


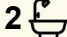
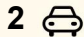


126 Naturaliste Terrace, Dunsborough

Elegant, Light-Filled Living in a Premier Dunsborough Location

Sheltered behind limestone garden borders and framed by lush, established greenery, this immaculate four-bedroom, two-bathroom residence offers a superbly private and refined living environment in one of Dunsborough's most desirable positions. From here, you're only a leisurely stroll to the town centre, café strip and local amenities - close enough for your morning coffee run or an easy walk home after an evening out. Directly opposite, Bushland Close provides an inviting pathway along the picturesque, tree-lined brook, leading you over the quaint bridge and straight to the Old Dunsborough foreshore and pristine swimming beaches.

Upon entering, the sense of space, natural light and warmth is immediately felt. Double feature doors create an elegant arrival, opening through to the expansive main living zone where the lounge, dining and kitchen come together effortlessly. A neutral palette, quality finishes and a considered open-plan design all contribute to the home's timeless appeal. From here, your outlook extends to the alfresco entertaining deck, a peaceful retreat overlooking beautifully maintained lawns and landscaping. This private outdoor haven has been carefully crafted to offer tranquillity while keeping you wonderfully connected to the heart of Dunsborough.

4  2  2 

FOR SALE
From \$1,900,000

AGENTS

Garry Morris
0417 964 823
garry.morris@ljhsouthwest.com.au

AGENCY

LJ Hooker Property South West WA
(08) 9791 6880

All information contained therein is gathered from relevant third parties sources.
We cannot guarantee or give any warranty about the information provided.
Interested parties must rely solely on their own enquiries.

 **LJ Hooker**

Property features include:

Double garage with remote door and convenient rear yard access

Spacious master suite with retreat area, ceiling fan, his and hers wardrobes and access to a private outdoor sitting space

Luxurious ensuite featuring a large oval spa bath, twin vanities, oversized shower with rain head and separate toilet

Three guest bedrooms

Solid timber flooring through the main living zones

Fully ducted reverse cycle air conditioning throughout the home - zoned to each room

Second living area perfect as a theatre, games room or private retreat

Stylish kitchen complete with Essastone benchtops, new cooktop & oven, dishwasher, double sink, abundant storage and elegant pendant lighting

Generous alfresco entertaining deck with space for both dining and lounging

Beautifully landscaped, yet low maintenance gardens framed by limestone walls

Powered Garden Shed

6.7kw system with Fronius Inverter Solar Panels (battery ready)

Serene water feature and outdoor shower (cold water)

A home of this calibre is a rare offering - equally suited to permanent residency or a luxurious lock and leave retreat in this highly sought-after beachside enclave. Meticulously maintained and move in ready, it allows you to embrace the very best of Dunsborough living from the moment you step inside.

Disclaimer - whilst every care has been taken in the preparation of this advertisement and the approximate outgoings, all information supplied by the seller and the sellers agent is provided in good faith. Prospective purchasers are encouraged to make their own enquiries to satisfy themselves on all pertinent matters. Images are for illustrative purposes.

MORE DETAILS

Property ID	195UHND
Property Type	House
House Size	223 m2
Land Area	724 m2
Including	Ensuite
	Ducted Cooling
	Ducted Heating
	Liveability

Garry Morris 0417 964 823

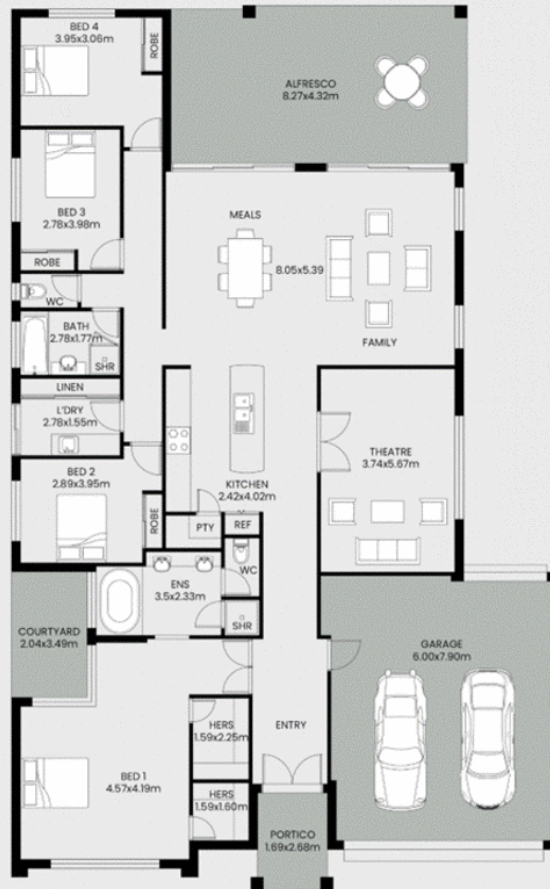
Licensed Sales Agent - Dunsborough |
garry.morris@ljhsouthwest.com.au

LJ Hooker Property South West WA (08) 9791 6880

130 Victoria Street, BUNBURY WA 6230
southwestwa.ljhooker.com.au | bunbury@ljhsouthwest.com.au



All information contained therein is gathered from relevant third parties sources.
We cannot guarantee or give any warranty about the information provided.
Interested parties must rely solely on their own enquiries.



This floor plan including furniture, fixture measurements and dimensions are approximate and for illustrative purposes only. BoxBrownie.com gives no guarantee, warranty or representation as to the accuracy and layout. All enquiries must be directed to the agent, vendor or party representing this floor plan.

