



352 Duns Creek Road, Duns Creek

Commanding Views & Tranquil Living!

Duns Creek delivers once again with this beautifully presented 3 bedroom to 4 bedroom home, set on a 10-acre holding locked & loaded with an amazing outlook and privacy that makes you exhale the moment you arrive. Sweeping south-facing views stretch across the valley, creating a genuine sense of escape - a world away from the everyday - yet still within comfortable reach of town conveniences. Whether it's a weekend sanctuary or somewhere to settle in for weeks on end, this is acreage designed to be enjoyed rather than endlessly maintained.

Freshly painted externally and wrapped by an expansive deck that captures the panorama from every angle, the home blends comfort with relaxed country charm. Inside, open-plan living is well sized, warm and inviting, with a light palate commercial flooring, a classic combustion fireplace to enjoy in the winter months & ducted air conditioning to keep you breezy cool in Summer. The recently updated kitchen is super impressive & sure to keep the home masterchef happy featuring a substantial island bench, abundant storage, and a generous double pantry.

There are 3 bedrooms on offer, with a spacious master with built-in

3 1 3

FOR SALE
\$1,200,000

AGENTS

Todd Fisher
0438 592 920
tfisher.maitland@ljhooker.com.au

Jack Fisher
0438 165 825
jfisher.maitland@ljhooker.com.au

AGENCY

LJ Hooker Maitland
(02) 4933 5511

All information contained therein is gathered from relevant third parties sources. We cannot guarantee or give any warranty about the information provided. Interested parties must rely solely on their own enquiries.



robe & two additional rear bedrooms with built-ins, and a versatile study, 4th bedroom or home office. There is also a family sized bathroom with separate toilet, plus a large laundry with second toilet. Efficiency and durability are enhanced by solar power, solar hot water, and low-maintenance Hardiplank and Colorbond construction.

The land itself is thoughtfully balanced, offering space and scenery without the burden of intensive upkeep. Established greenery and fruit trees frame the setting, and bolstered by a reliable water supply including two 22,000L tanks and an additional tank near the shed.

Completing the offering is the coveted "man cave", or music room - a fitted out shed with split-system air conditioning that provides the perfect creative retreat or hobby space.

Proudly marketed by LJ Hooker Maitland, please call exclusive agents Todd Fisher 0438 592 920 or Ben Cotton 0434 638 822 - 7 days for all inspections & further information.

All information contained herein is gathered from sources we deem to be reliable. However, we cannot guarantee its accuracy and interested persons should rely on their own enquiries.

MORE DETAILS

| | |
|---------------|--|
| Property ID | 1EY6F6H |
| Property Type | AcreageSemi-rural |
| Land Area | 10 acre |
| Including | Study Air Conditioning Toilets (2) Built-in-Robes Bush Retreat |

Todd Fisher 0438 592 920

Principal/Licensee in Charge | tfisher.maitland@ljhooker.com.au

Jack Fisher 0438 165 825

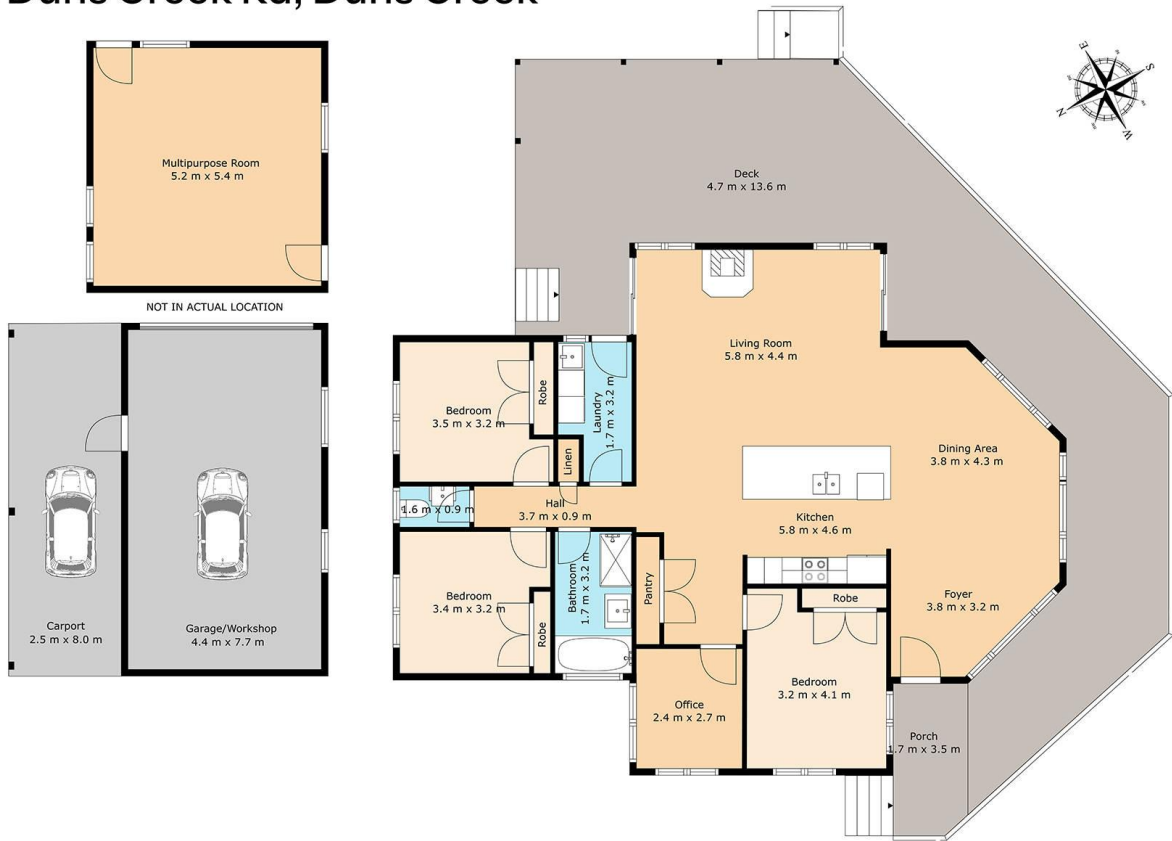
Sales Associate | jfisher.maitland@ljhooker.com.au

LJ Hooker Maitland (02) 4933 5511

24 Ken Tubman Drive, MAITLAND NSW 2320
maitland.ljhooker.com.au | maitland@ljhooker.com.au



352 Duns Creek Rd, Duns Creek



TOTAL: 160 m²

EXCLUDED AREAS: GARAGE/WORKSHOP: 34 m², CARPORT: 21 m², PORCH: 6 m², DECK: 80 m², WALLS: 15 m²



ALL SIZES, DIMENSIONS & ELEMENTS ARE APPROXIMATE & INTENDED FOR VIEWING PURPOSES ONLY
© 2026 Rite Angle Media - All rights reserved
www.riteanglemedia.com.au

LJ Hooker
Maitland

All information contained therein is gathered from relevant third parties sources.
We cannot guarantee or give any warranty about the information provided.
Interested parties must rely solely on their own enquiries.

LJ Hooker