



Dunlop, 10 Courtneidge Street

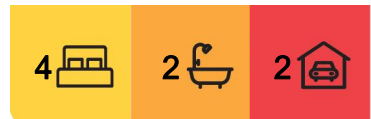
Family Life Made Easy

Elevated in position opposite the Dunlop Grasslands and taking in the views of the Brindabellas, this home offers plenty of space for comfortable family living.

There's room for everyone to spread out and enjoy, with both formal and informal living areas, a large dining space, and well-appointed kitchen with gas cooking and ample storage.

The large master bedroom is complete with a walk-in robe and ensuite, while three additional generous bedrooms all feature built-in robes. The main bathroom includes both a shower and bath, with the added convenience of a powder room and a separate laundry with linen storage.

Outside, the pergola and landscaped gardens create a private and lovely space for entertaining. The double garage with internal access provides secure parking, and the



For Sale
Auction

View
ljhooker.com.au/HNZV0F8H

Contact
George Vlandis
0437 398 774
gvlandis@ljhbelconnen.com.au
Joy Patel
0499 912 090
jpatel@ljhbelconnen.com.au

EER ★★★★★

LJ Hooker Belconnen
(02) 6251 1477



Disclaimer: All information contained therein is gathered from relevant third parties sources. We cannot guarantee or give any warranty about the information provided. Interested parties must rely solely on their own enquiries.

home is equipped with split system cooling, ducted gas heating, and evaporative cooling for year-round comfort.

Located close to schools, local shops, parks, and playgrounds, this home offers a wonderful blend of space, comfort, and convenience.

- * Elevated position opposite Dunlop Grasslands
- * Views to Brindabellas
- * Formal and informal living areas
- * Spacious meals and family room
- * Well-appointed kitchen with ample storage space
- * Large master bedroom with walk in robe and an ensuite
- * Additional three generous bedrooms with built in robe
- * Main bathroom with shower and bath
- * Laundry and linen storage
- * Powder room
- * Pergola and outdoor entertaining
- * Landscaped gardens with irrigation
- * Double garage with internal access
- * Split system, ducted gas heating and evaporative cooling
- * Conveniently located close to schools, local shops, parks and playgrounds

- * Build Year: 2004
- * Block Size: 519sqm
- * Living Size: 148sqm
- * Garage Size: 36sqm
- * EER: 4.5
- * Rates: \$2,525 p.a.
- * Land Tax: \$3,915 p.a. (investors only)
- * Unimproved Land Value: \$408,000

Disclaimer:

All information contained herein is gathered from external sources we consider to be reliable. However, we cannot guarantee or give any warranty about the information provided. Interested parties must solely rely on their own enquiries and satisfy themselves in all respects.

More About this Property

Property ID	HNZV0F8H
Property Type	House
House Size	148 m ²
Land Area	519 m ²
EER	4.5

George Vlandis 0437 398 774

Sales Agent | gvlendis@ljhbelconnen.com.au

Joy Patel 0499 912 090

Sales Agent | jpatel@ljhbelconnen.com.au

LJ Hooker Belconnen (02) 6251 1477

Shop 9, 21 Benjamin Way, BELCONNEN ACT 2617

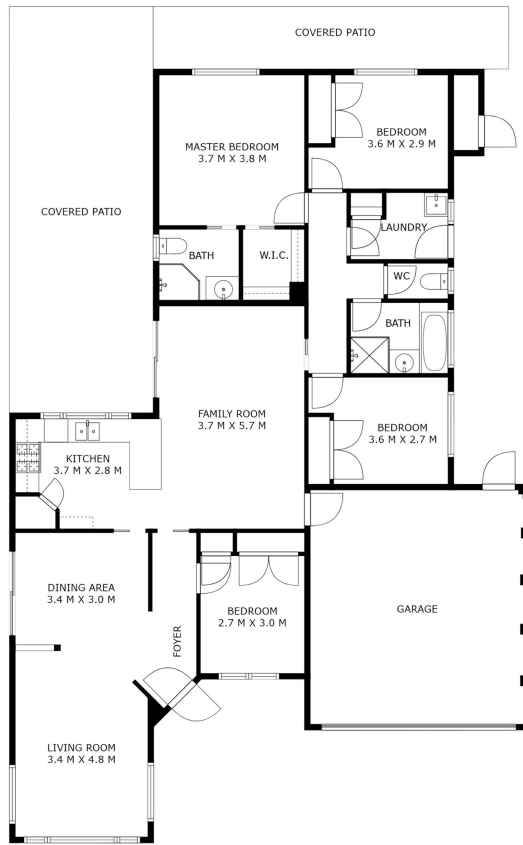
belconnen.ljhooker.com.au | belconnen@ljhbelconnen.com.au



Disclaimer: All information contained therein is gathered from relevant third parties sources.

We cannot guarantee or give any warranty about the information provided. Interested parties must rely solely on their own enquiries.

LJ Hooker Belconnen
(02) 6251 1477



10 Courtneidge Street, Dunlop



Disclaimer: Plans are indicative only and should be checked by the prospective purchaser. Plans shown are for presentation purposes and are not part of any legal document. All measurements and figures are approximate. The information herein is gathered from sources we believe to be reliable.

