

## Dundas Valley, 9 Carson Street

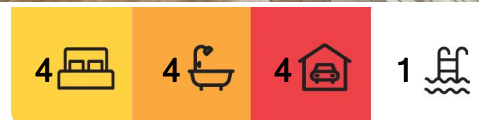
Unique Architect Designed Tri-level Entertainer, Complete with Guest Studio, Approx 948sqm

Strikingly unique in design and superbly crafted to the highest of standards by the builder as his own home, this near new architect designed full brick and concrete home on the border of Eastwood promises a contemporary lifestyle over a vast and highly versatile three level floor plan, complete with self-contained guest/in law accommodation. Perfectly placed on a parklike block of approx. 948sqm in a tightly held cul de sac, it boasts sun soaked interiors awash with handpicked finishes and sleek aesthetics. Combining glass, space and light to offer an effortless in/outdoor flow, it showcases multiple light filled living zones for every family member and a resort style yard with in-ground swimming pool to provide all season enjoyment. With a host of lifestyle facilities at your doorstep including Carlingford Court, Macquarie Centre, Top Ryde Shopping Centre, parks and city transport all just moments away.

\* Quality build, full brick and concrete slabs, commercial windows, unique design



**Disclaimer:** All information contained therein is gathered from relevant third parties sources. We cannot guarantee or give any warranty about the information provided. Interested parties must rely solely on their own enquiries.



**For Sale**  
By Negotiation

**View**  
By Appointment

**Contact**  
**David Pisano**  
0408 835 606  
david@ljhstrathfield.com.au

**LJ Hooker Strathfield**  
(02) 9746 2222



- \* Selection of multiple living zones on each level to accommodate all family members
- \* Sun filled open plan family/living with timber flooring, travertine feature wall/ fireplace
- \* Four generous sized bedrooms, three with ensuites, walk in robes, balcony access
- \* Versatile self-contained guest studio with own kitchen / bathroom, separate entry
- \* Chefs kitchen with huge feature island, custom cabinetry, gas cooking, dishwasher
- \* Four lavishly appointed bathrooms with premium finishes plus guest powder room
- \* Resort style yard with inground pool for all year entertaining, child friendly rear lawn
- \* Zoned ducted air-conditioning, high ceilings throughout, LED lighting, alarm system
- \* Automatic double garaging with internal access and additional off-street parking
- \* Land size approx. 948sqm with a leafy outlook, postcard like sunsets to the rear
- \* Within catchment for James Ruse/Macarthur Girls, walk to Kings/Tara school buses
- \* Short stroll to Eastwood shopping hub/village, train station and parklands

Cleverly designed and crafted with no detail overlooked and undoubtedly Dundas Valleys finest, this unique home will leave a lasting impression and must be inspected to be appreciated.

Inspect: As Advertised Or By Appointment  
 For Sale: By Negotiation  
 Details: David Pisano - 0408 835 606

## More About this Property

|               |   |
|---------------|---|
| Property ID   | TE6FAX  |
| Property Type | House   |
| Land Area     | 948 m2  |
| Including     | Study<br>Air Conditioning<br>Ducted Cooling<br>Alarm<br>Pool<br>Balcony<br>Deck<br>Dishwasher<br>Outdoor Entertaining<br>Floorboards<br>Built-in-Robes<br>Fully Fenced<br>Remote Garage |

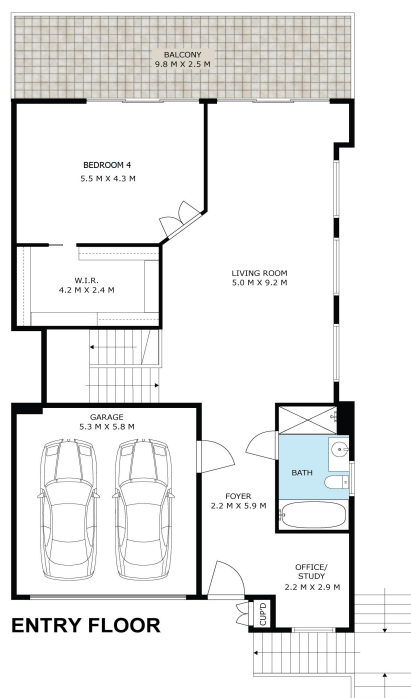
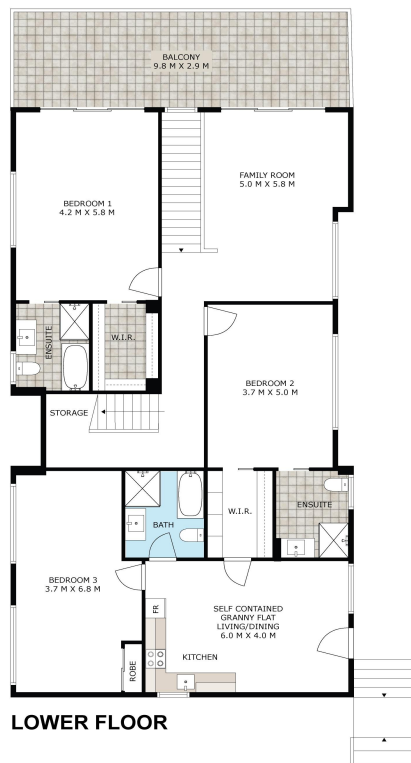
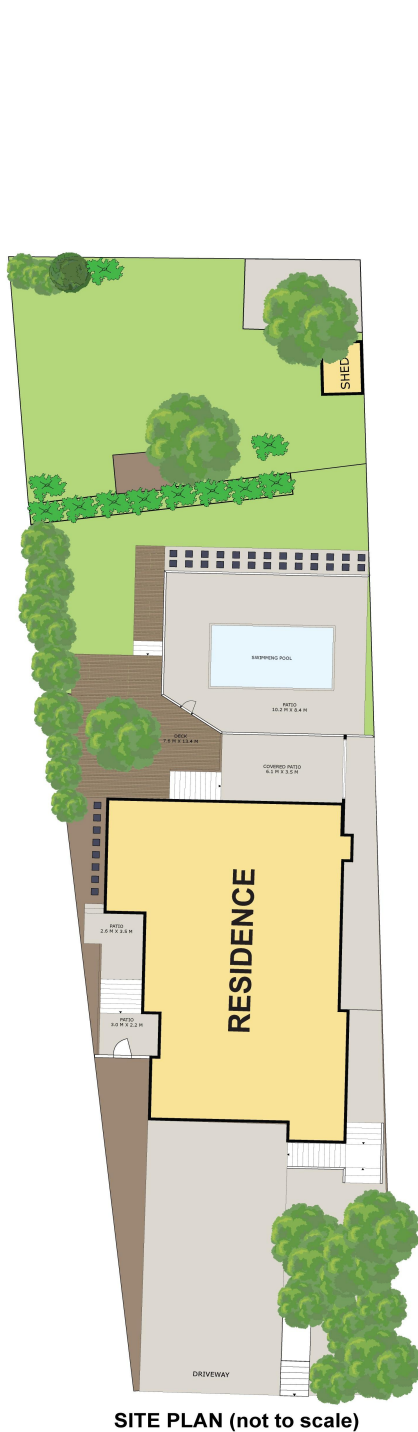
**David Pisano 0408 835 606**  
 Licensee In Charge | david@ljhstrathfield.com.au

**LJ Hooker Strathfield (02) 9746 2222**  
 2 Albert Road, STRATHFIELD NSW 2135  
 strathfield.ljhooker.com.au | info@ljhstrathfield.com.au



**Disclaimer:** All information contained therein is gathered from relevant third parties sources. We cannot guarantee or give any warranty about the information provided. Interested parties must rely solely on their own enquiries.

**LJ Hooker Strathfield**  
**(02) 9746 2222**



## 9 CARSON STREET, DUNDAS VALLEY

DISCLAIMER: WE HAVE OBTAINED ALL INFORMATION IN THIS DOCUMENT FROM SOURCES WE BELIEVE TO BE RELIABLE; HOWEVER, WE CANNOT GUARANTEE ITS ACCURACY. PROSPECTIVE PURCHASERS ARE ADVISED TO CARRY OUT THEIR OWN INVESTGATIONS